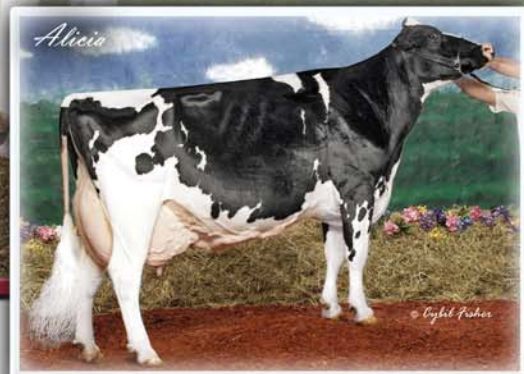
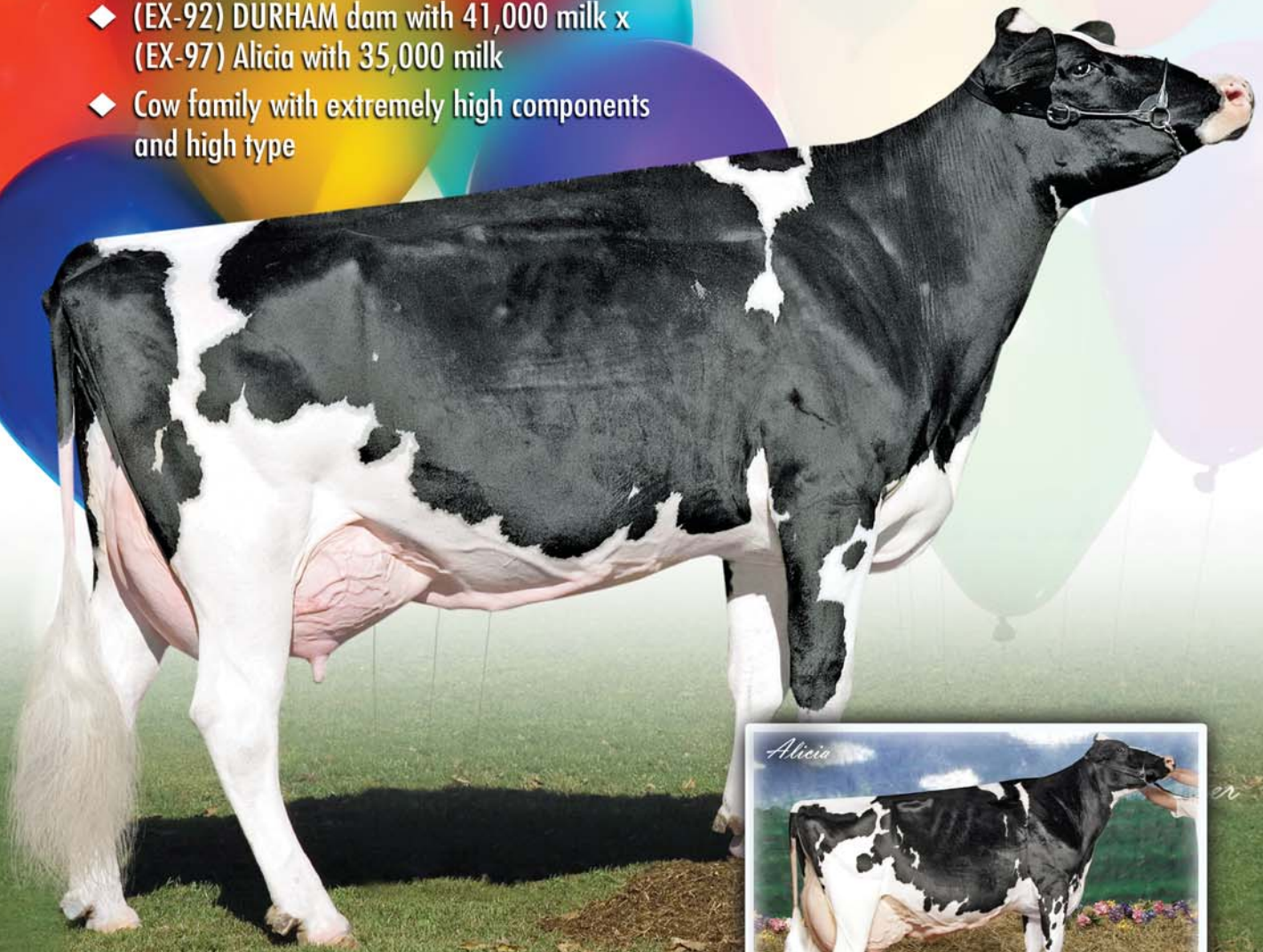


SURPRISE

7H09355 Jauquet-Lang SURPRISE ◆ aAa: 234 ◆ DMS: 234,345

- ◆ Shottle son from All-American heritage
- ◆ (EX-92) DURHAM dam with 41,000 milk x (EX-97) Alicia with 35,000 milk
- ◆ Cow family with extremely high components and high type



Sire: Picston Shottle-ET
Dam: BKB Amanda-ET (EX-92-EX-MS)
4-3 3x 365d 41,480M 5.0% 2,082F 3.1% 1,279P
MGS: Regancrest Elton DURHAM-ET (EX-90-GM)
MGD: Shoremar S Alicia-ET (EX-97-3E-EX-MS)
6-10 365d 35,760M 4.3% 1,541F 3.2% 1,147P
Twice All-American in milking form, 2001 & 2003



Phone: (614) 873-4683 ◆ Fax: (614) 873-5751 ◆ www.selectsires.com

SURPRISE semen qualifies for export to Canada. 08/07 Product of the USA.