

7HO9779 LARCREST CONCRETE-ET

USA 53452420 100%RHA-NA TR TV TL TD



Breeder:

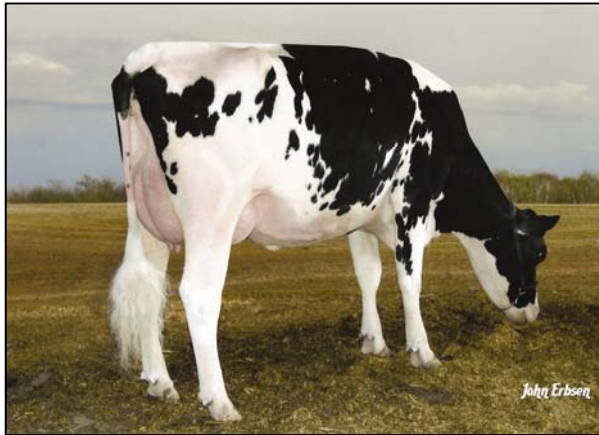
Jon E. Larson
Albert Lea, MN

Born: 02/26/2007
aAa: 432
DMS: 126,246

Parent Average:

+920M +48F +28P +345NM\$
+3.24T +2.46UDC +1748 TPI

- From the high PL Juror Chanel cow family
- Like his name implies, CONCRETE will sire rock-solid feet and legs
- High components throughout entire cow family
- Great PA Type for three generations



JENNY-LOU MARSHALL P149-ET TPI +1601
USA 122274798 100%RHA-NA TV TL
4-05 88 VEE+ 05/06/2001

PTA +1089M +23F +27P 92%R 4/2008
PTA +175NM -.06%F -.02%P 100%US
PTA -.3PL 3.02SCS -1.0DPR 6%DCE
PTA +3.43T +2.35UDC +1.97FLC 88%R 4/2008

LARCREST OSIDE CHAMPAGNE-TW CTPI +1895
USA 51449617 100%RHA-NA
3-01 87 VVVEV 05/29/2003

PTA +750M +73F +28P 52%R 4/2008
PTA +514NM +.17%F +.02%P
PTA +4.8PL 2.98SCS -.4DPR 9%DCE
PTA +3.05T +2.57UDC +2.28FLC 58%R 4/2008

AGE	X	DAYS	MILK	DCRM	%	FAT	%	PRT	DCRC	
*	2-03	2	305	24790	95	4.4	1100	3.2	804	95
			365	29105		4.5	1322	3.5	1022	

MARA-THON BW MARSHALL-ET TPI +1569M
USA 2290977 100%RHA-NA TV TL
5-04 86 VEV+ GM 1/08 03/24/1995
MACE YIELD EVALUATION
PTA +1764M +35F +39P 99%R 4/2008
PTA +224NM -.11%F -.05%P 96%US
PTA -.2PL 2.92SCS -2.1DPR 7%DCE
MACE TYPE EVALUATION
PTA +2.38T +1.70UDC +2.29FLC 99%R 4/2008

JENNY-LOU PATRON TOYANE CTPI +1419
USA 17313307 100%RHA-NA TR TL TD
6-06 89 VEEV GMD DOM 03/29/1997
PTA +533M +39F +19P 84%R 4/2008
PTA +190NM +.08%F +.01%P
PTA +.2PL 3.06SCS -.5DPR 9%DCE
PTA +1.82T +.86UDC +1.22FLC 81%R 4/2008

AGE	X	DAYS	MILK	DCRM	%	FAT	%	PRT	DCRC	
***	2-09	3	365	37830	97	4.0	1509	3.1	1186	96
***	4-05	3	365	45826	100	3.8	1749	3.1	1419	94
***	6-04	4	365	32260	102	4.3	1390	3.1	991	90
			LIFE	1704	160053		4.0	6329	3.2	5073

COMESTAR OUTSIDE-ET TPI +1611M
CAN 6026421 100%RHA-NA TV TL
GM 1/08 02/27/1994
MACE YIELD EVALUATION
PTA +521M +44F +2P 99%R 4/2008
PTA +351NM +.10%F -.05%P 17%US
PTA +5.1PL 2.94SCS +1.4DPR 9%DCE
MACE TYPE EVALUATION
PTA +2.08T +1.14UDC +1.55FLC 99%R 4/2008

LARCREST JUROR CHANEL CTPI +1718
USA 17184796 100%RHA-NA TV TL
9-06 93 EEEEE 3E GMD DOM 12/04/1996
PTA +798M +64F +36P 72%R 4/2008
PTA +384NM +.13%F +.05%P
PTA +2.2PL 3.11SCS -1.8DPR 9%DCE
PTA +2.48T +2.85UDC +1.03FLC 63%R 4/2008

AGE	X	DAYS	MILK	DCRM	%	FAT	%	PRT	DCRC	
*	2-03	2	305	17080	95	4.4	748	3.4	586	95
*	3-07	2	305	27980	95	4.3	1206	3.3	923	95
*	5-01	2	305	36390	95	4.2	1544	3.0	1089	95
*	6-05	2	305	33530	95	4.0	1347	3.3	1095	95
*	9-00	2	305	42610	94	4.1	1729	3.1	1331	94
			365	48460	94	4.0	1943	3.2	1556	94
			LIFE	2899	245420		4.310482	3.4	8403	

SIRE: KED JUROR-ET (GP-82-GM)
USA 2124357 100%RHA-NA TV TL TD