

7AY89 PALMYRA POKER RIGGINS-ET

USA 65459499



Breeder:

Evan Creek
Hagerstown, MD

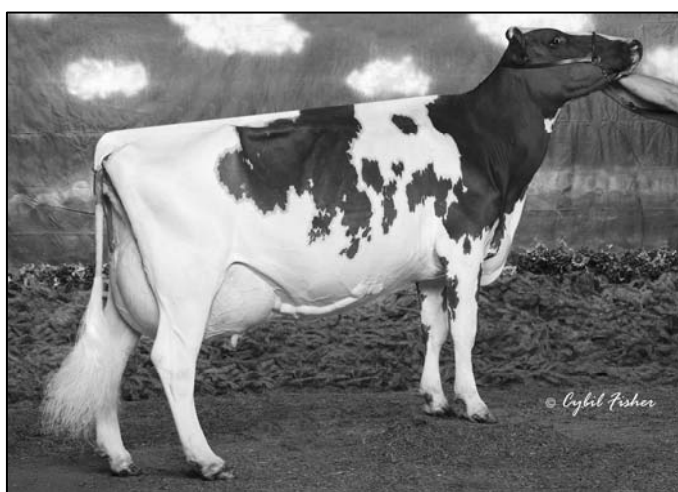
Born: 3/07/2008

Parent Average:

+788M +37F +23P +298NM\$
+1.1T +226PTI



- Designed for the colored shavings
- Dam is sister to the breed's best for type, 7AY77 RAMIUS
- Great production potential with fancy type
- Proven A.I. family with three Excellent dams



WOODLAND VIEW PARDNER-ET

811799C P- +143
 PTA +539M +30F +14P 97R
 PTA\$ +301NM 4/9
 PTA% +.05 +.01
 PTAT +.30T 94R 4/9

MARILIE B B POLKIE-ET

10014952C P- +81
 PTA +439M +26F +20P 66R
 PTA\$ +129NM 4/9
 PTA% +.05 +.03
 PTAT +.40T 31R 8/7

DHI	%	FAT	%	PRT
5-08 2 305	23042	3.9	891 3.4	780
8-05 2 305	27244	4.8	1318 3.3	886

DES CHAMOIS POKER-ET

8401621C P6 +198
 PTA +502M +35F +16P 81R
 PTA\$ +301NM 4/9
 PTA% +.09 +.00
 PTAT +1.6T 62R 4/9

COVEY-FARMS ROMEO-ET

100010086 P5 +143
 PTA +692M +15F +19P 92R
 PTA\$ +207NM 4/9
 PTA% -.06 -.01
 PTAT +1.40T 74R 4/9

PALMYRA ROMERO ROSY-ET

100334625 3-11 92 ELITE P9 +253
 PTA +1074M +39F +30P 60R
 PTA\$ +296NM 4/9
 PTA% -.01 -.02
 PTAT +1.80T 58R 4/9

GALNEY-EPC L.H. ROSY-ET

100110610 3-09 90 P9 +205
 PTA +812M +26F +18P 76R
 PTA\$ +237NM 4/9
 PTA% -.03 -.04
 PTAT +1.50T 76R 4/9

CLASS	ST9	SR8	BD8	DF7	RA5	RW8	LS7	FA6
	FU7	UH7	UW7	UC5	UD6	TP5	TL3	LR8
GOLD	% FAT % PRT							
2-03 2 305	21450	4.3	921	3.2	691			
	341	23860	4.2	1013	3.3	784		
3-04 2 305	25580	4.0	1015	3.0	759			
	350	28000	4.0	1121	3.0	844		

CLASS	ST9	SR7	BD8	DF7	RA6	RW8	LS6	FA7
	FU6	UH7	UW7	UC6	UD7	TP6	TL5	LR7
GOLD	% FAT % PRT							
2-00 2 305	21110	3.7	779	2.9	621			
	365	25010	3.7	920	3.0	745		
3-03 2 305	26350	3.9	1018	3.1	817			
4-06 2 305	29510	3.7	1086	3.0	887			
	365	32980	3.8	1238	3.1	1014		
5-08 2 305	24470	3.9	961	3.1	755			
DHI								
3-03 2 365	30679	3.9	1210	3.2	969			
5-08 2 365	29185	3.9	1125	3.1	918			
LIFE	1684	126800	3.8	4806	3.1	3970		
SIRE: PALMYRA LOVER'S HELIGO'S-ET								
3 RD DAM: COVEY-FARMS RENO ROSY EX-91								
LIFETIME	2070DAYS	174790M	6055F	5269P				

MATERNAL BROTHER: 7AY77 GALNEY-EPC GALANT RAMIUS
 04/2009: +274M +10F +10P +54NM\$
 04/2009: +1.0T +99PTI