

7BS813 SAVAGE-LEIGH TRESSEL ET *TM

USA199115



USDA Genomic Evaluation (08/09)					
(Rel 53%)	-315Milk	% Test	Lbs.	Net Merit (Rel 50%)	-\$ 21
Protein		+ .01	- 9	Cheese Merit	-\$ 20
Fat		- .01	- 14	Fluid Merit	-\$ 22
SCS 2.98 (Rel 47%)	PL +1.1 (Rel 43%)			DPR +0.3 (Rel 41%)	
USDA/BSCBA Genomic Evaluation (08/09)					
	+0.8Type	Rel 50%		GPPR -9	
BSCBA Composites		+0.62UDC		+1.20FLC	
Sire Conception Rate 08/09 + 0.6 54% Rel 310 Obs					

TOP ACRES E P PREMIUM ET QS

VICTORY ACRES JUBILAT EMORY *TM "E91"

ARNOLA PEGGY PRISCILLA "5E91 E90MS" ELITE SBC

GS FLJ TIPPY ET "2E94 2E93MS"

3-4	365d	33,200M	4.4%	1,451F	3.5%	1,157P
4-9	365d	33,730M	4.3%	1,452F	3.4%	1,139P
8-0	365d	33,720M	3.9%	1,316F	3.1%	1,046P

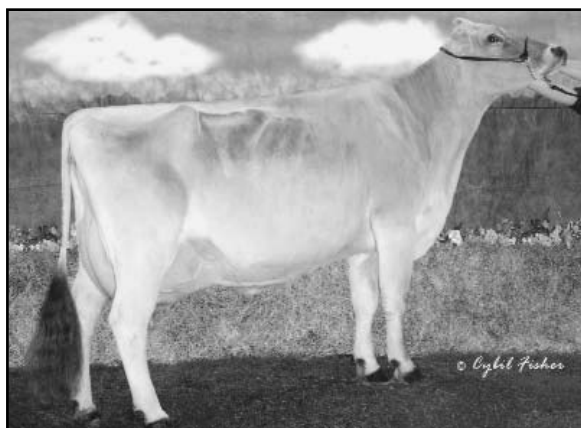
FOREST LAWN JASON ET (M)

KEN IR JADE TRINKET "2E90 2E90MS"

2-11	294d	14,560M	4.2%	608F	3.6%	530P
4-0	319d	19,050M	4.2%	807F	3.5%	669P
5-0	365d	26,770M	4.0%	1,061F	3.5%	928P
6-9	262d	21,090M	4.4%	929F	3.6%	749P

SIRE: Bridge View Elegant Jade ET
 DAM: Ken Ir Johnny Julie "3E90" CERT.
 8-9 365d 32,440M 3.7% 1,204F 3.3% 1,076P

- ◆ Four Excellent "93" maternal sisters (Tipster, Thumper, Tweetie and Trixy)
- ◆ Family with nearly 30 All-American nominations and counting
- ◆ Premium x Tippy = Winning game plan



GS FLJ TIPPY ET "2E94 2E93MS"

	50 %Rel T	-2	-1	0	1	2	
STATURE							2.00 T
DAIRY FORM							0.30 T
STRENGTH							1.10 S
RUMP WIDTH							1.10 W
RUMP ANGLE							0.60 S
LEGS SIDE VIEW							0.90 P
LEGS REAR VIEW							0.70 S
FOOT ANGLE							0.70 S
FORE ATTACHMENT							1.30 S
REAR UDDER HEIGHT							0.70 H
UDDER CLEFT							0.30 S
UDDER DEPTH							0.70 S
FRONT TEAT PLACE							0.30 C
FRONT TEAT LENGTH							0.00 L

aAa: 243 DMS: 345,456 Born: 09/06/2006
 Breeder: Jami & Chip Savage, Knoxville, MD
 Acquired from: Garrison Brothers, West Salem, OH