



7BS821 NOR-BERT ASTRONAUT*TM

USA199091



USDA Genomic Evaluation (08/09)					
(Rel 53%)	+811Milk	% Test	Lbs.	Net Merit (Rel 51%)	+\$ 115
Protein		- .06	+ 13	Cheese Merit	+\$ 90
Fat		- .08	+ 15	Fluid Merit	+\$ 154
SCS 2.93 (Rel 50%)	PL +1.2 (Rel 45%)			DPR -0.6 (Rel 43%)	
USDA/BSCBA Genomic Evaluation (08/09)					
	+0.6Type	Rel 49%		GPPR +56	
BSCBA Composites		-0.40UDC		-0.02FLC	

R HART TC DENMARK ET "E90"

TRIANGLE ACRES COLL POLLY "E92 E91MS" CERT.

HILLTOP ACRES EN DYNASTY ET *TM

BLESSING PRELUDE ASPEN "2E90 2E91MS" CERT.

2-3 365d 34,330M 4.1% 1,395F 3.5% 1,194P
 3-10 365d 40,140M 3.6% 1,465F 3.2% 1,282P
 5-0 365d 39,970M 3.4% 1,365F 3.3% 1,306P
 6-7 305d 33,680M 3.7% 1,238F 3.0% 1,013P

SIRE: Betta Vue Emory Prelude ET

DAM: Blessing Prophet Ashton "3E93 3E91MS"

Lifetime: 2,525d 234,330M 9,809F 8,348P

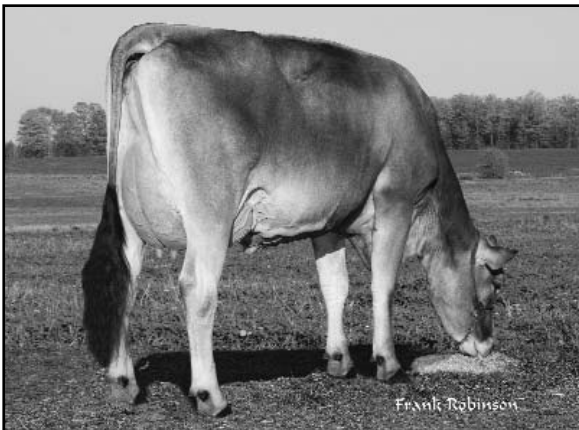
Mat. Brother: 7BS766 Blessing Banker Agenda ET *TM

TRIANGLE ACRES POLLYDEN ET *TM (SS)

BLESSING DYNASTY ASTRA ET "VG86 VG86MS" CERT.

2-2 365d 34,360M 4.0% 1,358F 3.0% 1,041P

- ◆ Combines four of the breed's most influential families into one impressive package
- ◆ A pedigree that has dairyman likeability all over it
- ◆ Five generations of Very Good and Excellent dams with over 30,000 pounds of milk



08/2009 USDA/BSCBA Genomic PA STA'S					
49 %Rel T	-2	-1	0	1	2
STATURE					0.00 T
DAIRY FORM					0.90 O
STRENGTH					0.90 S
RUMP WIDTH					0.40 W
RUMP ANGLE					0.10 S
LEGS SIDE VIEW					0.20 P
LEGS REAR VIEW					0.10 S
FOOT ANGLE					0.10 L
FORE ATTACHMENT					0.10 S
REAR UDDER HEIGHT					0.70 H
UDDER CLEFT					1.10 S
UDDER DEPTH					0.70 D
FRONT TEAT PLACE					0.70 C
FRONT TEAT LENGTH					1.70 L

aAa: 621 DMS: 561 Born: 02/17/2007
 Breeder: Jeremy Dankert, Bremen, IN

BLESSING DYNASTY ASTRA ET "VG86 VG86MS" CERT.