



7BS826 OAK VIEW ZEUS AUGUST *TM

USA199293



USDA Genomic Evaluation (08/09)					
(Rel 52%)	+977Milk	% Test	Lbs.	Net Merit (Rel 49%)	+\$ 384
Protein		+ .03	+ 38	Cheese Merit	+\$ 400
Fat		+ .02	+ 43	Fluid Merit	+\$ 354
SCS 2.67 (Rel 49%)	PL +2.9 (Rel 44%)			DPR -0.4 (Rel 43%)	
USDA/BSCBA Genomic Evaluation (08/09)					
	+1.2Type	Rel 49%		GPPR +195	
BSCBA Composites		+0.76UDC		+0.41FLC	

RED BRAE PRELUDE ZEUS (M)

BETTA VUE EMORY PRELUDE ET "E91"

RED BRAE PATRICK ZADEVA "E92 E92MS" CERT.

BLESSING COLLECTION ALIE ET "3E90 3E90MS" CERT.

2-3	362d	32,730M	4.1%	1,352F	3.2%	1,063P
4-5	365d	35,170M	4.4%	1,558F	3.3%	1,144P
6-6	365d	38,220M	3.6%	1,364F	3.2%	1,212P
8-5	365d	35,530M	4.4%	1,577F	3.0%	1,077P

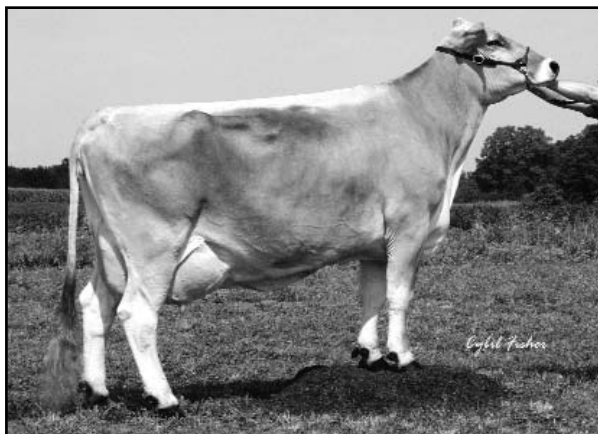
R HART BC COLLECTION *TM "E93"

BLESSING PROPHET ASHTON *TW "3E91 3E91MS" ELITE

2-9	365d	34,170M	4.1%	1,408F	3.8%	1,298P
4-11	365d	39,470M	4.2%	1,653F	3.4%	1,351P
6-2	356d	35,980M	4.7%	1,682F	4.0%	1,422P
7-5	365d	36,170M	3.7%	1,351F	3.4%	1,226P
9-8	365d	37,770M	4.3%	1,612F	3.3%	1,240P

SIRE: Top Acres Dotson Prophet ET

- ◆ Want profitable cows that last...AUGUST delivers
- ◆ "Cow man" mating to yield "money man" results
- ◆ The "A" team for consistent results...



BLESSING COLLECTION ALIE ET "3E90 3E90MS" CERT.

	49 %Rel T	-2	-1	0	1	2	
STATURE							2.40 T
DAIRY FORM							1.80 O
STRENGTH							0.60 S
RUMP WIDTH							0.50 W
RUMP ANGLE							0.30 H
LEGS SIDE VIEW							0.60 S
LEGS REAR VIEW							0.10 S
FOOT ANGLE							0.60 S
FORE ATTACHMENT							1.10 S
REAR UDDER HEIGHT							0.90 H
UDDER CLEFT							0.60 W
UDDER DEPTH							0.30 S
FRONT TEAT PLACE							0.30 C
FRONT TEAT LENGTH							1.50 S

aAa: 642 DMS: 561 Born: 05/27/2007
Breeder: Brian Lennon, Cumby, TX

Sampled cooperatively with Western Brown Swiss Sires