

7GU435 COULEE CREST CHALLENGE KAIN-ET

USA 68019985



Breeder:

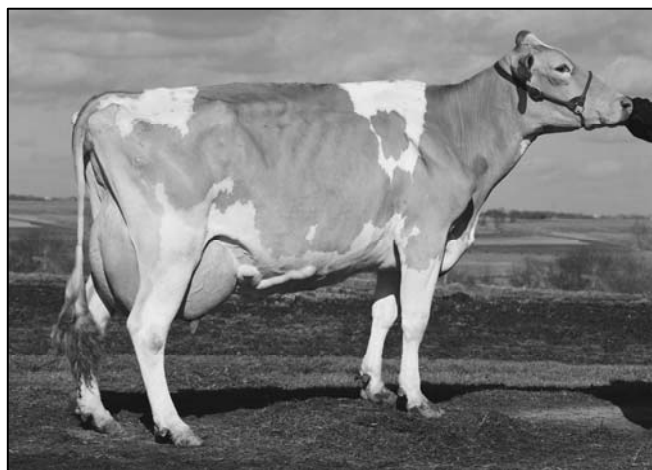
Kurt Peterson
Cashton, WI

Born: 09/28/2007

Parent Average:

+863M +36F +29P +271NM\$
+1.4T +158 PTI

- Combines high components from Challenge with super milk cow family
- Two class leader dams have five records over 30,000 pounds of milk
- BANGER x Challenge complimentary mating spells success



ROZELYN PATMAR EL GATO USA602230 1GU382
04/09 USDA PTA -617M +0.11% -10F +246NM\$
+0.11% -3P +281CM\$ 80% Rel
AGA 04/09 PTAT +0.2 80% Rel PTI +31

PAFARMS FORTRESS CASSANDRA USA3042855
DHI Herd # 35490414 Cow Control 01304
04/09 USDA PTA +1740M -0.10% +59F +319NM\$
-0.06% +46P +303CM\$ 68% Rel
2 Rec YDev: +5545M +201F +158P
3 App 04/09 PTAT +1.6 67% Rel CPI +201
Appraisal: 89 @ 3-07
2-01 365D 2X 30530M* 3.9% 1203F 3.4% 1052P* DHIA

IDLE GOLD E CHALLENGE-ET USA604268 1GU418
04/09 USDA PTA +153M +0.17% +35F +345NM\$
+0.06% +15P +367CM\$ 78% Rel
AGA 04/09 PTAT +1.4 75% Rel PTI +148

ST	SR	BD	DF	RA	TW	RV	RL	FA
+0.2	-0.5	-0.4	+0.9	L0.5	-0.5	H1.0	Pl.1	S0.2
FU	RH	RW	UC	UD	TP	TL		
+2.8	+2.5	+1.2	+0.2	S2.4	C0.6	-0.4		

COULEE CREST BANGER KRISTA USA3082558
DHI Herd # 35420065 Cow Control 00895
04/09 USDA PTA +1572M -0.18% +36F +196NM\$
-0.04% +43P +184CM\$ 58% Rel
3 Rec YDev: +4270M +112F +116P
2 App 04/09 PTAT +1.3 52% Rel CPI +166

ST	SR	BD	DF	RA	TW	RV	RL	FA
+2.7	+2.5	+2.6	+1.5	L0.4	+1.7	H1.3	P0.5	S0.3
FU	RH	RW	UC	UD	TP	TL		
-0.1	+1.7	+2.0	+0.7	D0.7	W0.5	+2.3		

Appraisal: 87 @ 5-01 (81/83)
Gold Star Dam - 2006
2-00 324D 3X 25100M 4.0% 1001F 3.0% 757P 91
2-11 305D 3X 31910M* 4.0% 1274F* 3.2% 1031P* 89
4-04 365D 2X 38746M* 3.9% 1517F 3.1% 1219P* DHIA
1403D 120990M 4.0% 4857F 3.2% 3842P LIFE

MY DAY BLISS BANGER-ET USA603872 7GU379
04/09 USDA PTA +664M +0.09% +14F +4NM\$
-0.04% +14P -10CM\$ 96% Rel
AGA 04/09 PTAT +1.1 96% Rel PTI +75

COULEE CREST VALOR KRISTA USA3075370
DHI Herd # 35420065 Cow Control 00889
04/09 USDA PTA +1341M -0.17% +29F +227NM\$
+0.01% +46P +238CM\$ 64% Rel
5 Rec YDev: +3079M +69F +106P
3 App 04/09 PTAT +1.3 60% Rel CPI +151
Appraisal: 90 @ 6-04 (87/87)
1-11 305D 2X 15350M 4.2% 649F 3.3% 512P DHIA
3-08 341D 3X 23230M 4.1% 961F 3.3% 762P 92
4-08 346D 3X 30440M 3.6% 1088F 3.3% 1013P 90
5-09 305D 3X 35980M* 3.7% 1348F 3.2% 1161P* 89
7-03 365D 2X 39558M* 3.7% 1455F 3.2% 1276P* DHIA
2098D 165020M 3.8% 6328F 3.3% 5441P LIFE
SIRE: TAMARACKS PERFECTOS VALOR
DAUGHTERS:
COULEE CREST MAXIE KELLY-ET 85 @ 2-05 (86/84)
COULEE CREST MAXIE KENDY-ET 86 @ 2-05 (88/85)
COULEE CREST TILLER KATLIN-ET 85 @ 2-02 (80/83)