

7GU436 FARIA FARMS SELECT NACHO-ET

USA 68023171



Breeder:

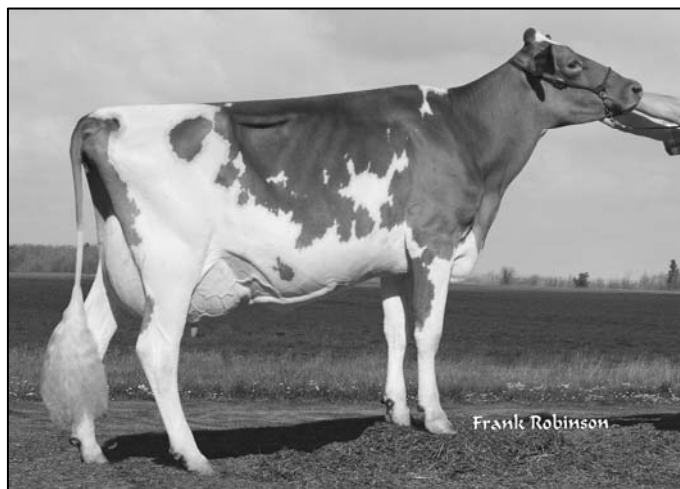
Frank & Patti Faria
Escalon, CA

Born: 3/08/2008

Parent Average:

+594M +45F +22P +205NM\$
+2.1T +168 PTI

- National Grand Champion dam is a two-time All American
- Performance proven pedigree with second and third dams as former No. 1 CPI cows
- Full sister was nominated All American in 2008



ROZELYN PATMAR EL GATO USA 602230 1GU382
04/09 USDA PTA -617M +0.11% -10F +0.11% -3P
+1.4DPR +4.9PL +246NM\$ 79NM%ile +281CM\$ 80% Rel
AGA 04/09 PTAT +0.2 +1.0UDC +0.2FLC 80%Rel PTI +31

PAFARMS FORTRESS CASSANDRA USA 3042855
DHI Herd # 35490414 Cow Control 01304
04/09 USDA PTA +1740M -0.10% +59F -0.06% +46P
-0.7DPR +1.1PL +319NM\$ 96NM%ile +303CM\$ 68% Rel
2 Rec YDev: +5545M +201F +158P
3 App 04/09 PTAT +1.6 +0.3UDC +1.1FLC 67%Rel CPI +201
Appraisal: 89 @ 3-07
2-01 365D 2X 30530M* 3.9% 1203F 3.4% 1052P* DHIA

IDLE GOLD E CHALLENGE-ET USA 604268 1GU418
04/09 USDA PTA +153M +0.17% +35F +0.06% +15P
+0.0DPR +4.0PL +345NM\$ 95NM%ile +367CM\$ 78% Rel
AGA 04/09 PTAT +1.4 +1.3UDC +1.3FLC 75%Rel PTI +148

ST	SR	BD	DF	RA	TW	RV	RL	FA
+0.2	-0.5	-0.4	+0.9	L0.5	-0.5	H1.0	P1.1	S0.2
FU	RH	RW	UC	UD	TP	TL		
+2.8	+2.5	+1.2	+0.2	S2.4	C0.6	-0.4		

LANG HAVEN TILLER NIRVANA-ET USA 68003934
DHI Herd # 93390614 Cow Control 00728
04/09 USDA PTA +1034M +0.05% +54F -0.03% +29P
-2.4DPR -3.6PL +65NM\$ 48NM%ile +59CM\$ 49% Rel
1 Rec YDev: +2017M +127F +67P
1 App 04/09 PTAT +2.7 +1.0UDC +2.3FLC 48%Rel CPI+184

ST	SR	BD	DF	RA	TW	RV	RL	FA
+5.4	+2.2	+2.3	+3.2	H0.1	+3.1	H1.3	P0.3	S1.1
FU	RH	RW	UC	UD	TP	TL		
+1.1	+2.6	+2.9	+0.9	S0.4	C1.5	+0.1		

Appraisal: 89 @ 2-05 (88/90)
2-01 365D 2X 23890M 4.6% 1103F 3.4% 806P 101
GRAND CHAMPION NGS-SACRAMENTO 2007
NOMINATED ALL AMERICAN SR 2-YEAR-OLD 2007
ALL AMERICAN FALL YEARLING 2006
ALL AMERICAN FALL CALF 2005
DAUGHTER:
FARIA FARMS CHALLENGE NOEL
NOMINATED ALL AMERICAN WINTER CALF 2008

TROTACRE LORAL TILLER-ET USA 603341 7GU360
04/09 USDA PTA +544M +0.02% +28F -0.05% +9P
-3.5DPR -3.9PL -106NM\$ 0NM%ile -121CM\$ 98% Rel
AGA 04/09 PTAT +2.7 +1.0UDC +1.9FLC 98%Rel PTI +103

LANG HAVEN OPTION NADIA-ET USA 3073416
DHI Herd # 35320145 Cow Control 00735
04/09 USDA PTA +1518M +0.04% +75F -0.02% +45P
-1.3DPR -0.6PL +305NM\$ 96NM%ile +301CM\$ 64% Rel
3 Rec YDev: +3565M +183F +116P
3 App 04/09 PTAT +1.9 +0.5UDC +0.8FLC 59%Rel CPI +215
Appraisal: 90 @ 3-07 (90/91)
2-01 305D 2X 25100M 5.9% 1485F* 3.2% 800P 96
3-04 365D 2X 37270M* 5.9% 2205F* 3.3% 1212P* DHIA
SIRE: JENSGOLDEN BIONIC OPTION
DAUGHTERS:
LANG HAVEN TILLER NEVADA-ET
2-04 304D 2X 28240M 4.1% 1169F 3.0% 853P 95
LANG HAVEN TILLER NEXUS-ET
86 @ 2-11 (86/83)
2-03 344D 2X 22263M 6.2% 1372F 3.3% 735P
LANG HAVEN TILLER NORMIE-ET
87 @ 2-09 (86/87)
LANG HAVEN TILLER NEVAEH-ET
87 @ 2-09 (90/85)
2-02 305D 2X 25556M 5.5% 1399F 3.3% 841P
SON: 7GU414 LANG HAVEN TILLER NASH