



7JE1013 OOMSDALE JAC CASEY COWELL-ET

USA67080416



USDA Genomic Evaluation (08/09)					
(Rel 56%)	+1,571Milk	% Test	Lbs.	Net Merit (Rel 53%)	+\$ 426
Protein		+ .01	+ 57	Cheese Merit	+\$ 444
Fat		+ .02	+ 75	Fluid Merit	+\$ 391
SCS 3.11 (Rel 50%)	PL +1.9 (Rel 43%)			DPR -1.4 (Rel 41%)	
USDA/AJCA Genomic Evaluation (08/09)					
	+1.7Type	Rel 51%		GJPI™ +251	
Jersey Udder Index™		+6.44			

MASON LEMVIG JACINTO-ET

SDK FYN LEMVIG

OOMSDALE GRATITUDE COUNTRY CASEY-ET (E-90%)

3-8 305d 25,680M 4.4% 1,124F 3.5% 905P 3X

MASON DECLO JUNE (E-92%)

BW COUNTRY-ET

OOMSDALE GORDO GOLDIE GRATITUDE (E-90%)

2-0 305d 22,220M 4.5% 1,005F 3.4% 749P

3-10 305d 26,940M 4.2% 1,142F 3.2% 852P 3X

SIRE: Bold D Gem Gordo

DAM: Oomsdale Alf Gloria Goldie (E-90%)

2-0 305d 18,770M 6.0% 1,135F 4.1% 765P 3X

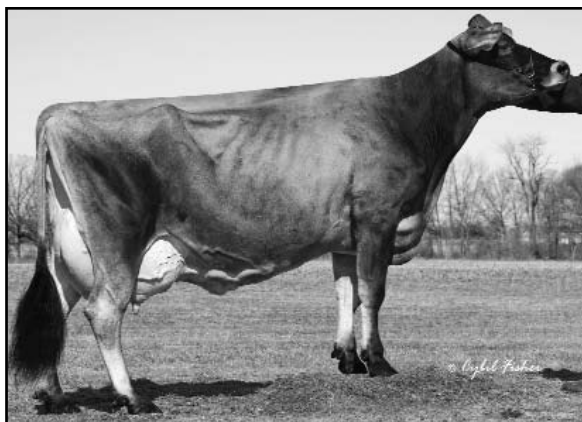
4th DAM: Oomsdale Herm Groovy Gloria (E-92%)

4-6 305d 25,830M 5.3% 1,372F 3.8% 969P 3X

5th DAM: Oomsdale Sooner Gina Groovy (E-90%)

6-5 305d 20,370M 5.2% 1,058F 4.0% 824P 3X

- ◆ Easy to use with no Duncan Belle and no Maid in the pedigree
- ◆ Outstanding cow family backed by seven generations of (VG-87%) and higher
- ◆ Great combination of high milk and high components from a family that returns bulls to active A.I



OOMSDALE GRATITUDE COUNTRY CASEY-ET (E-90%)

	51 %Rel T	-2	-1	0	1	2	
STATURE							1.80 T
DAIRY FORM							1.80 O
STRENGTH							1.80 S
RUMP WIDTH							1.20 W
RUMP ANGLE							0.10 H
LEGS SIDE VIEW							0.40 S
FOOT ANGLE							0.60 S
FORE ATTACHMENT							1.70 S
REAR UDDER HEIGHT							1.90 H
UDDER CLEFT							1.40 S
UDDER DEPTH							1.10 S
FRONT TEAT PLACE							2.20 C
FRONT TEAT LENGTH							0.20 L

DMS: 456 Born: 04/09/2008
Breeder: Michael Arend Ooms, Valatie, NY