



7JE1027 GABYS IMPULS DAVENPORT-ET

USA116027632



USDA Genomic Evaluation (08/09)					
(Rel 56%)	+850Milk	% Test	Lbs.	Net Merit (Rel 53%)	+\$ 380
Protein		+ .05	+ 39	Cheese Merit	+\$ 409
Fat		+ .12	+ 61	Fluid Merit	+\$ 331
SCS 3.18 (Rel 51%)	PL +2.4 (Rel 46%)			DPR +0.3 (Rel 46%)	
USDA/AJCA Genomic Evaluation (08/09)					
	+1.3Type	Rel 52%		GJPI™	+203
Jersey Udder Index™		+4.05			

ISDK Q IMPULS

GABYS JACINTO DEMA (E-91%)

2-0	305d	19,700M	4.8%	944F	3.2%	633P
3-1	305d	32,540M	4.1%	1,324F	3.4%	1,094P
4-9	305d	34,510M	4.6%	1,571F	3.3%	1,141P

- ◆ Components specialist: plus for both fat and protein percents
- ◆ Unique sire stack: Low EFI option for many different pedigrees
- ◆ Great potential for big time production

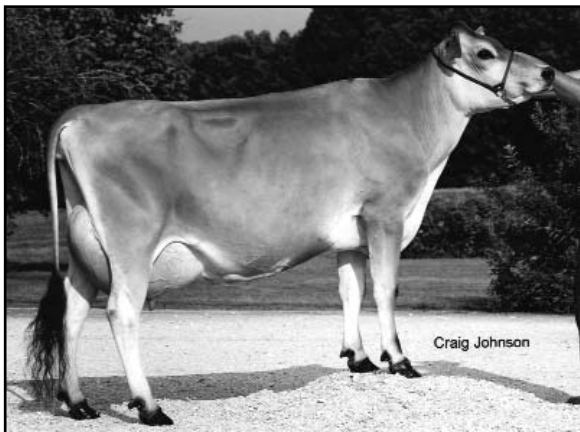
ISDK SKAE IDE

DNK 25490 01966

MASON LEMVIG JACINTO-ET

GABYS ALL AMERICAN DEMA (VG-88%)

3-10	305d	19,850M	4.8%	960F	3.3%	649P
5-4	305d	22,080M	4.1%	903F	3.4%	743P
SIRE: Walden Farm Mr T Quest Angel-ET						
DAM: Gabys Berretta Dema (E-92%)						
5-0	305d	19,460M	4.2%	823F	3.7%	719P



GABYS JACINTO DEMA (E-91%)

