



7JE867 GRIFFENS GOVERNOR-ET

USA115087248



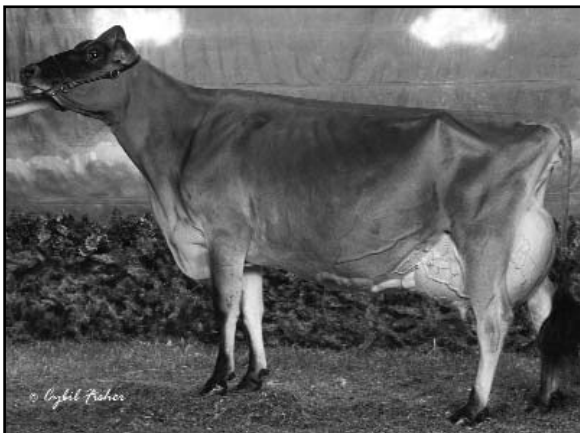
USDA Genomic Evaluation (08/09)					
(Rel 58%)	+9Milk	% Test	Lbs.	Net Merit (Rel 56%)	+\$ 122
Protein		+ .02	+ 4	Cheese Merit	+\$ 130
Fat		+ .09	+ 16	Fluid Merit	+\$ 110
SCS 3.05 (Rel 52%)	PL +1.6 (Rel 48%)			DPR +0.2 (Rel 47%)	
USDA/AJCA Genomic Evaluation (08/09)					
	+1.0Type	Rel 53%		GJPI™	+72
Jersey Udder Index™		+4.18			
Sire Conception Rate	08/09		+ 1.8	93% Rel	3,235 Obs

LESTER SAMBO

LLOLYN JUDE GRIFFEN-ET (E-94%)

5-0 365d 31,431M 5.2% 1,635F 3.6% 1,127P
 6-11 305d 24,470M 4.6% 1,129F 3.4% 826P
 2007 Grand Champion World Dairy Expo

- ◆ Dam was grand champion 2007 All American Jersey Show and World Dairy Expo
- ◆ Sire of Reserve Jr. Champion, 2008 All American Jersey Show
- ◆ SAMBO x Griffen (E-94%) x three Excellent Canadian dams



LLOLYN JUDE GRIFFEN-ET (E-94%)

HIGHLAND DUNCAN LESTER

BOOMER BELLE (E-93%)

MASTER C TOPS

LLOLYN FRED'S GOLD 31B (EX-2-CAN)

3-0 305d 12,451M 5.2% 644F 3.8% 468P
 4-1 305d 14,902M 5.2% 770F 3.9% 578P
 SIRE: Lollyn Veda's Topaz Fred
 DAM: Lollyn Topas Gold 31X (EX-1)
 4-1 305d 12,735M 5.4% 688F 4.0% 512P
 4th DAM: Lollyn Surville Gold 18P (EX-1)
 4-3 305d 12,934M 5.0% 649F 3.8% 496P

53 %Rel T	-2	-1	0	1	2	
STATURE						2.30 T
DAIRY FORM						1.10 O
STRENGTH						0.30 S
RUMP WIDTH						0.30 W
RUMP ANGLE						0.40 S
LEGS SIDE VIEW						0.30 P
FOOT ANGLE						0.70 S
FORE ATTACHMENT						1.50 S
REAR UDDER HEIGHT						1.20 H
UDDER CLEFT						0.10 S
UDDER DEPTH						1.30 S
FRONT TEAT PLACE						1.70 C
FRONT TEAT LENGTH						1.10 L

aAa: 612 DMS: 234,345 Born: 09/18/2005
 Breeder: Martin & Louie Cozzitorto, Gustine, CA