



7JE987 FOREST GLEN JACINTOS JADED-ET

USA67069574



USDA Genomic Evaluation (08/09)					
(Rel 62%)	+672Milk	% Test	Lbs.	Net Merit (Rel 60%)	+\$ 199
Protein		+ .07	+ 36	Cheese Merit	+\$ 232
Fat		+ .05	+ 39	Fluid Merit	+\$ 142
SCS 3.12 (Rel 58%)	PL +0.0 (Rel 51%)			DPR -1.4 (Rel 50%)	
USDA/AJCA Genomic Evaluation (08/09)					
	+0.7Type	Rel 58%		GJPI™ +130	
Jersey Udder Index™		+2.96			

MASON LEMVIG JACINTO-ET

FOREST GLEN JACE JADED-ET (E-91%)

1-10 301d 19,300M 4.4% 840F 3.6% 704P 3X
 2-10 305d 28,970M 4.4% 1,287F 3.8% 1,106P 3X

- ◆ From one of the breed's hottest GJPI cow families
- ◆ Winning combination of milk and components
- ◆ Bred to make the profitable kind

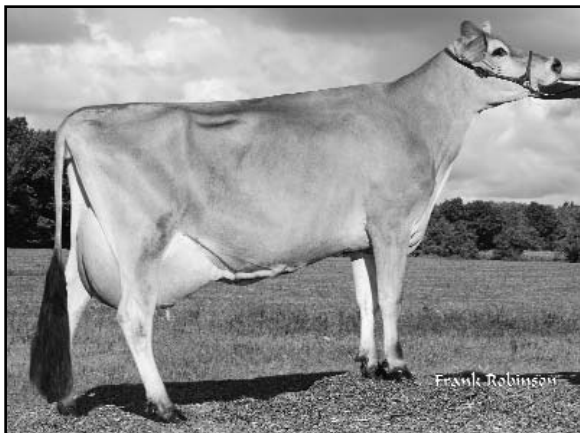
ISDK FYN LEMVIG

MASON DECLO JUNE (E-92%)

WINDY WILLOW MONTANA JACE

FOREST GLEN VD JADE-ET (E-90%)

2-0 305d 27,530M 5.0% 1,367F 3.5% 964P 3X
 SIRE: MVF Bold Venture Daniel
 DAM: Havs Chief Berretta Jade (E-95%)
 4-2 305d 23,570M 3.5% 820F 3.8% 894P
 4th DAM: Havs Chief Goldie (VG-87%)



FOREST GLEN JACE JADED-ET (E-91%)

	58 %Rel T	-2	-1	0	1	2	
STATURE							0.30 T
DAIRY FORM							0.90 O
STRENGTH							0.00 S
RUMP WIDTH							0.50 N
RUMP ANGLE							1.60 S
LEGS SIDE VIEW							0.10 S
FOOT ANGLE							0.30 S
FORE ATTACHMENT							0.60 S
REAR UDDER HEIGHT							0.60 H
UDDER CLEFT							0.60 W
UDDER DEPTH							0.30 S
FRONT TEAT PLACE							1.40 C
FRONT TEAT LENGTH							0.20 L

aAa: 516 DMS: 345,234 Born: 09/28/2007
 Breeder: Dan Bansen, Dayton, OR