



7JE989 SUNSET CANYON NADINE PRESTIGE

USA115550553



USDA Genomic Evaluation (08/09)					
(Rel 57%)	-730Milk	% Test	Lbs.	Net Merit (Rel 55%)	+\$ 45
Protein		+ .04	- 19	Cheese Merit	+\$ 52
Fat		+ .25	+ 10	Fluid Merit	+\$ 35
SCS 3.05 (Rel 53%)	PL +1.7 (Rel 50%)			DPR +0.6 (Rel 48%)	
USDA/AJCA Genomic Evaluation (08/09)					
	+1.5Type	Rel 54%		GJPI™ +22	
Jersey Udder Index™		+4.41			

SOONER CENTURION-ET

SOLDIERBOY BOOMER SOONER OF CJF

MAGIC KAVA KAY GLOVER (E-90%)

DUNCAN CHIEF

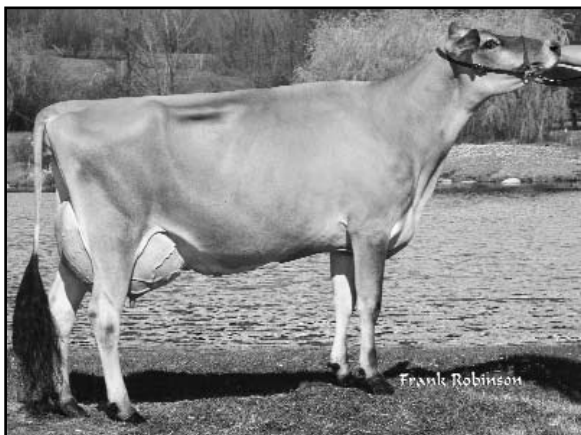
SUNSET CANYON DC NADINE-ET (E-91%)

WAYMAR PATRICK NADINE (EX-97-CAN)

1-10 305d 14,410M 5.0% 721F 3.4% 495P
 2-8 305d 20,660M 4.8% 996F 3.4% 709P

10-11 365d 28,476M 4.8% 1,375F 3.5% 1,009P
 12-11 365d 24,283M 4.6% 1,124F 3.6% 867P 3X
 SIRE: Nabdon Master Patrick 7R

- ◆ CENTURION X (E-91%) DC X (EX-97-CAN) Nadine
- ◆ Bred to create the show winners
- ◆ Correct type in one generation



SUNSET CANYON DC NADINE-ET (E-91%)

	54 %Rel T	-2	-1	0	1	2	
STATURE							1.00 T
DAIRY FORM							1.20 O
STRENGTH							0.50 S
RUMP WIDTH							0.70 W
RUMP ANGLE							1.10 H
LEGS SIDE VIEW							0.30 P
FOOT ANGLE							1.20 S
FORE ATTACHMENT							2.10 S
REAR UDDER HEIGHT							1.00 H
UDDER CLEFT							0.10 W
UDDER DEPTH							1.60 S
FRONT TEAT PLACE							1.90 C
FRONT TEAT LENGTH							0.60 S

aAa: 612 DMS: 561,456 Born: 05/28/2007
 Breeder: Sunset Canyon & Nathan Jensen, Beaver, OR