



7JE991 DAVE-RON MILITIA SECURITY

USA67171036

USDA Genomic Evaluation (08/09)					
(Rel 55%)	+273Milk	% Test	Lbs.	Net Merit (Rel 52%)	+\$ 298
Protein		+ .10	+ 27	Cheese Merit	+\$ 339
Fat		+ .18	+ 45	Fluid Merit	+\$ 230
SCS 3.18 (Rel 49%)	PL +3.0 (Rel 42%)			DPR +0.2 (Rel 40%)	
USDA/AJCA Genomic Evaluation (08/09)					
	+1.3Type	Rel 50%		GJPI™	+166
Jersey Udder Index™		+4.71			
Sire Conception Rate	08/09		- 0.3	47% Rel	231 Obs

SUNSET CANYON RP MILITIA-ET

ROCK ELLA PERIMITER-ET

DAVE-RON COUNTRY SECRET (E-91%)

1-10 305d 18,550M 6.0% 1,105F 3.8% 707P

TENN HAUG E MAID (E-93%)

BW COUNTRY-ET

NOBLEDALE VICTORIAS SYDNEY-ET (E-90%)

2-1 305d 23,230M 4.7% 1,087F 3.6% 841P

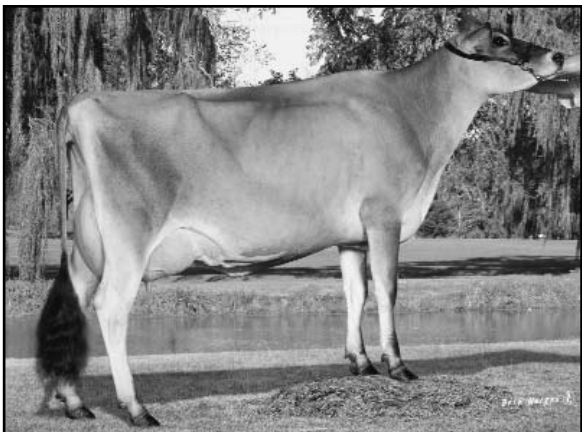
SIRE: Windy Willow Montana Jace

DAM: Nobledale Pitino Victoria-ET (E-94%)

4th DAM: Nobledale Juno Vermont (E-94%)

5th DAM: Nobledale Legend Vertus (E-92%)

- ◆ Elite production and type, and high productive life
- ◆ Outstanding, productive sire stack
- ◆ Great potential for a big timer!



DAVE-RON COUNTRY SECRET (E-91%)

	50%Rel T	-2	-1	0	1	2	
STATURE							3.10 T
DAIRY FORM							1.30 O
STRENGTH							1.00 S
RUMP WIDTH							0.70 W
RUMP ANGLE							0.60 S
LEGS SIDE VIEW							0.10 P
FOOT ANGLE							1.00 S
FORE ATTACHMENT							0.90 S
REAR UDDER HEIGHT							1.40 H
UDDER CLEFT							1.10 S
UDDER DEPTH							1.20 S
FRONT TEAT PLACE							0.10 C
FRONT TEAT LENGTH							1.40 L

aAa: 261453 DMS: 123,135 Born: 06/16/2007
Breeder: Freeman Partners, Greenville, IL