



7HO10015 MR INDIANHEAD ARISTOCRAT-ET

USA139005459 100% RHA-NA TR TV TL TD



USDA Genomic Evaluation (08/09)					
(Rel 72%)	+1,517Milk	% Test	Lbs.	Net Merit (Rel 68%)	+\$ 619
Protein		+ .05	+ 58	Cheese Merit	+\$ 642
Fat		+ .18	+ 99	Fluid Merit	+\$ 485
SCS 2.99 (Rel 67%)	PL +3.6 (Rel 62%)			DPR -2.2 (Rel 61%)	
USDA/HA Genomic Evaluation (08/09)					
	+3.49Type	Rel 67%		GTPI™ +2094	
HA Composites	+2.92UDC	+2.78FLC	+2.47BD	+2.42D	
Calving Ease (%DBH)	08/09	Service Sire	9%	63% Rel	
		Daughter	8%	60% Rel	
Sire Conception Rate	08/09		+ 1.0	63% Rel	447 Obs

PICSTON SHOTTLE-ET (GM)

CAROL PRELUDE MTOTO-ET (GM)

GOLFING ARIZONA-ET (VG-88)

2-0 365d 26,870M 4.5% 1,196F 3.4% 912P 3X

CONDON AERO SHARON

LADINO PARK TALENT-IMP-ET

LUCK-E BLITZ ALABAMA-ET (EX-90-EX-MS)

2-4 365d 31,970M 3.6% 1,157F 3.0% 957P 3X

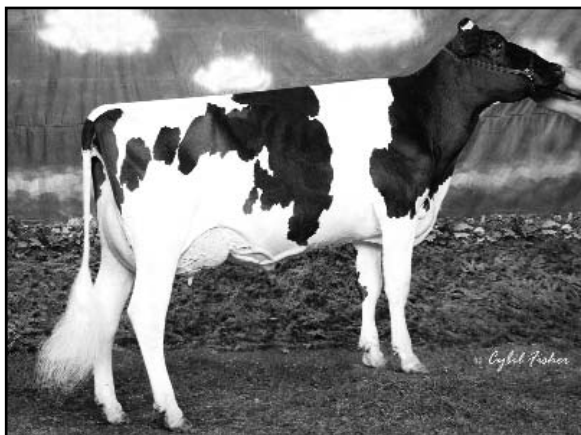
4-6 365d 40,350M 3.7% 1,498F 2.9% 1,167P 3X

SIRE: Fustead Emory Blitz-ET (EX-95-GM)

DAM: Luck-E Skychief Arizona-ET (EX-90-GMD-DOM)

5-1 365d 56,280M 5.1% 2,872F 3.1% 1,749P

- ◆ Shottle x (VG-88) Talent for all udder improvement
- ◆ High component pedigree with loads of milk
- ◆ Expect style and balance with rock solid feet and legs



GOLFING ARIZONA-ET (VG-88)

08/2009 USDA/HA Genomic PA STA'S					
67 %Rel T	-2	-1	0	1	2
STATURE					2.93 T
DAIRY FORM					3.13 O
STRENGTH					1.84 S
BODY DEPTH					2.24 D
RUMP WIDTH					2.12 W
RUMP ANGLE					0.25 S
LEGS SIDE VIEW					1.64 S
LEGS REAR VIEW					2.46 S
FOOT ANGLE					2.06 S
FEET & LEGS SCORE					3.91 H
FORE ATTACHMENT					3.69 S
REAR UDDER HEIGHT					4.12 H
UDDER CLEFT					3.67 S
UDDER DEPTH					2.93 S
FRONT TEAT PLACE					2.94 C
REAR TEAT PLACE					2.25 C
FRONT TEAT LENGTH					0.06 S

aAa: 231 DMS: 234,123 Born: 09/23/2007
Breeder: Robert Schauf & Golfing Partners, Barron, WI