



7HO10052 KLASSIC BIG TIME-ET

USA61143535 100% RHA-NA TV TL TD



USDA Genomic Evaluation (08/09)					
(Rel 76%)	+1,050Milk	% Test	Lbs.	Net Merit (Rel 73%)	+\$ 690
Protein		+ .04	+ 42	Cheese Merit	+\$ 711
Fat		+ .04	+ 48	Fluid Merit	+\$ 654
SCS 2.63 (Rel 71%)	PL +6.1 (Rel 66%)			DPR +0.4 (Rel 64%)	
USDA/HA Genomic Evaluation (08/09)					
	+4.75Type	Rel 70%		GTPITM	+2286
HA Composites	+4.73UDC	+3.76FLC	+3.29BD	+2.60D	
Calving Ease (%DBH)	08/09	Service Sire	6%	69% Rel	
		Daughter	5%	63% Rel	
Sire Conception Rate	08/09		+ 3.3	70% Rel	618 Obs

REGANCREST-HHF MAC-ET (EX-92-GM)

MARA-THON BW MARSHALL-ET (VG-86-GM)

REGANCREST BARBI-ET (VG-85)

2-0 365d 26,339M 3.8% 1,012F 3.3% 892P

REGANCREST RUDOLPH DENA-ET (VG-89-EX-MS-DOM)

PICSTON SHOTTLE-ET (GM)

REGANCREST-PR BARBIE-ET (EX-92-EX-MS-GMD-DOM)

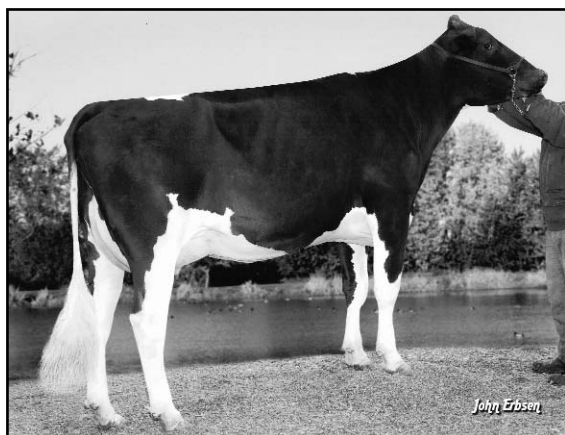
2-6 365d 31,690M 3.9% 1,237F 3.1% 990P

SIRE: Regancrest Elton Durham-ET (EX-90-GM)

DAM: Regancrest Juror Brina-ET (EX-92-GMD)

4-4 365d 40,640M 3.6% 1,478F 2.8% 1,140P

- ◆ Nearly +5.00 Type. . .a rare find
- ◆ Mac x (VG-85) Shottle x (EX-92) Durham Barbie
- ◆ Great health traits and good components



REGANCREST BARBI-ET (VG-85)

70 %Rel T	-2	-1	0	1	2	
STATURE						4.05 T
DAIRY FORM						2.08 O
STRENGTH						2.52 S
BODY DEPTH						2.46 D
RUMP WIDTH						2.66 W
RUMP ANGLE						1.18 H
LEGS SIDE VIEW						0.65 P
LEGS REAR VIEW						4.72 S
FOOT ANGLE						5.12 S
FEET & LEGS SCORE						3.24 H
FORE ATTACHMENT						6.12 S
REAR UDDER HEIGHT						5.84 H
UDDER CLEFT						3.27 S
UDDER DEPTH						5.02 S
FRONT TEAT PLACE						1.58 C
REAR TEAT PLACE						2.39 C
FRONT TEAT LENGTH						1.11 L

aA: 123 DMS: 126,561 Born: 12/11/2007
Breeder: Klassic Holsteins, Waseca, MN