



7HO10059 MR REGELCREEK SHOT ALAN-ET

USA53557280 100% RHA-NA



USDA Genomic Evaluation (08/09)					
(Rel 75%)	+1,928Milk	% Test	Lbs.	Net Merit (Rel 72%)	+\$ 824
Protein		+ .05	+ 72	Cheese Merit	+\$ 851
Fat		+ .10	+ 97	Fluid Merit	+\$ 774
SCS 2.69 (Rel 70%)	PL +5.7 (Rel 66%)			DPR -1.4 (Rel 64%)	
USDA/HA Genomic Evaluation (08/09)					
	+4.22Type	Rel 70%		GTPITM	+2380
HA Composites	+2.98UDC	+3.13FLC	+2.71BD	+2.80D	
Calving Ease (%DBH)	08/09	Service Sire	7%	67% Rel	
		Daughter	5%	63% Rel	
Sire Conception Rate	08/09		+ 0.2	65% Rel	475 Obs

PICSTON SHOTTLE-ET (GM)

CAROL PRELUDE MTOTO-ET (GM)

MD-MAPLE-DELL GOLD AILEY-ET (VG-85)

2-2 305d 20,480M 4.1% 841F 3.1% 627P

CONDON AERO SHARON

BRAEDALE GOLDWYN (GM)

MS M-M-D NOBEL ARUBA (EX-94-2E-EX-MS-DOM)

2-1 365d 23,670M 3.8% 891F 3.0% 707P

3-5 365d 34,540M 4.3% 1,480F 3.1% 1,079P

5-1 365d 29,440M 4.5% 1,322F 3.2% 953P

SIRE: Markwell Nobel-ET

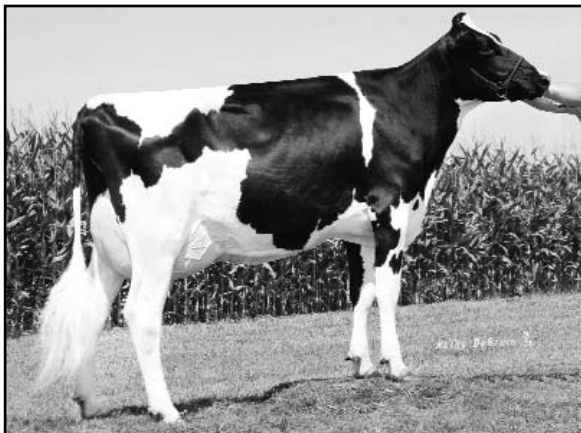
DAM: MD-Delight Strom Adeline-ET (VG-88-DOM)

2-1 365d 25,340M 4.6% 1,176F 3.4% 863P

4th Dam: MS Kingstead Chief Adeen-ET (EX-94-DOM)

3-5 310d 30,180M 4.0% 1,209F 3.4% 1,020P

- ◆ Breed elite at +2380 GTPITM
- ◆ Shottle x Goldwyn from the famed Chief Adeen family
- ◆ Huge milk, low SCS, high PL and type in one neat package



MD-MAPLE-DELL GOLD AILEY-ET (VG-85)

70 %Rel T	-2	-1	0	1	2	
STATURE						3.32 T
DAIRY FORM						3.69 O
STRENGTH						1.78 S
BODY DEPTH						2.49 D
RUMP WIDTH						2.29 W
RUMP ANGLE						1.35 S
LEGS SIDE VIEW						1.35 P
LEGS REAR VIEW						3.70 S
FOOT ANGLE						3.66 S
FEET & LEGS SCORE						2.93 H
FORE ATTACHMENT						3.97 S
REAR UDDER HEIGHT						4.71 H
UDDER CLEFT						2.53 S
UDDER DEPTH						1.92 S
FRONT TEAT PLACE						1.39 C
REAR TEAT PLACE						1.95 C
FRONT TEAT LENGTH						1.07 L

aAa: 234 DMS: 234 Born: 09/16/2007
Breeder: W. & D. Langreck & G. & J. Pagel, West Union, IA