



**7HO10072 BRIGEEN RUSSELL**  
 USA138938125 100% RHA-NA TR TV TL TD

<b>USDA Genomic Evaluation (08/09)</b>					
(Rel 74%)	+1,193Milk	% Test	Lbs.	Net Merit (Rel 70%)	+\$ 889
Protein		+ .06	+ 52	Cheese Merit	+\$ 922
Fat		+ .26	+ 113	Fluid Merit	+\$ 831
SCS 2.69 (Rel 68%)	PL +6.2 (Rel 62%)			DPR +2.4 (Rel 61%)	
<b>USDA/HA Genomic Evaluation (08/09)</b>					
	+2.59Type	Rel 69%		GTPITM +2300	
HA Composites	+2.77UDC	+1.69FLC	+1.68BD	+1.65D	
Calving Ease (%DBH) 08/09	Service Sire	4%	66% Rel		
	Daughter	5%	60% Rel		
Sire Conception Rate 08/09		- 0.7	60% Rel	395 Obs	

**REGANCREST-HHF MAC-ET (EX-92-GM)**

**MARA-THON BW MARSHALL-ET (VG-86-GM)**

**LADYS-MANOR RUBY D SHANA-ET (VG-86)**

1-11 365d 26,050M 4.0% 1,053F 3.2% 846P  
 Full Sis: Ladys-Manor Ruby D Shawn-ET (VG-87-EX-MS)  
 1-11 305d 25,140M 4.5% 1,123F 3.3% 833P

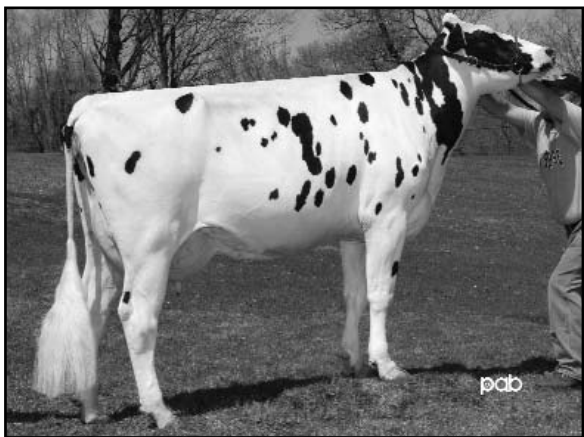
**REGANCREST RUDOLPH DENA-ET (VG-89-EX-MS-DOM)**

**PICSTON SHOTTLE-ET (GM)**

**LADYS-MANOR RUBY D-ET (EX-90-EX-MS-GMD-DOM)**

2-0 365d 31,780M 4.8% 1,536F 3.4% 1,088P  
 4-10 305d 33,960M 5.4% 1,825F 3.3% 1,135P  
 SIRE: Rickland Mandel Debut  
 DAM: Ladys-Manor Ruby Jen (EX-94-2E-EX-MS-GMD-DOM)  
 4-2 365d 46,920M 4.6% 2,141F 3.0% 1,425P

- ◆ Mac x Shottle...the breed's next golden cross
- ◆ Combines Fat, Type, PL and DPR like no other
- ◆ Sire father at Select Sires



**LADYS-MANOR RUBY D SHANA-ET (VG-86)**

