



**7HO10078 JUNIPER BOLIVER AXEL-ET**  
 USA65353731 100% RHA-NA TR TV TL TD



USDA Genomic Evaluation (08/09)					
(Rel 75%)	+1,709Milk	% Test	Lbs.	Net Merit (Rel 72%)	+\$ 617
Protein		+ .02	+ 57	Cheese Merit	+\$ 627
Fat		+ .14	+ 101	Fluid Merit	+\$ 596
SCS 2.83 (Rel 70%)	PL +2.8 (Rel 65%)			DPR -0.3 (Rel 64%)	
USDA/HA Genomic Evaluation (08/09)					
	+2.09Type	Rel 70%		GTPI™ +1959	
HA Composites	+1.61UDC	+0.40FLC	+1.30BD	+2.19D	
Calving Ease (%DBH) 08/09	Service Sire	10%	67% Rel		
	Daughter	7%	64% Rel		

**END-ROAD PVF BOLIVER-ET (EX-94-GM)**

**OUT-JOCK CHOICE AMEL-ET (VG-85-GM)**

**JUNIPER OUTSIDE ARIEL-ET (VG-89-EX-MS)**

2-0 365d 25,820M 4.7% 1,218F 3.3% 850P  
 3-4 365d 31,790M 4.4% 1,387F 3.3% 1,037P

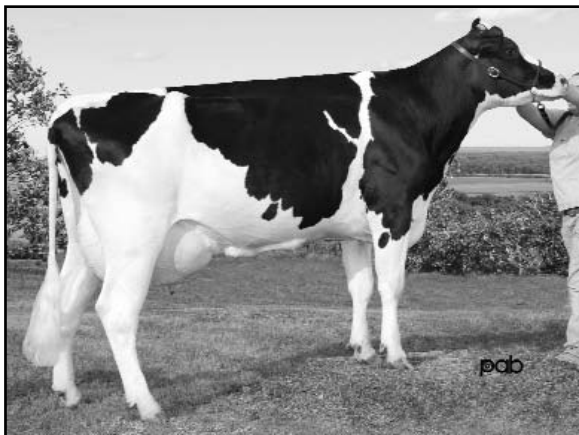
**END-ROAD MATHIE BIG BANG-ET (VG-85-DOM)**

**COMESTAR OUTSIDE-ET (GM)**

**CARTERS-CORNER MAN ALDI-ET (EX-90-2E-EX-MS-DOM)**

2-1 365d 28,160M 3.7% 1,038F 3.1% 868P 3X  
 5-8 365d 27,440M 4.1% 1,125F 3.1% 839P  
 SIRE: Ha-Ho Cubby Manfred-ET (GP-82)  
 DAM: Neu-Way Patron Allie-ET (VG-87-GMD-DOM)  
 1-11 365d 35,440M 3.9% 1,398F 3.1% 1,101P

- ◆ Boliver x Outside for a great outcross
- ◆ Elite NM\$ and over 100 pounds of fat
- ◆ From 7HO8221 ALEXANDER's cow family



**JUNIPER OUTSIDE ARIEL-ET (VG-89-EX-MS)**

	70%Rel T	-2	-1	0	1	2	
STATURE							1.45 T
DAIRY FORM							3.12 O
STRENGTH							0.74 S
BODY DEPTH							1.58 D
RUMP WIDTH							1.57 W
RUMP ANGLE							1.00 H
LEGS SIDE VIEW							1.65 S
LEGS REAR VIEW							0.46 S
FOOT ANGLE							0.71 S
FEET & LEGS SCORE							0.54 H
FORE ATTACHMENT							2.17 S
REAR UDDER HEIGHT							2.46 H
UDDER CLEFT							1.70 S
UDDER DEPTH							0.66 S
FRONT TEAT PLACE							1.42 C
REAR TEAT PLACE							1.42 C
FRONT TEAT LENGTH							0.13 L

aAa: 342 DMS: 345 Born: 02/16/2008  
 Breeder: Juniper Genetics LLC, Gray, ME