



7HO10169 REGANCREST MAC BEDFORD-ET

USA62744601 100% RHA-NA TV TL



USDA Genomic Evaluation (08/09)					
(Rel 82%)	+1,371Milk	% Test	Lbs.	Net Merit (Rel 78%)	+\$ 351
Protein		- .01	+ 37	Cheese Merit	+\$ 341
Fat		- .07	+ 32	Fluid Merit	+\$ 363
SCS 2.99 (Rel 77%)	PL +1.2 (Rel 72%)			DPR -1.3 (Rel 71%)	
USDA/HA Genomic Evaluation (08/09)					
	+4.32Type	Rel 71%	GTPI™	+1892	
HA Composites	+4.26UDC	+3.49FLC	+2.91BD	+2.71D	
Calving Ease (%DBH)	08/09	Service Sire	8%	75% Rel	
		Daughter	6%	70% Rel	
Sire Conception Rate	08/09		+ 0.5	60% Rel	396 Obs

REGANCREST-HHF MAC-ET (EX-92-GM)

MARA-THON BW MARSHALL-ET (VG-86-GM)

REGANCREST-PR BARBIE-ET (EX-92-EX-MS-GMD-DOM)

2-6 365d 31,690M 3.9% 1,237F 3.1% 990P
 DTR: Regancrest Cinderella-ET (VG-89)
 2-5 365d 32,300M 4.4% 1,437F 3.0% 968P

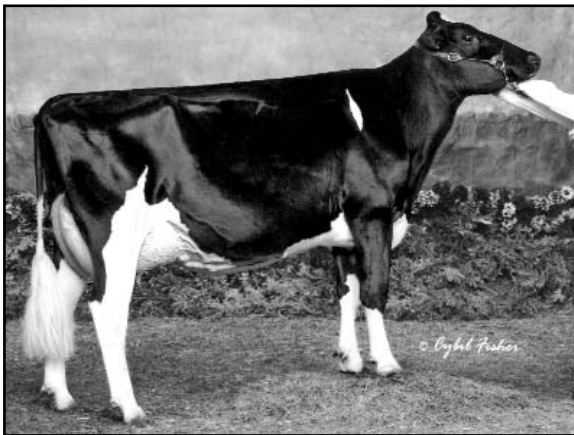
REGANCREST RUDOLPH DENA-ET (VG-89-EX-MS-DOM)

REGANCREST ELTON DURHAM-ET (EX-90-GM)

REGANCREST JUROR BRINA-ET (EX-92-EX-MS-GMD)

2-6 365d 30,090M 3.5% 1,057F 2.9% 880P
 4-4 365d 40,640M 3.6% 1,478F 2.8% 1,140P
 SIRE: Ked Juror-ET (GP-82-GM)
 DAM: Regancrest Aerostar Bert-ET (EX-90)
 5-2 365d 37,790M 3.6% 1,357F 3.0% 1,143P

- ◆ By Mac, the breed leading UDC sire x (EX-92) Barbie from the breed's highest type cow family
- ◆ Exceptional PAs for Type (+4.32) and Milk (+1,371)
- ◆ Ideal mating on Shottle daughters



	71%Rel T	-2	-1	0	1	2	
STATURE							3.78 T
DAIRY FORM							4.27 O
STRENGTH							1.66 S
BODY DEPTH							2.69 D
RUMP WIDTH							2.03 W
RUMP ANGLE							1.20 H
LEGS SIDE VIEW							0.23 P
LEGS REAR VIEW							3.66 S
FOOT ANGLE							3.59 S
FEET & LEGS SCORE							3.86 H
FORE ATTACHMENT							5.24 S
REAR UDDER HEIGHT							6.27 H
UDDER CLEFT							3.77 S
UDDER DEPTH							3.46 S
FRONT TEAT PLACE							2.50 C
REAR TEAT PLACE							2.35 C
FRONT TEAT LENGTH							0.71 L

aAa: 342 DMS: 234,123 Born: 10/12/2007
 Breeder: Regancrest Farm, Waukon, IA

REGANCREST-PR BARBIE-ET (EX-92-EX-MS-GMD-DOM)