



7H09916 BRANDT-VIEW BIGTIME-ET

USA138762896 100% RHA-NA TR TV TL TD



USDA Genomic Evaluation (08/09)					
(Rel 73%)	+2,076Milk	% Test	Lbs.	Net Merit (Rel 69%)	+\$ 747
Protein		+ .03	+ 69	Cheese Merit	+\$ 758
Fat		+ .11	+ 105	Fluid Merit	+\$ 723
SCS 2.58 (Rel 67%)	PL +3.0 (Rel 60%)			DPR -1.5 (Rel 59%)	
USDA/HA Genomic Evaluation (08/09)					
	+2.51Type	Rel 69%		GTPITM	+2149
HA Composites	+2.68UDC	+1.57FLC	+0.91BD		+1.42D
Calving Ease (%DBH)	08/09	Service Sire	7%	65% Rel	
		Daughter	6%	61% Rel	
Sire Conception Rate	08/09		+ 0.3	78% Rel	913 Obs

SANDY-VALLEY BOLTON-ET (EX-90)

LEXVOLD LUKE HERSHEL-ET (GM)

BRANDT-VIEW SHOTTLE FERN-ET (VG-86-EX-MS-DOM)

1-11 365d 38,400M 4.8% 1,834F 3.0% 1,154P
Full Sis.: Brandt-View Shottle Fig-ET (VG-85)

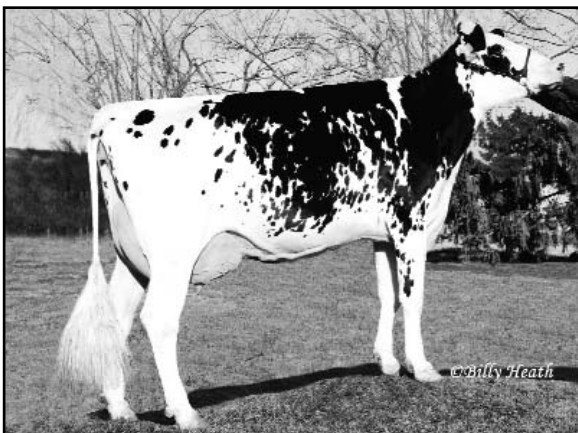
SANDY-VALLEY BLESSING-ET (VG-88-EX-MS-GMD-DOM)

PICSTON SHOTTLE-ET (GM)

BRANDT-VIEW DURHAM ALLY (VG-88-EX-MS-DOM)

1-10 365d 35,830M 3.6% 1,273F 3.2% 1,130P 3X
3-2 365d 51,500M 3.6% 1,858F 3.1% 1,612P 3X
SIRE: Regancrest Elton Durham-ET (EX-90-GM)

- ◆ Huge potential for fat percent and fat pounds
- ◆ One of Select's best for GTPi and NM\$
- ◆ Great choice for BW MARSHALL daughters and granddaughters



	69 %Rel T	-2	-1	0	1	2	
STATURE							1.00 T
DAIRY FORM							1.40 O
STRENGTH							0.69 S
BODY DEPTH							0.74 D
RUMP WIDTH							1.24 W
RUMP ANGLE							0.25 S
LEGS SIDE VIEW							1.82 S
LEGS REAR VIEW							2.28 S
FOOT ANGLE							1.86 S
FEET & LEGS SCORE							1.68 H
FORE ATTACHMENT							3.69 S
REAR UDDER HEIGHT							3.81 H
UDDER CLEFT							1.40 S
UDDER DEPTH							2.10 S
FRONT TEAT PLACE							1.44 C
REAR TEAT PLACE							1.48 C
FRONT TEAT LENGTH							1.02 L

aAa: 234 DMS: 456,345 Born: 10/13/2007
Breeder: Brandt-View Farms, Annville, PA

BRANDT-VIEW SHOTTLE FERN-ET (VG-86-EX-MS-DOM)