



7HO9961 MISSION-BELL GOLD DIENER-ET

USA138737742 100% RHA-NA TR TV TL TD



USDA Genomic Evaluation (08/09)					
(Rel 72%)	+1,304Milk	% Test	Lbs.	Net Merit (Rel 69%)	+\$ 581
Protein		+ .02	+ 43	Cheese Merit	+\$ 587
Fat		+ .12	+ 80	Fluid Merit	+\$ 568
SCS 2.75 (Rel 67%)	PL +3.0 (Rel 63%)			DPR -0.1 (Rel 62%)	
USDA/HA Genomic Evaluation (08/09)					
	+3.43Type	Rel 70%		GTPI™ +2053	
HA Composites	+2.48UDC	+2.91FLC	+3.05BD	+2.69D	
Calving Ease (%DBH)	08/09	Service Sire	7%	64% Rel	
		Daughter	4%	61% Rel	
Sire Conception Rate	08/09		- 1.0	59% Rel	379 Obs

BRAEDALE GOLDWYN (GM)

SHOREMAR JAMES (GP-81-CAN-GM)

MISSION-BELL B IRON DIRECT (EX-92-EX-MS-DOM)

2-0 365d 22,340M 3.9% 871F 3.1% 686P
 3-4 365d 36,380M 4.8% 1,739F 3.0% 1,097P

BRAEDALE BALER TWINE-ETS (VG-86-CAN)

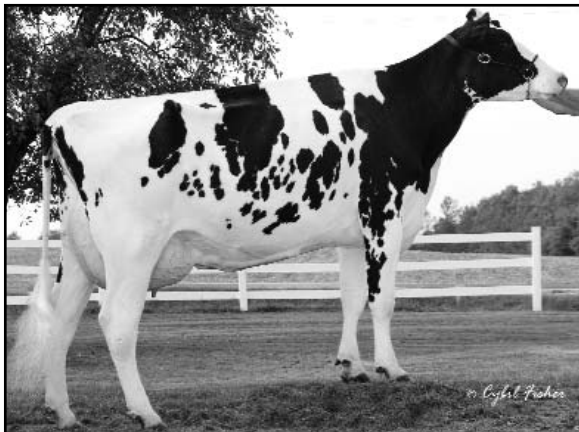
BOSS IRON-ET (GM)

MISSION-BELL OUTSIDE DASHER (EX-93-2E-EX-MS-DOM)

2-0 361d 24,690M 4.2% 1,043F 3.0% 739P
 3-1 365d 34,960M 5.4% 1,894F 3.0% 1,050P
 5-2 365d 36,760M 4.3% 1,580F 2.7% 1,008P
 6-7 305d 33,770M 4.1% 1,381F 2.9% 988P

SIRE: Comestar Outside-ET (GM)

- ◆ +2053 GTPI Goldwyn son at +3.43 PTAT and +581 NM\$
- ◆ Six generations of Excellent dams; all Excellent mammaries
- ◆ Six generations of dams over 30,000M and 4.0%F lifetime



MISSION-BELL B IRON DIRECT (EX-92-EX-MS-DOM)

	70 %Rel T	-2	-1	0	1	2	
STATURE							4.14 T
DAIRY FORM							3.35 O
STRENGTH							1.74 S
BODY DEPTH							2.43 D
RUMP WIDTH							1.83 W
RUMP ANGLE							0.59 H
LEGS SIDE VIEW							0.37 S
LEGS REAR VIEW							2.89 S
FOOT ANGLE							2.93 S
FEET & LEGS SCORE							3.39 H
FORE ATTACHMENT							2.64 S
REAR UDDER HEIGHT							3.68 H
UDDER CLEFT							2.52 S
UDDER DEPTH							1.89 S
FRONT TEAT PLACE							1.76 C
REAR TEAT PLACE							2.02 C
FRONT TEAT LENGTH							1.14 L

aAa: 234 DMS: 123,234 Born: 09/15/2007
 Breeder: W. Thomas & Jerome Jens, Sheboygan Falls, WI