

BUICK



7H012370 OCD GALAXY BUICK-ET
8403011889610 99% RHA-NA TV TL TY TD

Sire: De-Su Freddie Galaxy-ET
Dam: Redcarpet Ab Os Brookfield (VG-86-EX-MS)
MGS: De-Su OSMOND-ET (VG-88)
MGD: Westvale-Vu Mill Bridget-ET (VG-87)



REDCARPET AB OS BROOKFIELD (VG-86-EX-MS)
2-0 3X 305d 24,001M 3.5% 844F 2.8% 661P

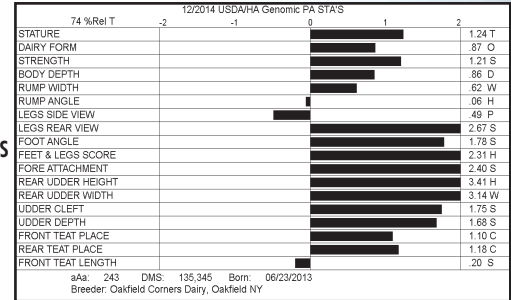


- High milk sire with balanced Type from the Barbie family
- Calving ease potential for your heifer program
- Nice complement to MOGUL daughters and granddaughters

JANUARY SUPER SAMPLERS

USDA-CDCB Genomic Eval. (12/14)
(Rel 74%) +1,531Milk % Test Lbs. Net Merit (Rel 71%) +\$ 596
Protein + .01 + 48 Cheese Merit +\$ 605
Fat - .04 + 48 CFP + 96

USDA/HA Genomic Evaluation (12/14)
+2.40Type Rel 74% GTP1® +2438
HA Composites +2.09UDC +2.11FLC +1.11BD +1.40D
SCS 2.82 (Rel 71%) PL +4.3 (Rel 69%) DPR +0.1 (Rel 66%)
Calving Ease (%DBH) 12/14 Service Sire 6.3% 60% Rel
Daughter 5.1% 52% Rel



DORCE-P



7H012483 RI-VAL-RE GPP DORCE-P-ET
USA72353510 100% RHA-NA RC PC TV TL TY TD

Sire: Kulp-Dale Golden PP-Red-ET
Dam: Ri-Val-Re Dorcy Sharrol-ET
MGS: Coyne-Farms Dorcy-ET
MGD: Ri-Val-Re Sharky Leona-ET (VG-86-DOM)



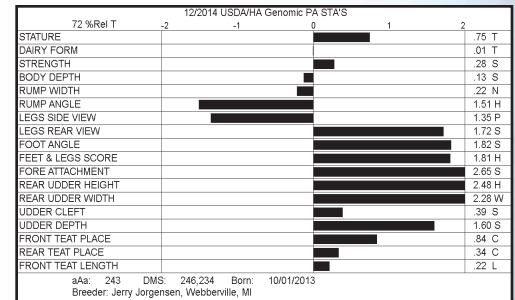
RI-VAL-RE DORCY SHARROL-ET
2-4 305d 20,121M 3.9% 787F 3.3% 674P



- Unique Polled sire - Golden-PP x Dorcy x Sharky
- Outstanding fitness traits along with high protein yield
- Expect great udders and feet and legs from moderate-statured cows

USDA-CDCB Genomic Eval. (12/14)
(Rel 74%) +495Milk % Test Lbs. Net Merit (Rel 70%) +\$ 389
Protein + .07 + 32 Cheese Merit +\$ 424
Fat - .07 + 1 CFP + 33

USDA/HA Genomic Evaluation (12/14)
+1.55Type Rel 72% GTP1 +2194
HA Composites +1.69UDC +1.76FLC +0.40BD +0.24D
SCS 2.82 (Rel 70%) PL +4.2 (Rel 68%) DPR +1.6 (Rel 65%)
Calving Ease (%DBH) 12/14 Service Sire 8.7% 57% Rel
Daughter 6.0% 51% Rel



SHIPLEY



7JE1393 MAINSTREAM R SHIPLEY-ET
USA118614539 JH1F JH2F

Sire: Tollenaars RENE 1128 Sir-ET
Dam: Mainstream Valentino Shine (VG-86%)
MGS: All Lynns Louie VALENTINO-ET
MGD: Mainstream Jace Shelly (E-91%)



MAINSTREAM VALENTINO SHINE (VG-86%)
1-10 365d 34,360M 5.1% 1,739F 3.5% 1,214P



- Unmatched pedigree and performance
- Offers positive yield deviations and high merit values
- From six generations of over 30,000M and seven generations of Excellent and Very Good dams

JANUARY SUPER SAMPLERS

USDA-CDCB Genomic Eval. (12/14)
(Rel 66%) +533Milk % Test Lbs. Net Merit (Rel 63%) +\$ 478
Protein + .05 + 28 Cheese Merit +\$ 505
Fat + .18 + 59 CFP + 87

USDA/AJCA Genomic Evaluation (12/14)
+0.9Type Rel 67% GJPI™ +179
Jersey Udder Index™ +8.98
SCS 2.79 (Rel 61%) PL +4.0 (Rel 56%) DPR +0.9 (Rel 50%)

12/2014 USDA/AJCA Genomic PA STA'S	
67 %Rel T	
STATURE	1.00 T
DAIRY FORM	.40 O
STRENGTH	.70 S
RUMP WIDTH	.70 W
RUMP ANGLE	1.10 S
LEGS SIDE VIEW	.80 P
FOOT ANGLE	.90 S
FORE ATTACHMENT	.90 S
REAR UDDER HEIGHT	.90 H
REAR UDDER WIDTH	.70 W
UDDER CLEFT	.10 W
UDDER DEPTH	.60 S
FRONT TEAT PLACE	.10 C
FRONT TEAT LENGTH	.70 S

aAa: 651 DMS: 126,246 Born: 08/22/2013
Breeder: Randy & Jana Kortus, Lynden WA