

MAY GFORCE™ SIRES

BUCKSHOT

7H015411 S-S-I RENEGADE BUCKSHOT-ET
 8403211395070 99% RHA-I TR TC TV TL TY TD
 DMS: 135,123 aAa: 324 B-Casein: A1A2 K-Casein: BB



CDCB-S Genomic Evaluation			(04/21)	
Milk	+404	78%R	Net Merit (76%R)	+\$682
Protein	+0.10%	+41	DWP\$*	+\$689
Fat	+0.22%	+79	Cheese Merit	+\$734

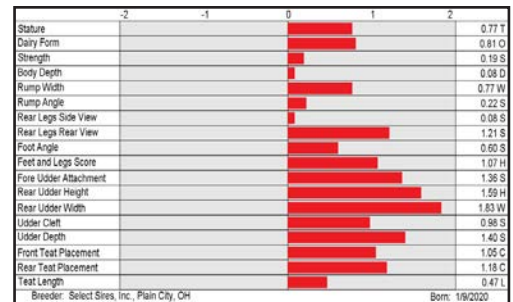
CDCB-S/HA Genomic Evaluation			(04/21)		
Type	+1.04	UDC	+1.39	FLC	+0.99
BWC	+0.07	75%R	GTPI® +2848		

Health and Fertility			(04/21)		
SCS	2.71	75%R	MAS	+0.7	68%R
LIV	+0.6	69%R	DPR	+2.0	74%R
CCR	+2.7	73%R	FI	+2.3	73%R
WT\$*	-\$27		DCE	2.1%	61%R
CW\$™	-\$9		PL	+4.2	74%R
			HCR	+2.1	71%R
			SCE	1.9%	62%R
			DSB	4.5%	59%R



MORNINGVIEW HOUSE OZZIE-ET
 Dam of BUCKSHOT

S: S-S-I PR RENEGADE-ET
 D: Morningview House Ozzie-ET
 MGS: Leaninghouse HELIX 22137-ET
 MGD: Morningview Rbcn Meadow-ET (GP-84-DOM)
 MGGS: Edg Rubicon-ET



SPRINT

7H015546 OCD ROSCOE SPRINT-ET
 8403211002851 99% RHA-I TR TP TC TV TL TY TD
 aAa: 423 B-Casein: A2A2 K-Casein: BB



CDCB-S Genomic Evaluation			(04/21)	
Milk	+480	76%R	Net Merit (74%R)	+\$747
Protein	+0.08%	+39	DWP\$*	+\$812
Fat	+0.24%	+88	Cheese Merit	+\$790

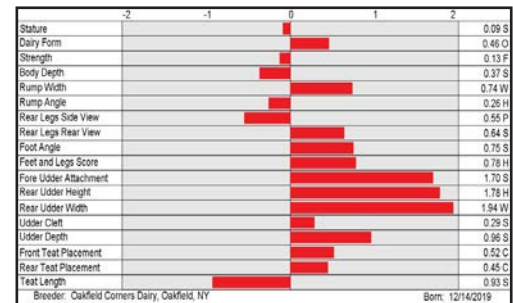
CDCB-S/HA Genomic Evaluation			(04/21)		
Type	+1.33	UDC	+1.48	FLC	+0.82
BWC	-0.23	76%R	GTPI +2900		

Health and Fertility			(04/21)		
SCS	2.88	75%R	MAS	+0.6	68%R
LIV	+3.2	69%R	DPR	+1.7	73%R
CCR	+3.0	73%R	FI	+2.2	72%R
WT\$*	+\$29		DCE	1.8%	56%R
CW\$	-\$6		PL	+5.1	73%R
			HCR	+2.9	69%R
			SCE	2.1%	62%R
			DSB	5.2%	53%R



OCD ROSCOE SPRINT-ET

S: De-Su Rocketfire ROSCOE
 D: Ocd House Superb 45042-ET (GP-83-VG-MS)
 MGS: LeaningHOUSE Helix 22137-ET
 MGD: Rocking-P Shly Superb-ET
 MGGS: Edg Rubicon-ET



YOUR SUCCESS *Our Passion.*

Phone: (614) 873-4683 ♦ www.selectsires.com

MAY GFORCE™ SIRES

RON BURGUNDY-RED

7H015601 CYCLE RON BURGUNDY-RED-ET
 8403208383914 99% RHA-I TP TC TV TL TY TD
 DMS: 123,126 aAa: 216 B-Casein: A1A2 K-Casein: AB



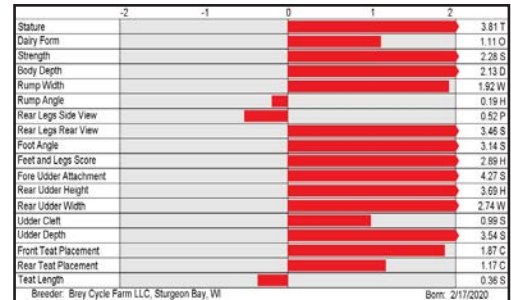
MS APPLE ARETHA-ET (EX-92-EX-MS)
 Grandam of RON BURGUNDY-RED

S: Trent-Way-Js RONALD-ET (VG-85)
 D: Cycle Jordy Alexa-Red-ET (VG-85-VG-MS)
 MGS: Cycle Mcgucci Jordy-Red
 MGD: Ms Apple Aretha-ET (EX-92-EX-MS)
 MGGS: Blondin Integral

CDCB-S Genomic Evaluation		(04/21)	
Milk	-353 77%R	Net Merit (75%R)	+\$93
Protein	+0.03% -3	DWP\$*	-\$83
Fat	+0.09% +11	Cheese Merit	+\$111

CDCB-S/HA Genomic Evaluation		(04/21)	
Type	+2.85	UDC	+2.53
FLC	+2.39	BWC	+2.49
76%R		GTPI*	+2259

Health and Fertility		(04/21)	
SCS	2.71 75%R	MAS	+3.5 68%R
LIV	-1.5 69%R	DPR	-1.0 73%R
CCR	-2.2 73%R	FI	-1.5 72%R
WT\$*	+\$66	DCE	2.7% 56%R
CW\$**	-\$11	PL	+0.3 74%R
		HCR	-0.3 69%R
		SCE	2.6% 62%R
		DSB	5.6% 53%R



STOKE

7H015613 OCD HEROIC STOKE-ET
 8403209344338 99% RHA-I TR TP TC TV TL TY TD
 DMS: 561 aAa: 234 B-Casein: A2A2 K-Casein: AB



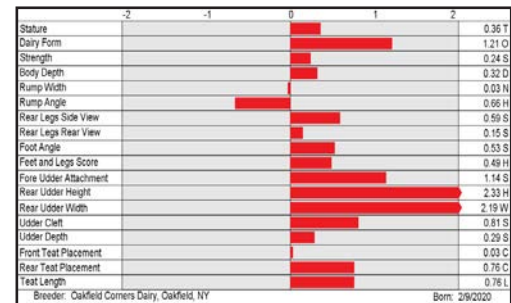
OCD HEROIC STOKE-ET

S: Pine-Tree Heroic-ET
 D: Ocd Alcove Sunsue 45938-ET
 MGS: Westcoast Alcove
 MGD: Ocd Express Sunsue 38039-ET (VG-85)
 MGGS: S-S-I Eraser P EXPRESSO-ET

CDCB-S Genomic Evaluation		(04/21)	
Milk	+1,030 76%R	Net Merit (74%R)	+\$765
Protein	+0.09% +59	DWP\$	+\$768
Fat	+0.20% +99	Cheese Merit	+\$813

CDCB-S/HA Genomic Evaluation		(04/21)	
Type	+1.30	UDC	+1.37
FLC	+0.36	BWC	-0.29
74%R		GTPI	+2909

Health and Fertility		(04/21)	
SCS	2.89 74%R	MAS	+0.7 68%R
LIV	+0.4 69%R	DPR	-0.8 72%R
CCR	+0.1 72%R	FI	-0.1 72%R
WT\$*	-\$99	DCE	2.0% 56%R
CW\$**	-\$11	PL	+3.9 73%R
		HCR	+0.5 70%R
		SCE	1.9% 60%R
		DSB	4.7% 53%R



YOUR SUCCESS *Our Passion.*

Phone: (614) 873-4683 ♦ www.selectsires.com



*Gforce and Showcase are trademarks of Select Sires Inc. CW\$ is a trademark of Zoetis Inc., and its affiliates and/or its licensors. *FeedPRO and Your Success Our Passion. are registered trademarks of Select Sires Inc. TPI is a registered trademark of Holstein Association USA. DWP\$ and WT\$ are registered trademarks of Zoetis Inc., and its affiliates and/or its licensors. Zoetis wellness values are based on April 2021 Zoetis data.

MAY GFORCE™ SIRES

CADILLAC

7H015634 KINGS-RANSOM D CADILLAC-ET
 8403208782414 99% RHA-I TR TP TC TV TL TY TD
 DMS: 126,123 aAa: 234 B-Casein: A1A2 K-Casein: AB



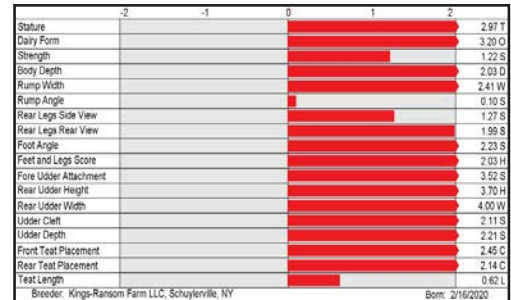
KINGS-RANSOM CANTELOUPES-ET (VG-88-EX-MS)
 Dam of CADILLAC

S: Woodcrest King DOC (EX-90)
 D: Kings-Ransom Canteloupes-ET (VG-88-EX-MS)
 MGS: Morningview Mcc KINGBOY-ET (EX-92)
 MGD: Kings-Ransom Mg Cleavage-ET (EX-95-EX-MS-DOM)
 MGGs: Mountfield Ssi Dcy MOGUL-ET (EX-93-GM)

CDCB-S Genomic Evaluation		(04/21)	
Milk	+967 80%R	Net Merit (78%R)	+\$390
Protein	+0.01% +32	DWP\$*	+\$189
Fat	+0.07% +57	Cheese Merit	+\$395

CDCB-S/HA Genomic Evaluation		(04/21)	
Type	+3.27	UDC	+2.66
FLC	+1.48	BWC	+0.63
79%R		GTP1*	+2645

Health and Fertility		(04/21)	
SCS	2.98 79%R	MAS	+0.6 72%R
LIV	-3.6 71%R	DPR	-0.5 77%R
CCR	-1.2 77%R	FI	-0.5 76%R
WT\$*	-\$99	DCE	2.0% 61%R
CW\$**	-\$42	PL	+0.3 77%R
		HCR	+0.2 74%R
		SCE	2.7% 62%R
		DSB	5.1% 59%R



TANNER

7H015642 AARDEMA TANNER-ET
 8403207538191 96% RHA-I TR TP TC TV TL TY TD
 DMS: 345,135 aAa: 165 B-Casein: A1A2 K-Casein: AA



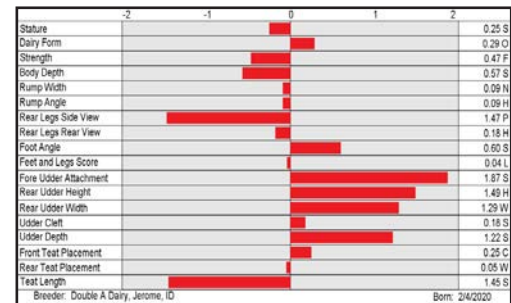
AARDEMA TANNER-ET

S: Melarry Resolve TRY ME-ET
 D: Aardema Delta 40645
 MGS: Mr Mogul Delta 1427-ET
 MGD: Aardema Cashflow 26810
 MGGs: View-Home Cashflow-ET

CDCB-S Genomic Evaluation		(04/21)	
Milk	+618 77%R	Net Merit (74%R)	+\$727
Protein	+0.06% +35	DWP\$*	+\$869
Fat	+0.14% +63	Cheese Merit	+\$760

CDCB-S/HA Genomic Evaluation		(04/21)	
Type	+0.77	UDC	+1.30
FLC	-0.03	BWC	-0.59
74%R		GTP1	+2837

Health and Fertility		(04/21)	
SCS	2.70 75%R	MAS	+3.7 68%R
LIV	+4.8 69%R	DPR	+2.8 73%R
CCR	+3.8 73%R	FI	+3.0 72%R
WT\$*	+\$79	DCE	1.9% 56%R
CW\$**	+\$72	PL	+7.8 73%R
		HCR	+0.4 69%R
		SCE	1.9% 62%R
		DSB	4.8% 53%R



YOUR SUCCESS *Our Passion.*

Phone: (614) 873-4683 ♦ www.selectsires.com

MAY GFORCE™ SIRES

ZORRO

14H015604 SANDY-VALLEY M ZORRO-ET
 8403209481210 99% RHA-I TR TP TC TV TL TY TD
 DMS: 456,246 aAa: 342 B-Casein: A1A1 K-Casein: BE



PINE-TREE MONICA PLANETA-ET (VG-86-GMD-DOM)
 Fifth dam of ZORRO

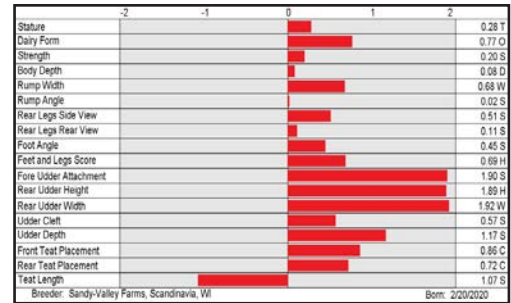


S: Plain-Knoll Si MAGNITUDE-ET
 D: Sandy-Valley Zip-ET
 MGS: Progenesis Positive
 MGD: Sandy-Valley Lime Zest-ET (VG-87-VG-MS)
 MGGS: Sandy-Valley Crackshot-ET

CDCB-S Genomic Evaluation		(04/21)	
Milk	+1,233 76%R	Net Merit (74%R)	+\$779
Protein	+0.04% +49	DWP\$*	+\$985
Fat	+0.14% +87	Cheese Merit	+\$805

CDCB-S/HA Genomic Evaluation		(04/21)	
Type	+1.15	UDC	+1.55
FLC	+0.53	BWC	-0.03
76%R		GTP1*	+2904

Health and Fertility		(04/21)	
SCS	2.69 74%R	MAS	+1.5 68%R
LIV	+2.5 68%R	DPR	+0.3 72%R
CCR	+1.4 72%R	FI	+0.7 71%R
WT\$*	+\$161	DCE	2.4% 56%R
CW\$*	+\$25	PL	+6.0 73%R
		HCR	+2.3 69%R
		SCE	2.0% 62%R
		DSB	5.3% 54%R



HOME COMING

250H015397 AOT HOMECOMING-ET
 8403210341497 100% RHA-NA TR TP TC TV TL TY TD
 aAa: 351 B-Casein: A2A2 K-Casein: BB



COOKIECUTTER DTA HABITAN-ET (VG-89-EX-MS-DOM)
 Dam of HOME COMING

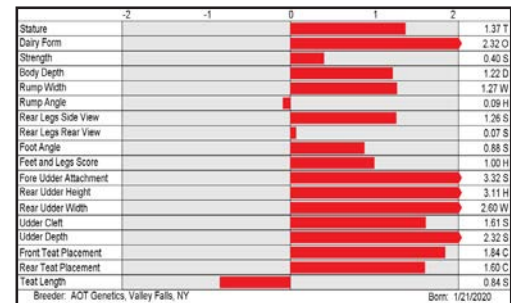


S: K-Style Tarino SPARTACUS-ET
 D: Cookiecutter Dta Habitan-ET (VG-89-EX-MS-DOM)
 MGS: Mr Mogul Delta 1427-ET
 MGD: Cookiecutter Day Haley-ET (VG-88-EX-MS-DOM)
 MGGS: Minnigan-Hills Day-ET (GM)

CDCB-S Genomic Evaluation		(04/21)	
Milk	+721 78%R	Net Merit (76%R)	+\$688
Protein	+0.06% +40	DWP\$	+\$721
Fat	+0.17% +77	Cheese Merit	+\$721

CDCB-S/HA Genomic Evaluation		(04/21)	
Type	+2.56	UDC	+2.47
FLC	+0.51	BWC	-0.17
77%R		GTP1*	+2909

Health and Fertility		(04/21)	
SCS	2.86 76%R	MAS	+1.9 69%R
LIV	+0.9 70%R	DPR	+1.7 74%R
CCR	+2.9 73%R	FI	+2.1 73%R
WT\$*	+\$9	DCE	2.0% 56%R
CW\$*	+\$38	PL	+4.4 74%R
		HCR	+3.4 70%R
		SCE	1.6% 63%R
		DSB	5.5% 54%R



YOUR SUCCESS *Our Passion.*

Phone: (614) 873-4683 ♦ www.selectsires.com



*GForce, gender SELECTED and Showcase are trademarks of Select Sires Inc. SxvudULTRA is a trademark of Inguran LLC. CW\$ is a trademark of Zoetis Inc., and its affiliates and/or its licensors. *FeedPRO, GrazingPRO and Your Success Our Passion. are registered trademarks of Select Sires Inc. TPI is a registered trademark of Holstein Association USA. DWP\$ and WT\$ are registered trademarks of Zoetis Inc., and its affiliates and/or its licensors. Zoetis wellness values are based on April 2021 Zoetis data.

MAY GFORCE™ SIREs

JX REFORM {6}

7JE1920 JX PRIMUS DORSAI REFORM {6}-ET
 8403213193842 BBR 100 JH1F JNSF
 DMS: 246,126 aAa: 324 B-Casein: A2A2 K-Casein: BB



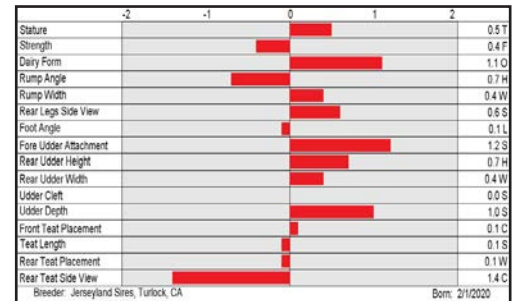
CDCB-S Genomic Evaluation			(04/21)		
Milk	+569	74%R	Net Merit (70%R)	+\$434	
Protein	+0.05%	+32	Cheese Merit	+\$459	
Fat	+0.10%	+49	CFP	+81	

CDCB-S/AJCA Genomic Evaluation			(04/21)		
Type +0.6	76%R		+3.8JUI™	GJPI™ +120	

Health and Fertility			(04/21)			CDCB/Zoetis Data		
SCS	2.98	71%R	PL	+3.0	68%R	LIV	+1.3	53%R
DPR	+1.7	64%R	HCR	+1.1	51%R	CCR	+1.9	64%R
			MAS	-1.1	53%R			



S: JX Dupat Jls Strmclsd Dorsai {5}
 D: Crosswind Lemonhead Regan 7780
 MGS: Steinhauers Samson LEMONHEAD
 MGD: Crosswind Vivaldi 6379 {4}
 MGGS: Golden Gdk Vivaldi-ET



TERRAPIN

14JE1914 TOG TERRAPIN 38448
 8403209969390 BBR 100 JH1F JNSF
 DMS: 234,345 aAa: 642 B-Casein: A2A2 K-Casein: AB



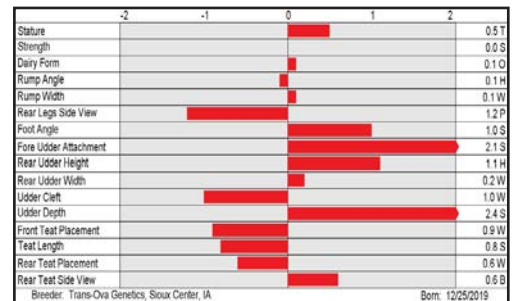
CDCB-S Genomic Evaluation			(04/21)		
Milk	+437	76%R	Net Merit (72%R)	+\$520	
Protein	+0.03%	+23	Cheese Merit	+\$536	
Fat	+0.20%	+64	CFP	+87	

CDCB-S/AJCA Genomic Evaluation			(04/21)		
Type +0.6	78%R		+11.5JUI	GJPI +128	

Health and Fertility			(04/21)			CDCB/Zoetis Data		
SCS	3.00	74%R	PL	+5.2	70%R	LIV	+1.3	56%R
DPR	+0.1	67%R	HCR	+3.8	60%R	CCR	+1.2	67%R
DWP\$® +\$260			WT\$® -\$344			CW\$™ -\$16		
M FVR	101	28%R	MAS	-0.9	56%R	ZMAS	75	46%R



S: Progenesis Skyler ET
 D: Tog Sarnen 8532-ETN
 MGS: Tog Altablitz-ET
 MGD: Tog Cara P052 7561-ET
 MGGS: Sugar Grove Valentino AXIS



YOUR SUCCESS *Our Passion.*

Phone: (614) 873-4683 ♦ www.selectsires.com



™GForce is a trademark of Select Sires Inc. JPI and JUI are trademarks of the American Jersey Cattle Association. CW\$ is a trademark of Zoetis Inc., and its affiliates and/or its licensors. ®GrazingPRO and Your Success Our Passion. are registered trademarks of Select Sires Inc. DWP\$ and WT\$ are registered trademarks of Zoetis Inc., and its affiliates and/or its licensors. Zoetis wellness values are based on April 2021 Zoetis data.

MAY GFORCE™ SIREs

REMINGTON

14JE1922 LEGENDAIRY STEVE REMINGTON
 USA173919943 BBR 100 JNSC JH1F
 DMS: 126,561 aAa: 246 B-Casein: A2A2 K-Casein: BB



CDCB-S Genomic Evaluation			(04/21)	
Milk	+443	77%R	Net Merit (74%R)	+\$502
Protein	+0.05%	+28	Cheese Merit	+\$527
Fat	+0.24%	+73	CFP	+101

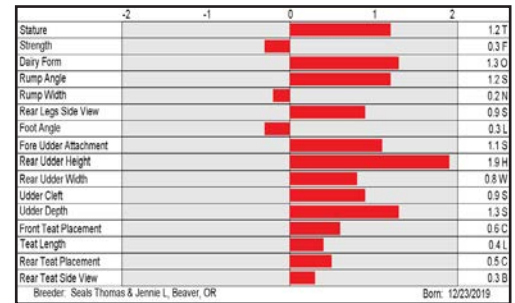


CDCB-S/AJCA Genomic Evaluation			(04/21)	
Type +1.4	80%R		+10.6JUI™	GJPI™ +124



Health and Fertility			(04/21)		CDCB/Zoetis Data			
SCS	2.97	76%R	PL	+4.2	73%R	LIV	+0.1	61%R
DPR	-1.3	70%R	HCR	+1.4	60%R	CCR	-0.9	70%R
DWP\$®	+\$467		WT\$®	-\$207		CW\$™	+\$76	
M FVR	100	41%R	MAS	-0.3	62%R	ZMAS	84	54%R

S: Cdf Irwin Steve
 D: Legendairy Chrome Rynn
 MGS: River Valley Cece CHROME-ET
 MGD: Legendairy Machete Raleigh
 MGGS: Sunset Canyon Machete-ET



LEGENDAIRY CHROME RYNN
 Dam of REMINGTON

PROAM

250JE1917 VICTORY URLACHER PROAM-ET
 8403210010771 BBR 100 JH1F JNSF
 DMS: 126,561 aAa: 261 B-Casein: A2A2 K-Casein: BB



CDCB-S Genomic Evaluation			(04/21)	
Milk	+159	74%R	Net Merit (70%R)	+\$400
Protein	+0.10%	+27	Cheese Merit	+\$438
Fat	+0.15%	+40	CFP	+67

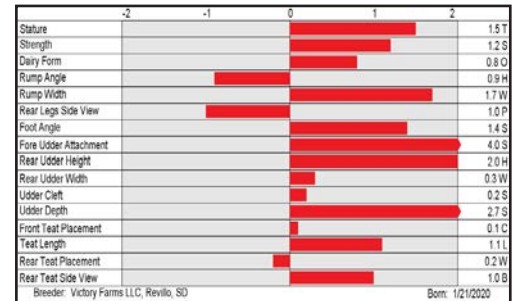


CDCB-S/AJCA Genomic Evaluation			(04/21)	
Type +1.4	76%R		+17.2JUI	GJPI +92



Health and Fertility			(04/21)		CDCB/Zoetis Data			
SCS	2.87	71%R	PL	+4.2	68%R	LIV	-0.4	53%R
DPR	-1.3	64%R	HCR	+1.7	51%R	CCR	-1.1	64%R
DWP\$	+\$532		WT\$	+\$3		CW\$	+\$7	
M FVR	101	28%R	MAS	-0.3	53%R	ZMAS	100	45%R

S: JX Faria Brothers URLACHER {6}-ET
 D: JX Victory Disco Patty 51554 {6}
 MGS: Oaklane Dazzler DISCO 2127-ET
 MGD: JX Victory Soprano 42116 {5}
 MGGS: JX Wilsonview Soprano {4}



JX VICTORY DISCO PATTY 51554 {6}
 Dam of PROAM



YOUR SUCCESS *Our Passion.*

Phone: (614) 873-4683 ♦ www.selectsires.com



™GForce is a trademark of Select Sires Inc. JPI and JUI are trademarks of the American Jersey Cattle Association. CW\$ is a trademark of Zoetis Inc., and its affiliates and/or its licensors. ®FeedPRO, RobotPRO and Your Success Our Passion. are registered trademarks of Select Sires Inc. DWP\$ and WT\$ are registered trademarks of Zoetis Inc., and its affiliates and/or its licensors. Zoetis wellness values are based on April 2021 Zoetis data.