

JUNE GFORCE™ SIRES

ZANAZ

7H017675 AR-JOY CU S-STER ZANAZ-ET

8403285538127 99% RHA-I TR TP TC TM TL TD TE
DMS: 135,345 aAa: 324 B-Casein: A1A2 K-Casein: AB

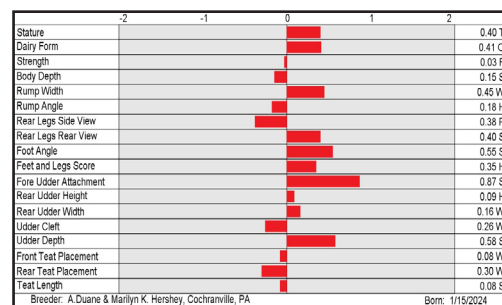


CDCB-S Genomic Evaluation			(04/25)	
Milk	+663	79%R	Net Merit (72%R)	+\$891
Protein	+0.12%	+54	DWPS*	
Fat	+0.29%	+107	Cheese Merit	+\$942

CDCB-S/HA Genomic Evaluation			(04/25)	
Type	+0.35	UDC +0.21	FLC +0.30	BWC -0.06 78%R GTPI* +3359

Health and Fertility			(04/25)	
SCS	2.83	75%R	MAS +3.7	71%R PL +4.0 75%R
LIV	+1.8	72%R	DPR -0.2	74%R HCR +0.5 74%R
CCR	+1.4	74%R	FI +0.7	74%R SCE 1.8% 63%R
DCE	2.4%	60%R	DSB 5.2%	58%R HHP\$* +\$1,048

S: OCD Trooper SHEEPSTER-ET
D: ZBW-JLP Plinko Zap-ET
MGS: Peak Altaplinko-ET
MGD: Pen-Col Zaz 898-ET
MGGS: Peak Altazazzle-ET



HARVEST

7H017775 SDG-PH HARVEST-ET

8403286265390 99% RHA-I TR TP TC TM TL TD TE
B-Casein: A1A2 K-Casein: BB

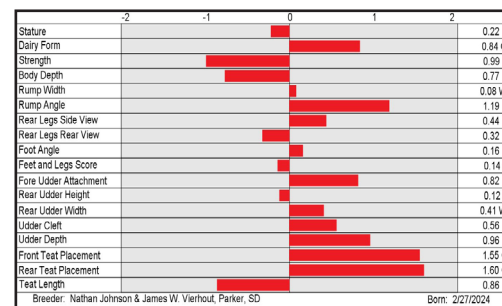


CDCB-S Genomic Evaluation			(04/25)	
Milk	+658	80%R	Net Merit (72%R)	+\$989
Protein	+0.11%	+51	DWPS*	+\$890
Fat	+0.28%	+102	Cheese Merit	+\$1,038

CDCB-S/HA Genomic Evaluation			(04/25)	
Type	+0.27	UDC +0.60	FLC -0.13	BWC -1.21 79%R GTPI* +3352

Health and Fertility			(04/25)	
SCS	2.76	75%R	MAS +1.6	70%R PL +3.9 74%R
LIV	+0.7	71%R	DPR +0.0	74%R HCR +1.6 72%R
CCR	-0.1	74%R	FI +0.6	74%R SCE 1.4% 63%R
WT\$*	-\$6		DCE 1.1%	57%R DSB 3.8% 55%R
CW\$*	-\$52		HHP\$*	+\$935

S: S-S-I Siemers GS REAPER-ET
D: SDG-PH 6998 Pndulum 7857-ET (GP-81)
MGS: Peak Pendulum-ET
MGD: SDG 2900 Pursuit 6998-ET (VG-86-VG-MS)
MGGS: Pine-Tree-I Pursuit



♀ = gender SELECTED*

🌽 = FeedPRO*

🐄 = RobotPRO*

🌿 = GrazingPRO*

YOUR SUCCESS *Our Passion.*

Phone: (614) 873-4683 ♦ www.selectsires.com

*FeedPRO, RobotPRO, GrazingPRO, HHP\$, Your Success Our Passion, and the Select Sires logo are registered trademarks of Select Sires Inc., Plain City, OH. TPI is a registered trademark of Holstein Association USA. DWPS\$ and WT\$ are registered trademarks of Zoetis Inc., and its affiliates and/or its licensors. Zoetis wellness values are based on May 2025 Zoetis data. *CW\$ is a trademark of Zoetis Inc., and its affiliates and/or its licensors. GForce and gender SELECTED are trademarks of Select Sires Inc. All gender SELECTED semen is processed using Ultraplus™ Technology. Ultraplus is a trademark of STGen LLC. Evaluations for non-conformation traits are Powered by CDCB*.

JUNE GFORCE™ SIRES

GIBEON

7H017778 WINSTAR GIBEON-ET

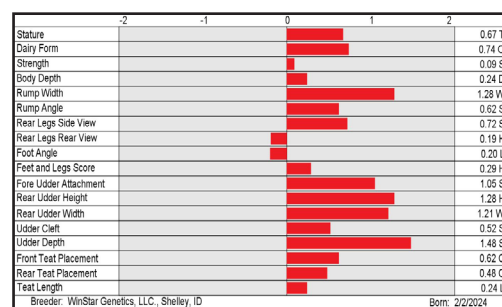
8403276319732 99% RHA-I TR TP TC TM TL TD TE
DMS: 345,234 aAa: 543 B-Casein: A2A2 K-Casein: BB



CDCB-S Genomic Evaluation			(04/25)	
Milk	+431	79%R	Net Merit (72%R)	+\$879
Protein	+0.09%	+39	DWPS*	+\$780
Fat	+0.28%	+92	Cheese Merit	+\$924

CDCB-S/HA Genomic Evaluation			(04/25)	
Type	+1.14	UDC +1.08	FLC +0.01	BWC +0.11 79%R GTPI* +3347

Health and Fertility			(04/25)	
SCS	2.58	75%R	MAS +2.9	71%R PL +5.7 74%R
LIV	+2.6	71%R	DPR -0.8	74%R HCR +2.5 72%R
CCR	+1.1	74%R	FI +0.6	74%R SCE 1.9% 63%R
WT\$*	+\$10		DCE 1.9%	57%R DSB 4.4% 55%R
CW\$*	+\$24		HHP\$*	+\$941



S: S-S-I Earlybird SUNDANCE-ET
D: Winstar Tennessee 7998-ET (GP-80)
MGS: Pine-Tree Tennessee-ET
MGD: Pine-Tree 7593 Purs 8416-ET (VG-85-VG-MS-DOM)
MGGS: Pine-Tree-I Pursuit

SUNRISE

7H017782 T-SPRUCE SUNRISE-ET

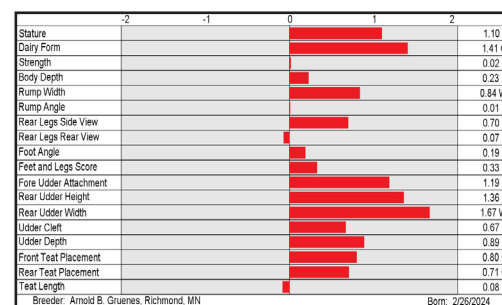
8403272446440 99% RHA-I TR TP TC TM TL TD TE
DMS: 561,135 aAa: 243 B-Casein: A1A1 K-Casein: AB



CDCB-S Genomic Evaluation			(04/25)	
Milk	+539	79%R	Net Merit (71%R)	+\$827
Protein	+0.10%	+44	DWPS*	+\$731
Fat	+0.17%	+69	Cheese Merit	+\$873

CDCB-S/HA Genomic Evaluation			(04/25)	
Type	+1.37	UDC +1.04	FLC -0.01	BWC -0.23 78%R GTPI* +3286

Health and Fertility			(04/25)	
SCS	2.69	75%R	MAS +3.0	70%R PL +5.7 74%R
LIV	+2.2	71%R	DPR +0.1	73%R HCR +1.6 72%R
CCR	+1.4	73%R	FI +1.0	73%R SCE 1.7% 63%R
WT\$*	-\$73		DCE 1.6%	57%R DSB 4.4% 55%R
CW\$*	+\$46		HHP\$*	+\$861



S: S-S-I Earlybird SUNDANCE-ET
D: T-Spruce G Miller 19523-ET
MGS: Lars-Acres GEORGE MILLER-ET
MGD: T-Spruce Monshiner 15704-ET (GP-82-DOM)
MGGS: Fly-Higher MOONSHINER-ET



YOUR SUCCESS Our Passion.

Phone: (614) 873-4683 ♦ www.selectsires.com

♀ = gender SELECTED*
 = Mastitis ResistantPRO*
 = FeedPRO*
 = RobotPRO*

*Mastitis ResistantPRO, FeedPRO, RobotPRO, HHP\$, Your Success Our Passion, and the Select Sires logo are registered trademarks of Select Sires Inc., Plain City, OH. TPI is a registered trademark of Holstein Association USA. DWPS and WT\$ are registered trademarks of Zoetis Inc., and its affiliates and/or its licensors. Zoetis wellness values are based on May 2025 Zoetis data. *CW\$ is a trademark of Zoetis Inc., and its affiliates and/or its licensors. GForce and gender SELECTED are trademarks of Select Sires Inc. All gender SELECTED semen is processed using Ultraplus* Technology. Ultraplus is a trademark of STGen LLC. Evaluations for non-conformation traits are Powered by CDCB*.

JUNE GFORCE™ SIRES

SPARX

7H017784 T-SPRUCE SPARX-ET

8403272446445 99% RHA-I TR TP TC TM TL TD TE
DMS: 234,345 aAa: 423 B-Casein: A2A2 K-Casein: AB

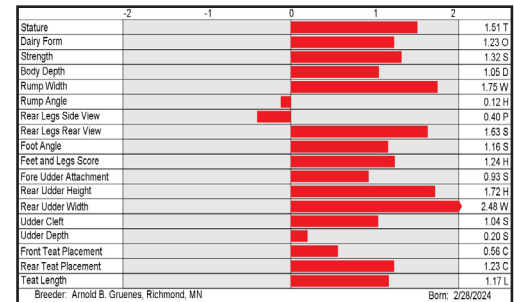


CDCB-S Genomic Evaluation			(04/25)	
Milk	+1,385	80%R	Net Merit (72%R)	+\$713
Protein	+0.04%	+57	DWPS*	+\$537
Fat	+0.12%	+91	Cheese Merit	+\$735

CDCB-S/HA Genomic Evaluation			(04/25)	
Type	+1.69	UDC +0.97	FLC +1.07	BWC +1.10 79%R GTPI* +3320

Health and Fertility			(04/25)	
SCS	2.98	76%R	MAS +1.3	72%R PL +2.4 75%R
LIV	-0.8	72%R	DPR -1.0	75%R HCR -0.6 73%R
CCR	+1.0	74%R	FI +0.2	74%R SCE 2.1% 63%R
WT\$*-\$153			DCE 2.5%	57%R DSB 4.8% 56%R
CW\$* -\$5			HHP\$*	+\$804

S: T-Spruce PHOENIX 2176-ET
D: T-Spruce Taos 16364-ET
MGS: Leaninghouse TAOS-ET
MGD: T-Spruce Lionel 13196-ET (GP-83-DOM)
MGGS: Mr T-Spruce Frazz LIONEL-ET



REFLECTION

585H017583 PINE-TREE REFLECTION-ET

8403267561543 99% RHA-I TR TP TC TM TL TD TE
DMS: 456,246 aAa: 435 B-Casein: A1A2 K-Casein: AA



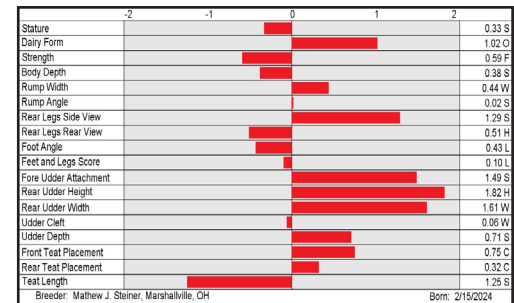
CDCB-S Genomic Evaluation			(04/25)	
Milk	+712	80%R	Net Merit (72%R)	+\$921
Protein	+0.07%	+41	DWPS*	+\$844
Fat	+0.24%	+93	Cheese Merit	+\$954

CDCB-S/HA Genomic Evaluation			(04/25)	
Type	+1.13	UDC +1.32	FLC -0.19	BWC -0.94 79%R GTPI* +3364

Health and Fertility			(04/25)	
SCS	2.75	75%R	MAS +3.4	71%R PL +5.1 74%R
LIV	+1.2	72%R	DPR -0.1	74%R HCR +2.4 72%R
CCR	+2.1	74%R	FI +1.3	74%R SCE 2.2% 63%R
WT\$*+\$27			DCE 2.2%	57%R DSB 5.1% 56%R
CW\$* -\$8			HHP\$*	+\$940

AVAILABLE ONLY IN SEXED SEMEN

S: S-S-I Earlybird SUNDANCE-ET
D: Pine-Tree 8361 Conw 8999-ET (VG-85-VG-MS)
MGS: Sandy-Valley R CONWAY-ET
MGD: Pine-Tree 7589 Lion 8361-ET
MGGS: Mr T-Spruce Frazz LIONEL-ET



- = gender SELECTED*
- = Mastitis ResistantPRO*
- = FeedPRO*
- = RobotPRO*

Mastitis ResistantPRO, FeedPRO, RobotPRO, HHP\$, Your Success Our Passion. and the Select Sires logo are registered trademarks of Select Sires Inc., Plain City, OH. TPI is a registered trademark of Holstein Association USA. DWPS and WT\$ are registered trademarks of Zoetis Inc., and its affiliates and/or its licensors. Zoetis wellness values are based on May 2025 Zoetis data. *CW\$ is a trademark of Zoetis Inc., and its affiliates and/or its licensors. GForce and gender SELECTED are trademarks of Select Sires Inc. All gender SELECTED semen is processed using Ultraplus* Technology. Ultraplus is a trademark of STGen LLC. Limitations and Conditions of Sale: gender SELECTED semen shall be used only for the single insemination of one female bovine during natural ovulation with the intent to produce a single offspring unless specifically approved on an individual customer basis by Sexing Technologies in writing. As a condition of purchasing gender SELECTED semen, the purchaser agrees that gender SELECTED semen will not be reverse sorted or re-sorted unless specifically permitted, in advance, on a case-by-case basis by Select Sires. Evaluations for non-conformation traits are Powered by CDCB*.

YOUR SUCCESS Our Passion.

Phone: (614) 873-4683 ♦ www.selectsires.com

JUNE GFORCE™ SIRES

HESEKIAH

14H017805 PEN-COL HESEKIAH-ET

8403254468444 99% RHA-I TR TP TC TM TL TD TE
aAa: 342 B-Casein: A1A2 K-Casein: AA



CDCB-S Genomic Evaluation

(04/25)

Milk	+1,034	79%R	Net Merit (72%R)	+\$955
Protein	+0.08%	+57	DWPS*	+\$891
Fat	+0.20%	+98	Cheese Merit	+\$993

CDCB-S/HA Genomic Evaluation

(04/25)

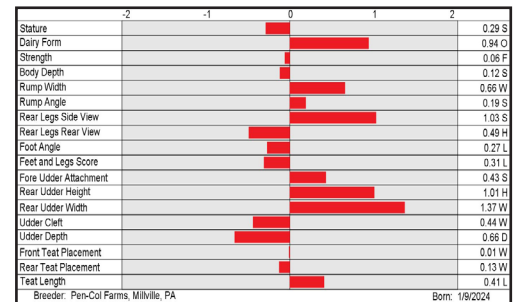
Type	+0.45	UDC	+0.49	FLC	-0.34	BWC	-0.45	78%R	GTPI*	+3335
------	-------	-----	-------	-----	-------	-----	-------	------	-------	-------

Health and Fertility

(04/25)

SCS	2.89	75%R	MAS	+1.7	71%R	PL	+4.6	74%R
LIV	+1.1	71%R	DPR	-0.8	74%R	HCR	+1.1	74%R
CCR	+1.2	74%R	FI	+0.5	74%R	SCE	2.1%	63%R
WT\$*	-\$96		DCE	2.2%	60%R	DSB	5.2%	58%R
CW\$*	+\$7		HHP\$*	+\$977				

S: OCD Trooper SHEEPSTER-ET
D: Pen-Col Frost Victoria-ET
MGS: T-Spruce G FROST BITE-ET
MGD: Pen-Col Legacy Jane-ET (VG-87-VG-MS)
MGGS: Pine-Tree CW LEGACY-ET



ARROW RC

14H017693 APRILDAY EASTON ARROW RC-ET

8403252208500 99% RHA-I RC TP TC TM TL TD TE
DMS: 135,123 aAa: 342 B-Casein: A2A2 K-Casein: BB



CDCB-S Genomic Evaluation

(04/25)

Milk	+730	79%R	Net Merit (72%R)	+\$799
Protein	+0.05%	+38	DWPS*	+\$686
Fat	+0.08%	+52	Cheese Merit	+\$824

CDCB-S/HA Genomic Evaluation

(04/25)

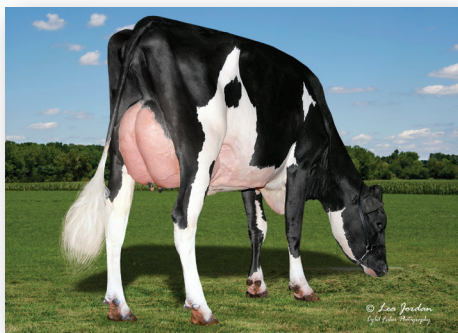
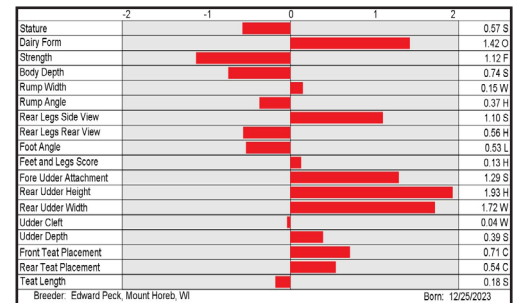
Type	+1.28	UDC	+1.41	FLC	+0.04	BWC	-1.64	79%R	GTPI*	+3204
------	-------	-----	-------	-----	-------	-----	-------	------	-------	-------

Health and Fertility

(04/25)

SCS	2.89	75%R	MAS	+1.6	71%R	PL	+4.6	74%R
LIV	+1.8	71%R	DPR	+1.0	74%R	HCR	+2.0	74%R
CCR	+1.8	74%R	FI	+1.8	74%R	SCE	1.7%	64%R
WT\$*	-\$134		DCE	2.0%	58%R	DSB	4.5%	56%R
CW\$*	+\$65		HHP\$*	+\$717				

S: Pine-Tree EASTON-ET
D: Aprilday Frbite Altitude-ET (GP-83)
MGS: T-Spruce G FROST BITE-ET
MGD: Aprilday Skiresort Aspen-ET (GP-81)
MGGS: Westcoast Skiresort

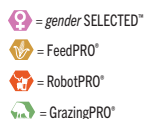


APRILDAY FRBITE ALTITUDE-ET (GP-83)
Dam of ARROW RC

SELECT SIRES

YOUR SUCCESS Our Passion.

Phone: (614) 873-4683 ♦ www.selectsires.com



*FeedPRO, RobotPRO, GrazingPRO, HHP\$, Your Success Our Passion, and the Select Sires logo are registered trademarks of Select Sires Inc., Plain City, OH. TPI is a registered trademark of Holstein Association USA. DWPS and WT\$ are registered trademarks of Zoetis Inc., and its affiliates and/or its licensors. Zoetis wellness values are based on May 2025 Zoetis data. *CW\$ is a trademark of Zoetis Inc., and its affiliates and/or its licensors. GForce and gender SELECTED are trademarks of Select Sires Inc. All gender SELECTED semen is processed using Ultraplus® Technology. Ultraplus is a trademark of STGen LLC. Evaluations for non-conformation traits are Powered by CDCB®.

JUNE GFORCE™ SIRES

ROLLSROYCE-RED

14H017809 TRENT-WAY ROLLSROYCE-RED-ET

8403278713087 99% RHA-I TP TC TM TL TD TE

DMS: 234,345 aAa: 234 B-Casein: A2A2 K-Casein: BB



TRENT-WAY-JS ROLVO-RED-ET (VG-87-VG-MS)

Grandam of ROLLSROYCE-RED

S: Melarry FIREBALL-RED-ET

D: Trent-Way Reangle-Red-ET

MGS: 3Star Oh Ranger Red-ET

MGD: Trent-Way-Js Rolvo-Red-ET (VG-87-VG-MS)

MGGS: Salvo Rdc-ET

CDCB-S Genomic Evaluation

(04/25)

Milk	+275	79%R	Net Merit (72%R)	+\$554
Protein	+0.02%	+15	DWPS*	+\$703
Fat	+0.04%	+22	Cheese Merit	+\$570

CDCB-S/HA Genomic Evaluation

(04/25)

Type	+0.61	UDC	+0.92	FLC	+0.43	BWC	-1.16	78%R	GTPI*	+2955
------	-------	-----	-------	-----	-------	-----	-------	------	-------	-------

Health and Fertility

(04/25)

SCS	2.71	75%R	MAS	+3.9	71%R	PL	+4.9	74%R
LIV	+3.1	71%R	DPR	+1.4	74%R	HCR	+3.0	72%R
CCR	+2.1	74%R	FI	+1.9	74%R	SCE	2.2%	62%R
WT\$*	+\$250		DCE	2.4%	57%R	DSB	4.2%	56%R
CW\$*	-\$28		HHP\$*	+\$536				

	-2	-1	0	1	2	
Stature						0.31 T
Dairy Form						0.89 O
Strength						1.07 F
Body Depth						0.70 S
Rump Width						0.10 W
Rump Angle						0.99 H
Rear Legs Side View						1.59 S
Rear Legs Rear View						0.36 S
Foot Angle						0.33 S
Feet and Legs Score						0.57 H
Fore Udder Attachment						1.17 S
Rear Udder Height						1.23 H
Rear Udder Width						0.22 W
Udder Cleft						0.16 S
Udder Depth						1.49 S
Front Teat Placement						0.56 C
Rear Teat Placement						0.34 C
Teat Length						0.14 S
Breeder: Trent & Kelsey Hendrickson, Blanchardville, WI						Born: 2/2/2024



YOUR SUCCESS *Our Passion.*

Phone: (614) 873-4683 ♦ www.selectsires.com

 = Mastitis ResistantPRO*

 = gender SELECTED*

Mastitis ResistantPRO, HHP\$, Your Success Our Passion, and the Select Sires logo are registered trademarks of Select Sires Inc., Plain City, OH. TPI is a registered trademark of Holstein Association USA. DWPS and WT\$ are registered trademarks of Zoetis Inc., and its affiliates and/or its licensors. Zoetis wellness values are based on May 2025 Zoetis data. *CW\$ is a trademark of Zoetis Inc., and its affiliates and/or its licensors. GForce and gender SELECTED are trademarks of Select Sires Inc. All gender SELECTED semen is processed using Ultraplus® Technology. Ultraplus is a trademark of STGen LLC. Evaluations for non-conformation traits are Powered by CDCB®.

JUNE GFORCE™ SIRES

PARKS-PP

7JE2325 S-S-I CLOVER SEISMIC PARKS-PP-ET
8403283110722 BBR 100 JH1C JNS-TF
aAa: 432 B-Casein: A2A2 K-Casein: AB

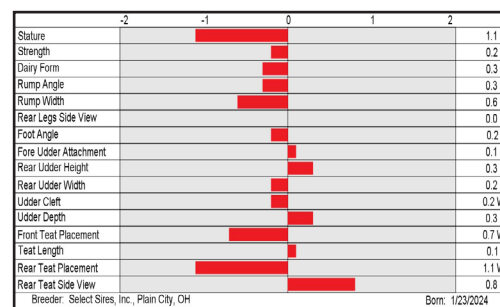


CDCB-S Genomic Evaluation			(04/25)	
Milk	+124	74%R	Net Merit (72%R)	+\$427
Protein	+0.03%	+10	Cheese Merit	+\$442
Fat	+0.17%	+39	CFP	+49

CDCB-S/AJCA Genomic Evaluation			(04/25)	
Type	+0.0	78%R	+14.3JUI*	GJPI* +138

Health and Fertility			(04/25)	
SCS	2.70	74%R	PL	+2.9 72%R
DPR	+1.0	69%R	HCR	+0.9 63%R
DWP\$*	+\$654		WT\$*	+\$142
M FVR	103	32%R	MAS	-0.3 57%R
HHP\$*	+\$437		ZMAS	108 35%R

S: Ahlem Dimitri SEISMIC-PP-ET
D: JX Cal-Mart S-S-I Skalski 63615 {6}-P-ET (VG-80%)
MGS: JX S-S-I Victory L SKALSKI {5}-P-ET
MGD: Cal-Mart Hjort Jan 9699 (VG-84%)
MGGS: Isdk Vj Hjortvangs Holmer Hjort



MCGWIRE

614JE2345 CLOVER FARMS YARDAGE MCGWIRE-ET
8403283110739 BBR 100 JH1F JNS-TF
aAa: 426 B-Casein: A2A2 K-Casein: BB



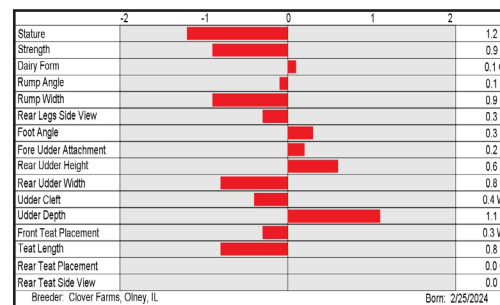
CDCB-S Genomic Evaluation			(04/25)	
Milk	+12	74%R	Net Merit (71%R)	+\$508
Protein	+0.08%	+15	Cheese Merit	+\$532
Fat	+0.18%	+36	CFP	+51

CDCB-S/AJCA Genomic Evaluation			(04/25)	
Type	+0.1	78%R	+16.2JUI*	GJPI* +163

Health and Fertility			(04/25)	
SCS	2.85	73%R	PL	+4.0 71%R
DPR	+1.5	69%R	HCR	+0.1 59%R
DWP\$*	+\$625		WT\$*	+\$131
M FVR	106	35%R	MAS	+1.8 56%R
HHP\$*	+\$585		ZMAS	108 37%R

AVAILABLE ONLY IN SEXED SEMEN

S: JX Victory Gutz YARDAGE {6}-ET
D: Ahlem Alcan Cora 64209 (VG-84%)
MGS: TOG ALCAN 38306-ET
MGD: Ahlem Pine Cora 58959-ET (VG-84%)
MGGS: JX Ahlem Frisco PINE {6}-ET



- ♀ = gender SELECTED*
- 🛡️ = Mastitis ResistantPRO*
- 🌾 = FeedPRO*
- 🤖 = RobotPRO*
- 🌿 = GrazingPRO*

Mastitis ResistantPRO, FeedPRO, RobotPRO, GrazingPRO, HHP\$, Your Success Our Passion, and the Select Sires logo are registered trademarks of Select Sires Inc., Plain City, OH. DWP\$ and WT\$ are registered trademarks of Zoetis Inc., and its affiliates and/or its licensors. Zoetis wellness values are based on May 2025 Zoetis data. "CW\$ is a trademark of Zoetis Inc., and its affiliates and/or its licensors. JPI and JUL are trademarks of the American Jersey Cattle Association. GForce and gender SELECTED are trademarks of Select Sires Inc. All gender SELECTED semen is processed using Ultraplus™ Technology. Ultraplus is a trademark of STGen LLC. Limitations and Conditions of Sale: gender SELECTED semen shall be used only for the single insemination of one female bovine during natural ovulation with the intent to produce a single offspring unless specifically approved on an individual customer basis by Sexing Technologies in writing. As a condition of purchasing gender SELECTED semen, the purchaser agrees that gender SELECTED semen will not be reverse sorted or re-sorted unless specifically permitted, in advance, on a case-by-case basis by Select Sires Evaluations in this report are Powered by CDCB.

YOUR SUCCESS *Our Passion.*

Phone: (614) 873-4683 ♦ www.selectsires.com

JUNE GFORCE™ SIRES

JX ELDERBROOK {6}

614JE2370 JX DUPAT CLEVER ELDERBROOK {6}-ET

8403242639378 BBR 100 JH1F JNS-TF

B-Casein: A2A2 K-Casein: BB



AVAILABLE ONLY IN SEXED SEMEN

S: Primus Gutz CLEVER-ET

D: JX Dupat Thrasher 23628 {5}-ET (VG-80%)

MGS: JX CDF JLS Pilgrim THRASHER {6}-ET

MGD: JX Primus Dancer Carnival 687 (VG-86%)

MGGs: JX Oak Lane Avon DANCER {3}-ET



GOFF PHAROAH CIRCUS ACT-ET (E-90%)

Fourth dam of JX ELDERBROOK {6}

CDCB-S Genomic Evaluation			(04/25)	
Milk	+642	75%R	Net Merit (73%R)	+\$453
Protein	-0.01%	+22	Cheese Merit	+\$461
Fat	+0.01%	+34	CFP	+56

CDCB-S/AJCA Genomic Evaluation			(04/25)	
Type	+0.3	78%R	+15.1JUI*	GJPI* +173

Health and Fertility			(04/25)	
SCS	2.83	74%R	PL	+4.3 72%R
DPR	+2.0	69%R	HCR	+1.2 59%R
DWP\$*	+\$499		WT\$*	+\$19
M FVR	106	33%R	MAS	+0.8 57%R
HHP\$*	+\$620		ZMAS	101 37%R

	-2	-1	0	1	2	
Stature						0.4 T
Strength						0.0 S
Dairy Form						0.2 O
Rump Angle						0.5 H
Rump Width						0.1 W
Rear Legs Side View						0.3 S
Foot Angle						0.2 S
Fore Udder Attachment						0.6 S
Rear Udder Height						0.2 H
Rear Udder Width						0.5 N
Udder Cleft						0.1 S
Udder Depth						0.8 S
Front Teat Placement						0.4 C
Teat Length						0.6 L
Rear Teat Placement						0.4 C
Rear Teat Side View						0.3 C

Breeder: Wickstrom Jersey Farms, Inc., Hilmar, CA

Born: 2/4/2024

SELECT SIRES

YOUR SUCCESS *Our Passion.*

Phone: (614) 873-4683 ♦ www.selectsires.com

♀ = gender SELECTED*

🛡️ = Mastitis ResistantPRO*

🌽 = FeedPRO*

🤖 = RobotPRO*

Mastitis ResistantPRO, FeedPRO, RobotPRO, HHP\$, Your Success Our Passion, and the Select Sires logo are registered trademarks of Select Sires Inc., Plain City, OH. DWP\$ and WT\$ are registered trademarks of Zoetis Inc., and its affiliates and/or its licensors. Zoetis wellness values are based on May 2025 Zoetis data. "CW\$" is a trademark of Zoetis Inc., and its affiliates and/or its licensors. JPI and JUL are trademarks of the American Jersey Cattle Association. GForce and gender SELECTED are trademarks of Select Sires Inc. All gender SELECTED semen is processed using Ultraplus™ Technology. Ultraplus is a trademark of STGen LLC. Limitations and Conditions of Sale: gender SELECTED semen shall be used only for the single insemination of one female bovine during natural ovulation with the intent to produce a single offspring unless specifically approved on an individual customer basis by Sexing Technologies in writing. As a condition of purchasing gender SELECTED semen, the purchaser agrees that gender SELECTED semen will not be reverse sorted or re-sorted unless specifically permitted, in advance, on a case-by-case basis by Select Sires Evaluations in this report are Powered by CDCB.

JUNE GFORCE™ SIRES

UR CREWS {0}-PP

9XD36 UR JX S-S-I VICTORY CREWS {0}-PP-ET

8403284496280 BBR 51

B-Casein: A2A2 K-Casein: BB



CDCB-M Genomic Evaluation

(04/25)

Milk	+1,099	44%R
Protein	-0.04%	+34
Fat	-0.03%	+49

Net Merit (42%R)	+\$569
Cheese Merit	+\$577
CFP	+83

CDCB-M/AJCA Genomic Evaluation

(04/25)

Type -0.5

35%R

+11.7URUI

URPI +208

Health and Fertility

(04/25)

SCS	2.70	41%R
DPR	+3.6	39%R
MAS	+1.2	30%R

PL	+3.5	38%R
HCR	+0.3	38%R
HHP\$*	+\$886	

LIV	+2.6	35%R
CCR	+3.7	38%R

S: Siemers Bed LILSMOOTH-P-ET

D: MM Popcorn Rusty 18111 {6}-P-ET (VG-84%)

MGS: Pine-Tree Popcorn-PP-ET

MGD: MM Loot Rusty 12629 {5}

MGGS: Prometedor Loot-ET

	-2	-1	0	1	2	
Stature						0.7 T
Strength						0.3 S
Dairy Form						0.1 C
Rump Angle						0.1 H
Rump Width						0.6 W
Rear Legs Side View						0.4 P
Foot Angle						0.7 S
Fore Udder Attachment						0.4 L
Rear Udder Height						0.4 L
Rear Udder Width						0.2 N
Udder Cleft						0.1 S
Udder Depth						0.1 S
Front Test Placement						0.3 W
Test Length						0.6 S
Rear Test Placement						0.0 C
Rear Test Side View						0.7 C
Breeder: Select Sires, Inc., Plain City, OH						Born: 2/1/2024



YOUR SUCCESS *Our Passion.*

Phone: (614) 873-4683 ♦ www.selectsires.com