

JUNE GFORCE™ SIRES

HARRIS-P

7H018174 COOKIECUTTER HARRIS-P-ET

8403272937193 99% RHA-I TR PC TC TM TL TD

DMS: 561,126 aAa: 534 B-Casein: A2A2 K-Casein: AB



COOKIECUTTER AL HAUSEN-ET (VG-88-EX-MS)

Third dam of HARRIS-P

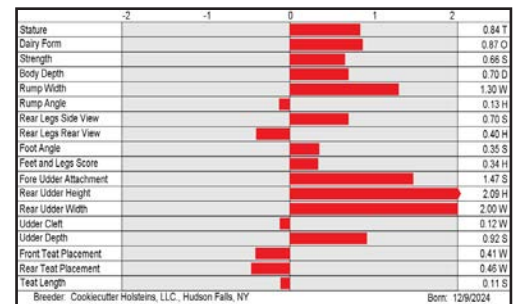
S: Aurora HOWLAND-P-ET
 D: Cookiecutter Ach Halecto-ET
 MGS: Peak Achieve
 MGD: Cookiecutter Hjmp Halise-ET
 MGGS: AOT Highjump-ET



CDCB-S Genomic Evaluation		(04/26)	
Milk	+1,118 80%R	Net Merit (72%R)	+\$859
Protein	+0.06% +53	DWPS*	+\$919
Fat	+0.18% +95	Cheese Merit	+\$889

CDCB-S/HA Genomic Evaluation		(04/26)	
Type	+1.21	UDC	+1.23
FLC	-0.01	BWC	+0.54
79%R		GTPI†	+3343

Health and Fertility		(04/26)	
SCS	2.86 76%R	MAS	+1.3 71%R
LIV	+1.0 71%R	DPR	-0.8 74%R
CCR	+0.6 74%R	FI	+0.4 74%R
WT\$	+\$118	DCE	1.8% 58%R
CWS	+\$22	HHP\$*	+\$939
PL	+3.9 74%R	HCR	+0.6 72%R
SCE	2.0% 62%R	DSB	3.7% 56%R



GRAHAM

7H018205 MELON-PATCH HOP GRAHAM-ET

USA145760645 99% RHA-I TR TP TC TM TV TL TD

DMS: 234,123 aAa: 324 B-Casein: A2A2 K-Casein: AB



GRAHAM

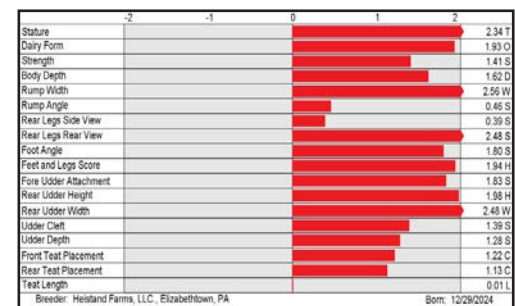
S: Siemers Fgo HOLY-P 40167-ET
 D: Pen-Col Sheepster 7037-ETS
 MGS: OCD Trooper SHEEPSTER-ET
 MGD: Pen-Col Gameday Glamour-ET
 MGGS: RMD-Dotterer SSI GAMEDAY-ET



CDCB-S Genomic Evaluation		(04/26)	
Milk	+808 79%R	Net Merit (72%R)	+\$815
Protein	+0.10% +53	DWPS*	+\$847
Fat	+0.29% +113	Cheese Merit	+\$859

CDCB-S/HA Genomic Evaluation		(04/26)	
Type	+2.27	UDC	+1.41
FLC	+1.67	BWC	+1.21
79%R		GTPI†	+3457

Health and Fertility		(04/26)	
SCS	2.85 76%R	MAS	+1.6 72%R
LIV	-0.2 72%R	DPR	-0.5 75%R
CCR	+0.3 75%R	FI	+0.3 75%R
WT\$	-\$68	DCE	1.9% 58%R
CWS	+\$66	HHP\$*	+\$963
PL	+2.8 75%R	HCR	+1.1 73%R
SCE	1.7% 63%R	DSB	4.2% 56%R



YOUR SUCCESS *Our Passion.*

(614) 873-4683 ♦ www.selectsires.com

04/26 Zoetis data. *FeedPRO, RobotPRO, HHP\$, Your Success Our Passion, and the Select Sires logo are registered trademarks of Select Sires Inc., Plain City, OH. TPI is a registered trademark of Holstein Association USA. DWPS* and WT\$ are registered trademarks of Zoetis Inc., and its affiliates and/or its licensors. *CWS is a trademark of Zoetis Inc., and its affiliates and/or its licensors. Gforce and gender SELECTED are trademarks of Select Sires Inc. All gender SELECTED semen is processed using Ultraplus™ Technology. Ultraplus is a trademark of STGen LLC. Evaluations for non-conformation traits are Powered by CDCB*.

= gender SELECTED* = FeedPRO* = RobotPRO*

JUNE GFORCE™ SIRES

PATEL-P

7H018223 SANDY-VALLEY HAB PATEL-P-ET
 8403288816303 99% RHA-I TR PC TC TM TL TD
 DMS: 126,246 aAa: 231 B-Casein: A2A2 K-Casein: BB



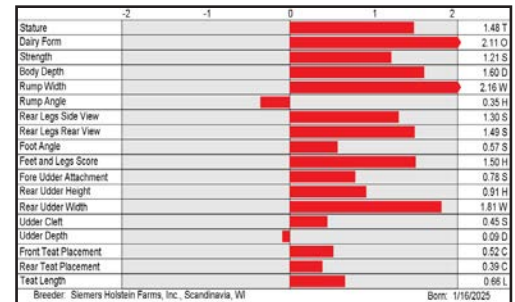
SANDY-VALLEY TENCEL-ET (EX-93-EX-MS-DOM)
 Grandam of PATEL-P

S: Siemers HABULOUS-P-ET
 D: Sandy-Valley Patsy 41254-ET (GP-80)
 MGS: Badger Aurora Rys BAMBAM-ET
 MGD: Sandy-Valley Tencel-ET (EX-93-EX-MS-DOM)
 MGGS: Leaninghouse TAOS-ET

CDCB-S Genomic Evaluation		(04/26)	
Milk	+1,019 80%R	Net Merit (72%R)	+\$674
Protein	+0.09% +59	DWPS*	+\$854
Fat	+0.11% +72	Cheese Merit	+\$718

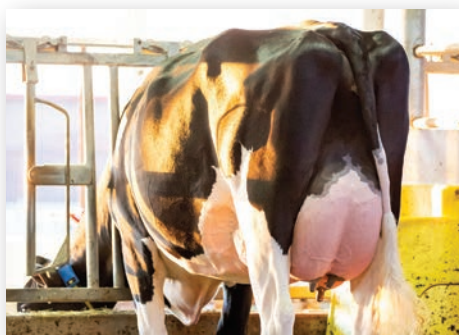
CDCB-S/HA Genomic Evaluation		(04/26)	
Type	+1.74	UDC	+0.47
FLC	+1.19	BWC	+0.72
79%R		GTPI ¹	+3303

Health and Fertility		(04/26)	
SCS	2.83 76%R	MAS	+3.3 72%R
LIV	-0.1 72%R	DPR	-1.0 74%R
CCR	+0.8 74%R	FI	+0.4 74%R
WT\$*	+\$99	DCE	1.3% 57%R
CW\$*	+\$30	HHP\$*	+\$823
PL	+3.3 74%R	HCR	+0.6 73%R
SCE	1.3% 63%R	DSB	3.8% 55%R



INTERNET

7H018239 S-S-I ROSEMARY INTERNET-ET
 8403296576709 99% RHA-I TR TP TC TM TL TD TE
 aAa: 2436 B-Casein: A1A2 K-Casein: AA



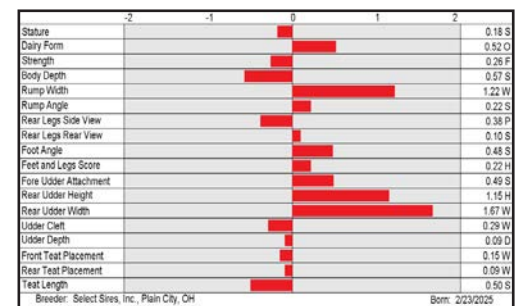
S-S-I GMDY HODELLIA 2380-ET (VG-88-VG-MS-DOM)
 Grandam of INTERNET

S: Wilra S-S-I F ROSEMARY-ET
 D: S-S-I Sheepster 6343-ET
 MGS: OCD Trooper SHEEPSTER-ET
 MGD: S-S-I Gmdy Hodelia 2380-ET (VG-88-VG-MS-DOM)
 MGGS: RMD-Dotterer SSI GAMEDAY-ET

CDCB-S Genomic Evaluation		(04/26)	
Milk	+1,625 79%R	Net Merit (72%R)	+\$1,034
Protein	+0.03% +62	DWPS*	+\$1,062
Fat	+0.14% +107	Cheese Merit	+\$1,059

CDCB-S/HA Genomic Evaluation		(04/26)	
Type	+0.94	UDC	+0.72
FLC	+0.26	BWC	-0.31
78%R		GTPI ¹	+3458

Health and Fertility		(04/26)	
SCS	2.72 75%R	MAS	+2.1 71%R
LIV	+1.5 72%R	DPR	-1.1 74%R
CCR	+0.7 74%R	FI	+0.6 74%R
WT\$*	+\$54	DCE	2.3% 58%R
CW\$*	+\$75	HHP\$*	+\$1,092
PL	+5.0 74%R	HCR	+2.6 73%R
SCE	1.7% 63%R	DSB	4.2% 56%R



YOUR SUCCESS *Our Passion.*

(614) 873-4683 ♦ www.selectsires.com

04/26 Zoetis data. *Mastitis ResistantPRO, RobotPRO, HHPs, Your Success Our Passion, and the Select Sires logo are registered trademarks of Select Sires Inc., Plain City, OH. TPI is a registered trademark of Holstein Association USA. DWPS and WT\$ are registered trademarks of Zoetis Inc., and its affiliates and/or its licensors. "CW\$" is a trademark of Zoetis Inc., and its affiliates and/or its licensors. GForce and gender SELECTED are trademarks of Select Sires Inc. All gender SELECTED semen is processed using Ultraplus™ Technology. Ultraplus is a trademark of STGen LLC. Evaluations for non-conformation traits are Powered by CDCB™.

JUNE GFORCE™ SIRES

GENESSEE

7H018264 AURORA GIANT GENESSEE-ET

8403291039849 99% RHA-I TR TP TC TM TL TD TE
DMS: 561,135 aAa: 324 B-Casein: A1A2 K-Casein: AB



CDCB-S Genomic Evaluation		(04/26)	
Milk	+292 79%R	Net Merit (72%R)	+\$1,006
Protein	+0.16% +51	DWPS*	+\$1,304
Fat	+0.44% +130	Cheese Merit	+\$1,068



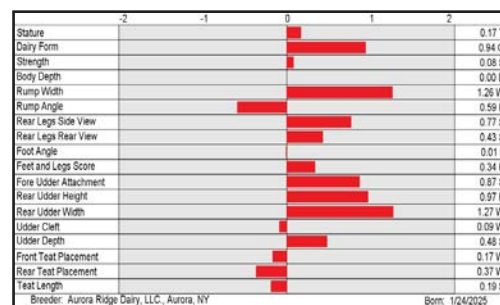
CDCB-S/HA Genomic Evaluation		(04/26)								
Type	+0.76	UDC	+0.72	FLC	+0.31	BWC	-0.13	78%R	GTPI*	+3481

Health and Fertility		(04/26)			
SCS	2.87 76%R	MAS	+2.5 71%R	PL	+4.2 74%R
LIV	+0.1 71%R	DPR	+1.0 74%R	HCR	+2.2 73%R
CCR	+2.7 74%R	FI	+2.1 74%R	SCE	1.4% 63%R
WT\$	+\$185	DCE	1.9% 57%R	DSB	3.8% 55%R
CW\$	+\$32	HHP\$*	+\$1,154		



GENESSEE

S: Beyond Letchworth GIANT-ET
D: Aurora Sheepster 26094-ET
MGS: OCD Trooper SHEEPSTER-ET
MGD: Aurora Gameday 24090-ET (VG-88-EX-MS-DOM)
MGGs: RMD-Dotterer SSI GAMEDAY-ET



MOMONEY-RED

7H018352 ELM-KAN-MFF MOMONEY-RED-ET

8403291398833 96% RHA-I PC TC TV TL TY TD
DMS: 126,561 aAa: 234 B-Casein: A2A2 K-Casein: AB



CDCB-S Genomic Evaluation		(04/26)	
Milk	+986 79%R	Net Merit (72%R)	+\$480
Protein	+0.02% +39	DWPS*	
Fat	+0.02% +47	Cheese Merit	+\$496



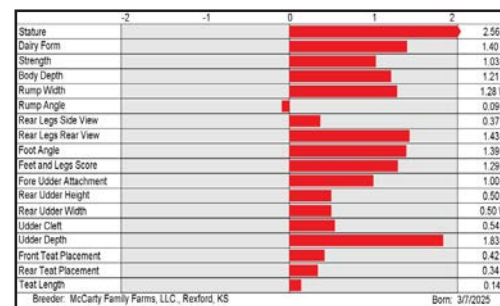
CDCB-S/HA Genomic Evaluation		(04/26)								
Type	+1.32	UDC	+0.34	FLC	+0.84	BWC	+0.99	78%R	GTPI*	+3074

Health and Fertility		(04/26)			
SCS	2.84 75%R	MAS	+1.1 72%R	PL	+2.9 74%R
LIV	-0.7 72%R	DPR	+1.2 74%R	HCR	+1.3 72%R
CCR	+1.7 74%R	FI	+1.5 74%R	SCE	1.4% 61%R
WT\$		DCE	1.5% 57%R	DSB	3.2% 55%R
CW\$		HHP\$*	+\$600		



MOMONEY-RED

S: Mo PP-Red-ET
D: Elm-Kan-MFF Esq Maeve 87723 (GP-82)
MGS: Sandy-Valley ESQUIRE-ET
MGD: Elm-Kan-MFF Perfect 67759 (VG-85)
MGGs: Siemers Rengd PERFECT-ET



YOUR SUCCESS *Our Passion.*

(614) 873-4683 ♦ www.selectsires.com

04/26 Zoetis data. *Mastitis ResistantPRO, RobotPRO, GrazingPRO, HHP\$, Your Success Our Passion. and the Select Sires logo are registered trademarks of Select Sires Inc., Plain City, OH. TPI is a registered trademark of Holstein Association USA. DWPS\$ and WT\$ are registered trademarks of Zoetis Inc., and its affiliates and/or its licensors. *CW\$ is a trademark of Zoetis Inc., and its affiliates and/or its licensors. GForce and gender SELECTED are trademarks of Select Sires Inc. All gender SELECTED semen is processed using Ultraplus™ Technology. Ultraplus is a trademark of STGen LLC. Evaluations for non-conformation traits are Powered by CDCB™.

= Mastitis ResistantPRO* = RobotPRO* = GrazingPRO*

JUNE GFORCE™ SIRES

OAKRIDGE-PP

7H018408 SIEMERS OAKRIDGE-PP-ET
 8403288817326 99% RHA-I TR PP TC TV TL TY TD
 DMS: 345,456 B-Casein: A2A2 K-Casein: BB



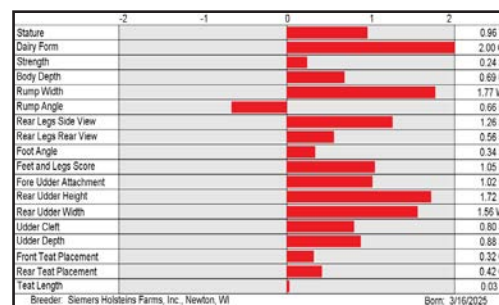
SIEMERS GD OAK 36379-ET (VG-85-VG-MS-DOM)
 Grandam of OAKRIDGE-PP

S: Aurora HOWLAND-P-ET
 D: Siemers Estn Oak 42394-ET (GP-83)
 MGS: Pine-Tree EASTON-ET
 MGD: Siemers Gd Oak 36379-ET (VG-85-VG-MS-DOM)
 MGGS: RMD-Dotterer SSI GAMEDAY-ET

CDCB-S Genomic Evaluation		(04/26)	
Milk	+788 80%R	Net Merit (72%R)	+\$713
Protein	+0.08% +47	DWPS*	+\$653
Fat	+0.14% +71	Cheese Merit	+\$749

CDCB-S/HA Genomic Evaluation		(04/26)								
Type	+1.44	UDC	+1.09	FLC	+0.73	BWC	-0.19	79%R	GTPI ¹	+3206

Health and Fertility		(04/26)			
SCS	2.87 76%R	MAS	-0.3 71%R	PL	+2.5 74%R
LIV	+1.4 72%R	DPR	-1.2 74%R	HCR	+0.8 73%R
CCR	-0.5 74%R	FI	-0.4 74%R	SCE	1.7% 63%R
WT\$*	-\$83	DCE	1.1% 58%R	DSB	2.5% 56%R
CW\$*	+\$5	HHP\$*	+\$689		



CIGAR-S

9H018147 S-S-I ICE CUBE-S CIGAR-S-ET
 8403296576575 98% RHA-I TR TP TC TM TV TL TD
 DMS: 345,456 aAa: 534 B-Casein: A2A2 K-Casein: AB



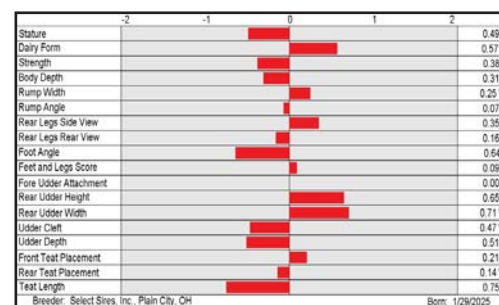
S-S-I ALPHABT 10056 1223-ET (GP-84-VG-MS)
 Third dam of CIGAR-S

S: S-S-I Frostbt ICE CUBE-S-ET
 D: S-S-I Easton 3936 6675-ET
 MGS: Pine-Tree EASTON-ET
 MGD: S-S-I Upside 1223 3936-ET (GP-80)
 MGGS: Farnear Upside-ET

CDCB-S Genomic Evaluation		(04/26)	
Milk	+527 79%R	Net Merit (72%R)	+\$751
Protein	+0.06% +34	DWPS*	+\$880
Fat	+0.27% +94	Cheese Merit	+\$781

CDCB-S/HA Genomic Evaluation		(04/26)								
Type	+0.42	UDC	+0.24	FLC	+0.10	BWC	-0.64	78%R	GTPI ¹	+3149

Health and Fertility		(04/26)			
SCS	2.80 75%R	MAS	+3.7 72%R	PL	+2.7 74%R
LIV	-0.9 72%R	DPR	-0.7 74%R	HCR	+3.3 73%R
CCR	+1.3 74%R	FI	+0.9 74%R	SCE	1.4% 62%R
WT\$*	+\$86	DCE	1.6% 58%R	DSB	4.3% 56%R
CW\$*	+\$52	HHP\$*	+\$830		



YOUR SUCCESS *Our Passion.*

(614) 873-4683 ♦ www.selectsires.com

04/26 Zoetis data. *Mastitis ResistantPRO, FeedPRO, RobotPRO, HHP\$, Your Success Our Passion, and the Select Sires logo are registered trademarks of Select Sires Inc., Plain City, OH. TPI is a registered trademark of Holstein Association USA. DWPS\$ and WT\$ are registered trademarks of Zoetis Inc., and its affiliates and/or its licensors. *CW\$ is a trademark of Zoetis Inc., and its affiliates and/or its licensors. GForce and gender SELECTED are trademarks of Select Sires Inc. All gender SELECTED semen is processed using Ultraplus™ Technology. Ultraplus is a trademark of STGen LLC. Evaluations for non-conformation traits are Powered by CDCB™.

= gender SELECTED™ = FeedPRO™ = RobotPRO™ = Mastitis ResistantPRO™

JUNE GFORCE™ SIRES

SLAYER

14H017987 OCD STAGGER SLAYER-ET
 8403283145999 99% RHA-I TR TP TC TM TL TD TE
 aAa: 543 B-Casein: A1A2 K-Casein: AA



CDCB-S Genomic Evaluation		(04/26)	
Milk	+657 79%R	Net Merit (72%R)	+\$971
Protein	+0.13% +56	DWPS*	+\$1,174
Fat	+0.33% +117	Cheese Merit	+\$1,025



Accelerated Genetics®

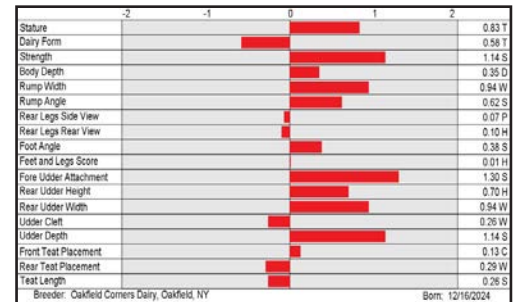
CDCB-S/HA Genomic Evaluation		(04/26)	
Type	+0.65	UDC	+0.66
FLC	-0.18	BWC	+1.47
78%R		GTPI†	+3453

Health and Fertility		(04/26)	
SCS	2.82 75%R	MAS	+2.6 71%R
LIV	+2.1 72%R	DPR	+0.5 74%R
CCR	+2.1 74%R	FI	+1.5 74%R
WT\$	+\$145	DCE	1.7% 56%R
CW\$	+\$20	HHP\$*	+\$1,174
		PL	+5.0 74%R
		HCR	+0.7 72%R
		SCE	1.4% 62%R
		DSB	3.0% 55%R



SLAYER

S: OCD Hayk STAGGER-ET
 D: OCD Lager Soy 21773-ET
 MGS: OCD Gameday LAGER-ET
 MGD: OCD Trooper Soy 66158-ET (VG-86-VG-MS-DOM)
 MGGS: Plain-Knoll Renegad TROOPER



BELHURST

14H018263 AURORA BELHURST-ET
 8403291039838 99% RHA-I TR TP TC TM TL TD TE
 aAa: 324 B-Casein: A1A2 K-Casein: AB



CDCB-S Genomic Evaluation		(04/26)	
Milk	+425 79%R	Net Merit (72%R)	+\$1,046
Protein	+0.12% +47	DWPS*	+\$1,258
Fat	+0.37% +117	Cheese Merit	+\$1,100



Accelerated Genetics®

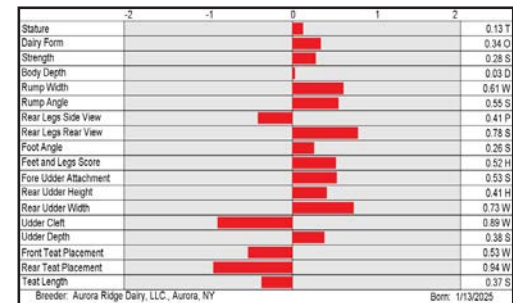
CDCB-S/HA Genomic Evaluation		(04/26)	
Type	+0.61	UDC	+0.24
FLC	+0.57	BWC	+0.18
78%R		GTPI†	+3445

Health and Fertility		(04/26)	
SCS	2.72 76%R	MAS	+3.5 71%R
LIV	+1.5 72%R	DPR	+1.1 74%R
CCR	+3.1 74%R	FI	+1.9 74%R
WT\$	+\$215	DCE	1.6% 57%R
CW\$	+\$24	HHP\$*	+\$1,174
		PL	+5.6 74%R
		HCR	+2.9 73%R
		SCE	1.2% 63%R
		DSB	3.5% 55%R



AURORA GAMEDAY 24090-ET (VG-88-EX-MS-DOM)
 Grandam of BELHURST

S: Beyond Letchworth GIANT-ET
 D: Aurora Sheepster 26094-ET
 MGS: OCD Trooper SHEEPSTER-ET
 MGD: Aurora Gameday 24090-ET (VG-88-EX-MS-DOM)
 MGGS: RMD-Dotterer SSI GAMEDAY-ET



YOUR SUCCESS *Our Passion.*

(614) 873-4683 ♦ www.selectsires.com

04/26 Zoetis data. *Mastitis ResistantPRO, FeedPRO, RobotPRO, GrazingPRO, HHP\$, Your Success Our Passion, and the Select Sires logo are registered trademarks of Select Sires Inc., Plain City, OH. TPI is a registered trademark of Holstein Association USA. DWPS and WT\$ are registered trademarks of Zoetis Inc., and its affiliates and/or its licensors. *CW\$ is a trademark of Zoetis Inc., and its affiliates and/or its licensors. GForce and gender SELECTED are trademarks of Select Sires Inc. All gender SELECTED semen is processed using Ultraplus™ Technology. Ultraplus is a trademark of STGen LLC. Evaluations for non-conformation traits are Powered by CDCB®.

= gender SELECTED* = FeedPRO* = RobotPRO* = Mastitis ResistantPRO* = GrazingPRO*

JUNE GFORCE™ SIRES

HOMAGE-P

14H018371 AURORA HOMAGE-P-ET

8403291039883 99% RHA-I TR PC TC TV TL TY TD
DMS: 561,456 aAa: 234 B-Casein: A1A2 K-Casein: BB



CDCB-S Genomic Evaluation (04/26)

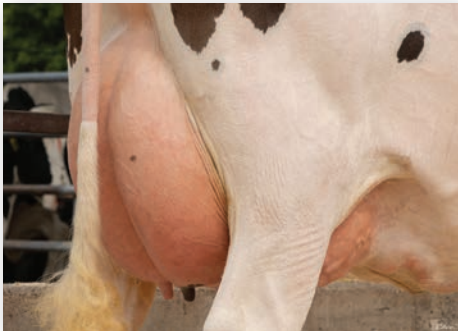
Milk	+1,089	79%R	Net Merit (72%R)	+\$910
Protein	+0.09%	+60	DWPS*	+\$1,173
Fat	+0.20%	+101	Cheese Merit	+\$952

CDCB-S/HA Genomic Evaluation (04/26)

Type	+1.27	UDC	+0.56	FLC	+0.46	BWC	-0.07	78%R	GTPI ¹	+3418
------	-------	-----	-------	-----	-------	-----	-------	------	-------------------	-------

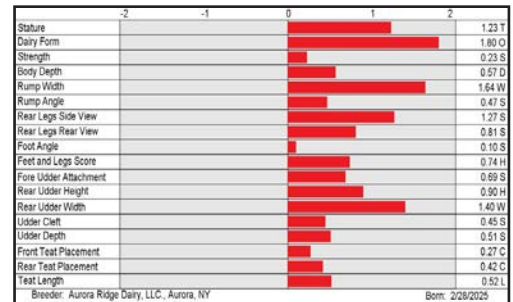
Health and Fertility (04/26)

SCS	2.81	75%R	MAS	+2.8	72%R	PL	+4.6	74%R
LIV	-0.7	72%R	DPR	-0.5	74%R	HCR	+0.6	73%R
CCR	+0.9	74%R	FI	+0.7	74%R	SCE	1.7%	63%R
WT\$	+\$173		DCE	1.8%	57%R	DSB	4.0%	56%R
CW\$	+\$30		HHP\$*	+\$999				



S: Siemers HABULOUS-P-ET
D: Aurora Sheepster 26094-ET
MGS: OCD Trooper SHEEPSTER-ET
MGD: Aurora Gameday 24090-ET (VG-88-EX-MS-DOM)
MGGs: RMD-Dotterer SSI GAMEDAY-ET

AURORA GAMEDAY 24090-ET (VG-88-EX-MS-DOM)
Grandam of HOMAGE-P



ROOSTER

250H018195 OAKFIELD HOLY-P ROOSTER-ET

8403296157119 99% RHA-I TR TP TC TM TL TD
B-Casein: A1A2 K-Casein: BE



CDCB-S Genomic Evaluation (04/26)

Milk	+1,403	80%R	Net Merit (73%R)	+\$846
Protein	+0.03%	+54	DWPS*	+\$946
Fat	+0.10%	+85	Cheese Merit	+\$867

CDCB-S/HA Genomic Evaluation (04/26)

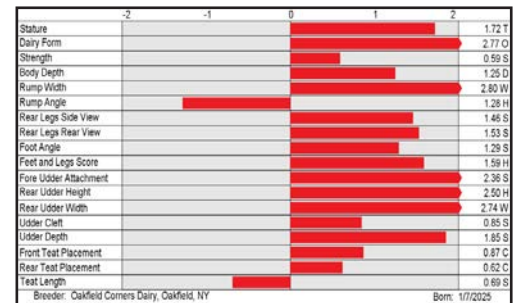
Type	+2.65	UDC	+1.85	FLC	+1.25	BWC	+0.09	79%R	GTPI ¹	+3457
------	-------	-----	-------	-----	-------	-----	-------	------	-------------------	-------

Health and Fertility (04/26)

SCS	2.79	77%R	MAS	+3.4	73%R	PL	+4.5	76%R
LIV	+1.6	72%R	DPR	-0.7	75%R	HCR	+2.0	73%R
CCR	+0.2	75%R	FI	+0.2	75%R	SCE	1.7%	63%R
WT\$	+\$108		DCE	1.8%	58%R	DSB	3.6%	56%R
CW\$	-\$3		HHP\$*	+\$919				



S: Siemers Fgo HOLY-P 40167-ET
D: OCD Captain Rae 64381-ET (EX-92-EX-MS-GMD-DOM)
MGS: Genosource Captain-ET
MGD: OCD Coffee Rae 52467-ET (VG-87-EX-MS-GMD-DOM)
MGGs: OCD Legendary COFFEE-ET



YOUR SUCCESS *Our Passion.*

(614) 873-4683 ♦ www.selectsires.com

04/26 Zoetis data. *Mastitis ResistantPRO, FeedPRO, RobotPRO, HHP\$, Your Success Our Passion, and the Select Sires logo are registered trademarks of Select Sires Inc., Plain City, OH. TPI is a registered trademark of Holstein Association USA. DWPS\$ and WT\$ are registered trademarks of Zoetis Inc., and its affiliates and/or its licensors. CW\$ is a trademark of Zoetis Inc., and its affiliates and/or its licensors. GForce and gender SELECTED are trademarks of Select Sires Inc. All gender SELECTED semen is processed using Ultraplus™ Technology. Ultraplus is a trademark of STGen LLC. Evaluations for non-conformation traits are Powered by CDCB.

JUNE GFORCE™ SIRES

GOLLEY JEAN

250H018345 ADAWAY GOLLEY JEAN-ET
8403287657437 99% RHA-I TR TP TC TV TL TY TD
aAa: 432 B-Casein: A1A2 K-Casein: AB



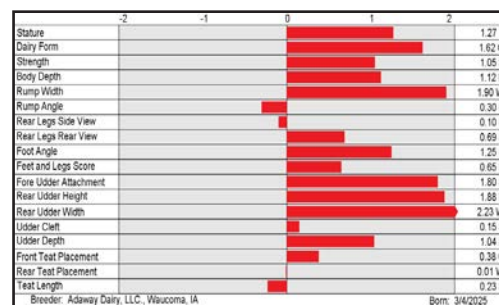
ADAWAY WAR GEAR 3601-ET
Dam of GOLLEY JEAN

CDCB-S Genomic Evaluation		(04/26)	
Milk	+947 80%R	Net Merit (72%R)	+\$961
Protein	+0.11% +61	DWPS*	+\$807
Fat	+0.36% +137	Cheese Merit	+\$1,007

CDCB-S/HA Genomic Evaluation		(04/26)	
Type	+1.84	UDC	+1.29
FLC	+0.46	BWC	+0.70
78%R		GTPI*	+3478

Health and Fertility		(04/26)	
SCS	2.97 76%R	MAS	+0.7 71%R
LIV	-0.5 72%R	DPR	-1.8 74%R
CCR	-0.3 74%R	FI	-0.5 74%R
WT\$	-\$276	DCE	2.2% 57%R
CW\$	+\$78	HHP\$*	+\$1,077
		PL	+2.8 74%R
		HCR	+1.3 73%R
		SCE	1.6% 63%R
		DSB	5.0% 56%R

S: Beyond Shpstr GOLLEY-ET
D: Adaway War Gear 3601-ET
MGS: Wilra S-S-I Gd WAR GEAR-ET
MGD: Adaway Parsly 3054-ET (VG-85-DOM)
MGGs: Siemers Twn PARSLY 32480-ET



WILCOX-P

250H018368 AURORA WILCOX-P-ET
8403291039869 99% RHA-I TR PC TC TV TL TY TD
DMS: 123,126 aAa: 423 B-Casein: A2A2 K-Casein: AB



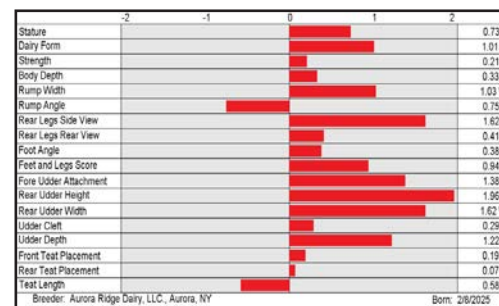
AURORA CONWAY 23551-ET (VG-88-VG-MS-DOM)
Grandam of WILCOX-P

CDCB-S Genomic Evaluation		(04/26)	
Milk	+676 80%R	Net Merit (72%R)	+\$907
Protein	+0.12% +54	DWPS*	+\$1,131
Fat	+0.26% +97	Cheese Merit	+\$960

CDCB-S/HA Genomic Evaluation		(04/26)	
Type	+1.39	UDC	+1.25
FLC	+0.64	BWC	+0.05
79%R		GTPI*	+3405

Health and Fertility		(04/26)	
SCS	2.71 76%R	MAS	+2.4 71%R
LIV	+0.8 72%R	DPR	-1.2 74%R
CCR	+0.0 74%R	FI	-0.1 74%R
WT\$	+\$141	DCE	1.7% 57%R
CW\$	+\$48	HHP\$*	+\$983
		PL	+4.6 74%R
		HCR	+1.1 73%R
		SCE	2.0% 62%R
		DSB	3.1% 55%R

S: Aurora HOWLAND-P-ET
D: Aurora Ibendigo 25596-ET (VG-85-VG-MS-DOM)
MGS: Horsens SSI Gd IBENDIGO-ET
MGD: Aurora Conway 23551-ET (VG-88-VG-MS-DOM)
MGGs: Sandy-Valley R CONWAY-ET



YOUR SUCCESS *Our Passion.*

(614) 873-4683 ♦ www.selectsires.com

04/26 Zoetis data. *Mastitis ResistantPRO, RobotPRO, HHPs, Your Success Our Passion, and the Select Sires logo are registered trademarks of Select Sires Inc., Plain City, OH. TPI is a registered trademark of Holstein Association USA. DWPS and WT\$ are registered trademarks of Zoetis Inc., and its affiliates and/or its licensors. "CW\$" is a trademark of Zoetis Inc., and its affiliates and/or its licensors. GForce and gender SELECTED are trademarks of Select Sires Inc. All gender SELECTED semen is processed using Ultraplus™ Technology. Ultraplus is a trademark of STGen LLC. Evaluations for non-conformation traits are Powered by CDCB™.

= gender SELECTED™ = Mastitis ResistantPRO® = RobotPRO®

JUNE GFORCE™ SIRES

DAGGER

744H018211 MR HULU DAGGER-ET

8403299980714 99% RHA-I TR TP TC TM TL TD

DMS: 126,123 aAa: 231 B-Casein: A1A2 K-Casein: BB



CDCB-S Genomic Evaluation

(04/26)

Milk	+1,109	81%R	Net Merit (73%R)	+\$279
Protein	-0.01%	+33	DWPs*	+\$232
Fat	-0.05%	+31	Cheese Merit	+\$284

CDCB-S/HA Genomic Evaluation

(04/26)

Type	+2.93	UDC	+2.24	FLC	+1.86	BWC	+0.52	79%R	GTPI*	+3048
------	-------	-----	-------	-----	-------	-----	-------	------	-------	-------

Health and Fertility

(04/26)

SCS	2.76	76%R	MAS	+2.2	72%R	PL	+2.1	76%R
LIV	-2.1	73%R	DPR	-1.1	76%R	HCR	+0.5	76%R
CCR	-1.0	75%R	FI	-1.0	76%R	SCE	1.7%	63%R
WT\$*	-\$67		DCE	2.1%	60%R	DSB	5.2%	59%R
CW\$*	-\$55		HHP\$*	+\$371				



S: Siemers Wolf HULU 37006-ET
 D: Duckett Lambda Danika-ET (VG-88-VG-MS)
 MGS: Farnear Delta-Lambda-ET
 MGD: S-S-I Doc Have Not 8784-ET (EX-96-EX-MS-DOM)
 MGGs: Woodcrest King DOC (EX-90)

DUCKETT LAMBDA DANIKA-ET (VG-88-VG-MS)
 Dam of DAGGER

	-2	-1	0	1	2	
Stature						2.07 T
Dairy Form						2.79 O
Strength						1.05 S
Body Depth						1.88 D
Rump Width						2.82 W
Rump Angle						0.47 H
Rear Legs Side View						0.72 S
Rear Legs Rear View						2.32 S
Foot Angle						2.18 S
Feet and Legs Score						2.12 H
Fore Udder Attachment						2.45 S
Rear Udder Height						3.32 H
Rear Udder Width						3.72 W
Udder Cleft						1.86 S
Udder Depth						1.07 S
Front Teat Placement						1.94 C
Rear Teat Placement						2.26 C
Teat Length						0.16 S
Breeder: Michael & Julie Duckett & Elmvue Farm, Rudolph, WI						Born: 10/12/2025



YOUR SUCCESS *Our Passion.*

(614) 873-4683 ♦ www.selectsires.com

04/26 Zoetis data. *Mastitis ResistantPRO, HHP\$, Your Success Our Passion, and the Select Sires logo are registered trademarks of Select Sires Inc., Plain City, OH. TPI is a registered trademark of Holstein Association USA. DWPs and WT\$ are registered trademarks of Zoetis Inc., and its affiliates and/or its licensors. Showbox Sires is a registered trademark of Showbox Sires, LLC. *CW\$ is a trademark of Zoetis Inc., and its affiliates and/or its licensors. GForce and gender SELECTED are trademarks of Select Sires Inc. All gender SELECTED semen is processed using Ultraplus™ Technology. Ultraplus is a trademark of STGen LLC. Evaluations for non-conformation traits are Powered by CDCB™.

= gender SELECTED™ = Mastitis ResistantPRO™

JUNE GFORCE™ SIRES

RANDLE

507JE2463 S-S-I VICTORY ZANDLE RANDLE-ET

8403287179947 PJA 99 JH1F JNS-TF
B-Casein: A2A2 K-Casein: BB



CDCB-S Genomic Evaluation			(04/26)	
Milk	+95	74%R	Net Merit (72%R)	+\$470
Protein	+0.10%	+22	Cheese Merit	+\$502
Fat	+0.21%	+45	CFP	+67



CDCB-S/AJCA Genomic Evaluation			(04/26)	
Type	+0.9	78%R	+18.8JUI*	GJPI* +176

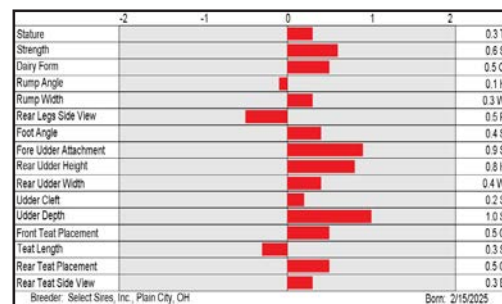
Health and Fertility			(04/26)	
SCS	2.71	74%R	PL	+4.5 72%R
DPR	+0.5	70%R	HCR	+0.2 61%R
DWP\$*	+\$708		WT\$*	+\$50
M FVR	105	32%R	MAS	-0.1 58%R
HHP\$*	+\$584		ZMAS	102 36%R
			LIV	+1.1 63%R
			CCR	+1.4 70%R
			CW\$™	+\$120

AVAILABLE ONLY IN SEXED SEMEN

S: S-S-I Clover Uncommon ZANDLE-ET
D: S-S-I Clover Duramax 11177 {6}-ET
MGS: Legendairy DURAMAX-ET
MGD: Four J Thrasher 21797 {5} (VG-82%)
MGGs: JX CDF JLS Pilgrim THRASHER {6}-ET



S-S-I CLOVER DURAMAX 11177 {6}-ET
Dam of RANDLE



DAVIS

507JE2466 S-S-I VICTORY SLAM DAVIS-ET

8403287179486 PJA 97 JH1F JNS-TF
aAa: 432 B-Casein: A2A2 K-Casein: BB



CDCB-S Genomic Evaluation			(04/26)	
Milk	+196	73%R	Net Merit (71%R)	+\$418
Protein	+0.06%	+19	Cheese Merit	+\$440
Fat	+0.11%	+32	CFP	+51

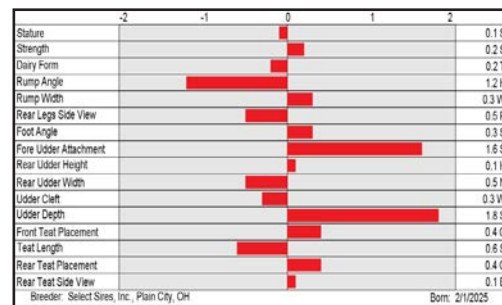


CDCB-S/AJCA Genomic Evaluation			(04/26)	
Type	+0.6	78%R	+19.4JUI*	GJPI* +169

Health and Fertility			(04/26)	
SCS	2.79	74%R	PL	+5.0 72%R
DPR	+0.3	70%R	HCR	+0.6 62%R
DWP\$*	+\$663		WT\$*	+\$186
M FVR	99	40%R	MAS	+1.4 59%R
HHP\$*	+\$552		ZMAS	112 44%R
			LIV	+1.1 63%R
			CCR	+1.5 70%R
			CW\$™	+\$48

AVAILABLE ONLY IN SEXED SEMEN

S: JX S-S-I Cobleskill Best GrandSLAM {6}-ET
D: JX S-S-I Victory Magneto 65594 {6}-ET (VG-81%)
MGS: MM Fringe MAGNETO-ET
MGD: JX S-S-I Victory Colgate 61733 {6}-ET (VG-80%)
MGGs: JX Ahlem Chrome COLGATE {6}



YOUR SUCCESS *Our Passion.*

(614) 873-4683 • www.selectsires.com

04/26 Zoetis data. *Mastitis ResistantPRO, FeedPRO, RobotPRO, GrazingPRO, HHP\$, Your Success Our Passion. and the Select Sires logo are registered trademarks of Select Sires Inc., Plain City, OH. DWPS and WT\$ are registered trademarks of Zoetis Inc., and its affiliates and/or its licensors. CW\$ is a trademark of Zoetis Inc., and its affiliates and/or its licensors. JPI and JUI are trademarks of the American Jersey Cattle Association. GForce and gender SELECTED are trademarks of Select Sires Inc. All gender SELECTED semen is processed using Ultraplus™ Technology. Ultraplus is a trademark of STGen LLC. Limitations and Conditions of Sale: gender SELECTED semen shall be used only for the single insemination of one female bovine during natural ovulation with the intent to produce a single offspring unless specifically approved on an individual customer basis by Sexing Technologies in writing. As a condition of purchasing gender SELECTED semen, the purchaser agrees that gender SELECTED semen will not be reverse sorted or re-sorted unless specifically permitted, in advance, on a case-by-case basis by Select Sires in writing. Select Sires intends to monitor the use of the gender SELECTED semen and vigorously enforce these restrictions on use. Please see <http://www.selectsires.com/designations/gendersselected.html> for additional details. Evaluations in this report are Powered by CDCB®.

= gender SELECTED™ = FeedPRO® = RobotPRO® = Mastitis ResistantPRO® = GrazingPRO®

JUNE GFORCE™ SIRES

STAN

507JE2474 S-S-I VICTORY STEARNS STAN-ET

8403287179468 PJA 100 JH1F JNS-TF
aAa: 456 B-Casein: A2A2 K-Casein: BB



ROWLEYS 2680 SKYLER 2392-ET (VG-88%)
Grandam of STAN

AVAILABLE ONLY IN SEXED SEMEN

S: Black Label Shocker STEARNS
D: Rowleys 2392 Uncommon 3519-ET (VG-80%)
MGS: Valsigna Gislev UNCOMMON-ET
MGD: Rowleys 2680 Skyler 2392-ET (VG-88%)
MGGs: Progenesis Skyler ET

CDCB-S Genomic Evaluation (04/26)

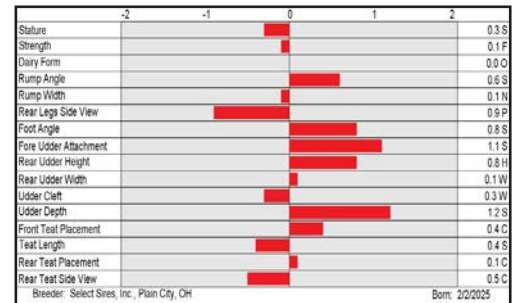
Milk	+632	77%R	Net Merit (74%R)	+\$341
Protein	-0.05%	+14	Cheese Merit	+\$338
Fat	-0.09%	+14	CFP	+28

CDCB-S/AJCA Genomic Evaluation (04/26)

Type	+0.7	80%R	+19.3JUI*	GJPI* +144
------	------	------	-----------	------------

Health and Fertility (04/26)

SCS	2.82	77%R	PL	+4.2	74%R	LIV	+1.4	64%R
DPR	+1.1	72%R	HCR	-0.5	63%R	CCR	+1.4	72%R
DWP\$*	+\$535		WT\$*	+\$148		CW\$™	+\$93	
M FVR	101	40%R	MAS	+2.2	62%R	ZMAS	110	43%R
HHP\$*	+\$499							



JX MARTINI {5}

507JE2499 JX ALL LYNNS CHATHAM MARTINI (5)-ET

8403284853412 PJA 96 JH1F JNSF
aAa: 342 B-Casein: A2A2 K-Casein: BB



ROWLEYS 2680 SKYLER 2392-ET (VG-88%)
Grandam of STAN

AVAILABLE ONLY IN SEXED SEMEN

S: JX Primus Enzo CHATHAM {4}-ET
D: JX Jer-Z-Boyz Nicklaus Mara 83719 {5} (VG-82%)
MGS: Victory Thrasher NICKLAUS-ET
MGD: JX Jer-Z-Boyz Patron Mara 67180 {4} (VG-81%)
MGGs: JX Sexing Marlo Patron {3}-ET

CDCB-S Genomic Evaluation (04/26)

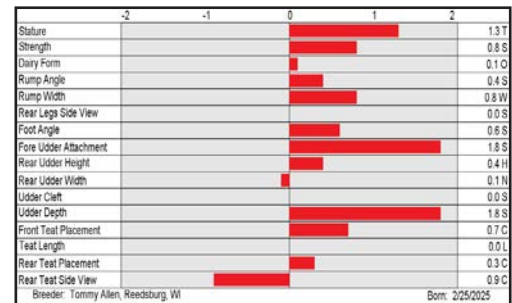
Milk	+399	78%R	Net Merit (75%R)	+\$434
Protein	+0.04%	+22	Cheese Merit	+\$451
Fat	+0.15%	+50	CFP	+72

CDCB-S/AJCA Genomic Evaluation (04/26)

Type	+0.7	80%R	+20.3JUI*	GJPI* +183
------	------	------	-----------	------------

Health and Fertility (04/26)

SCS	2.86	77%R	PL	+3.5	75%R	LIV	+1.4	65%R
DPR	+1.5	73%R	HCR	+2.3	65%R	CCR	+2.0	73%R
DWP\$*	+\$817		WT\$*	+\$127		CW\$™	+\$117	
M FVR	101	41%R	MAS	+0.8	64%R	ZMAS	112	44%R
HHP\$*	+\$640							



YOUR SUCCESS *Our Passion.*

(614) 873-4683 • www.selectsires.com

04/26 Zoetis data. *Mastitis ResistantPRO, FeedPRO, RobotPRO, HHP\$, Your Success Our Passion, and the Select Sires logo are registered trademarks of Select Sires Inc., Plain City, OH. DWP\$ and WT\$ are registered trademarks of Zoetis Inc., and its affiliates and/or its licensors. ™CW\$ is a trademark of Zoetis Inc., and its affiliates and/or its licensors. JPI and JUI are trademarks of the American Jersey Cattle Association. GForce and gender SELECTED are trademarks of Select Sires Inc. All gender SELECTED semen is processed using Ultraplus™ Technology. Ultraplus is a trademark of STGen LLC. Limitations and Conditions of Sale: gender SELECTED semen shall be used only for the single insemination of one female bovine during natural ovulation with the intent to produce a single offspring unless specifically approved on an individual customer basis by Sexing Technologies in writing. As a condition of purchasing gender SELECTED semen, the purchaser agrees that gender SELECTED semen will not be reverse sorted or re-sorted unless specifically permitted, in advance, on a case-by-case basis by Select Sires in writing. Select Sires intends to monitor the use of the gender SELECTED semen and vigorously enforce these restrictions on use. Please see <http://www.selectsires.com/designations/gendersselected.html> for additional details. Evaluations in this report are Powered by CDCB®.

JUNE GFORCE™ SIRES

SOLOMAN-P

507JE2505 DUTCH HOLLOW SOLOMAN-P-ET
 8403292211071 PJA 98 JH1F JNS-TF
 DMS: 126,123 aAa: 354 B-Casein: A2A2 K-Casein: AB



DUTCH HOLLOW JAMMER CHANT-P-ET (VG-86%)
 Dam of SOLOMAN-P

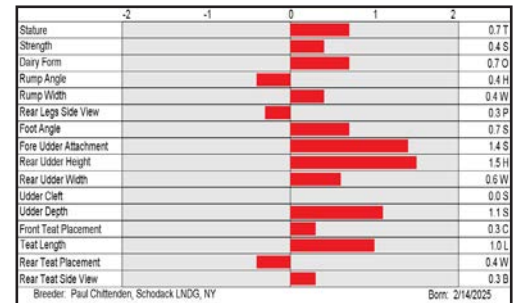
AVAILABLE ONLY IN SEXED SEMEN

S: JX S-S-I Cobleskill Best GrandSLAM {6}-ET
 D: Dutch Hollow Jammer Chant-P-ET (VG-86%)
 MGS: Cal-Mart Jammer-ET
 MGD: Dutch Hollow Chief Cheerful-P (E-92%)
 MGGs: JX River Valley Chief {6}-ET

CDCB-S Genomic Evaluation			(04/26)	
Milk	+682	74%R	Net Merit (72%R)	+\$529
Protein	+0.05%	+35	Cheese Merit	+\$554
Fat	+0.11%	+56	CFP	+91

CDCB-S/AJCA Genomic Evaluation			(04/26)	
Type	+1.0	78%R	+21.4JUI*	GJPI* +184

Health and Fertility			(04/26)					
SCS	2.78	74%R	PL	+3.3	72%R	LIV	+0.7	63%R
DPR	-0.3	70%R	HCR	+0.0	62%R	CCR	+0.6	70%R
DWP\$*	+\$727		WT\$*	+\$59		CW\$™	+\$50	
M FVR	97	37%R	MAS	-1.1	60%R	ZMAS	105	41%R
HHP\$*	+\$611							



YOUR SUCCESS *Our Passion.*

(614) 873-4683 ♦ www.selectsires.com

04/26 Zoetis data. *FeedPRO, RobotPRO, HHP\$, Your Success Our Passion, and the Select Sires logo are registered trademarks of Select Sires Inc., Plain City, OH. DWP\$ and WT\$ are registered trademarks of Zoetis Inc., and its affiliates and/or its licensors. *CW\$ is a trademark of Zoetis Inc., and its affiliates and/or its licensors. JPI and JUI are trademarks of the American Jersey Cattle Association. GForce and gender SELECTED are trademarks of Select Sires Inc. All gender SELECTED semen is processed using Ultraplus™ Technology. Ultraplus is a trademark of STGen LLC. Limitations and Conditions of Sale: gender SELECTED semen shall be used only for the single insemination of one female bovine during natural ovulation with the intent to produce a single offspring unless specifically approved on an individual customer basis by Sexing Technologies in writing. As a condition of purchasing gender SELECTED semen, the purchaser agrees that gender SELECTED semen will not be reverse sorted or re-sorted unless specifically permitted, in advance, on a case-by-case basis by Select Sires in writing. Select Sires intends to monitor the use of the gender SELECTED semen and vigorously enforce these restrictions on use. Please see <http://www.selectsires.com/designations/gendersselected.html> for additional details. Evaluations in this report are Powered by CDCB®.