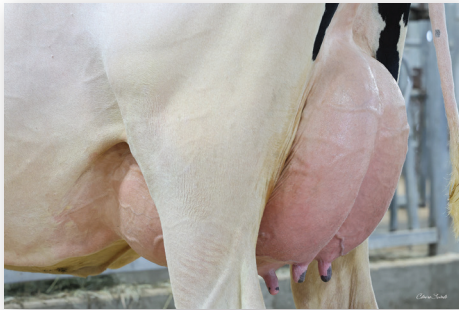


# JULY GFORCE™ SIRES

## WALBONA

**7H018122 S-S-I KINGDOM WALBONA-ET**  
 8403296576633 99% RHA-I TR TP TC TM TL TD TE  
 DMS: 561,456 B-Casein: A1A2 K-Casein: AB

CDCB-S Genomic Evaluation			(04/26)	
Milk	+537	80%R	Net Merit (72%R)	+\$1,028
Protein	+0.13%	+53	DWPS*	+\$1,265
Fat	+0.36%	+118	Cheese Merit	+\$1,087

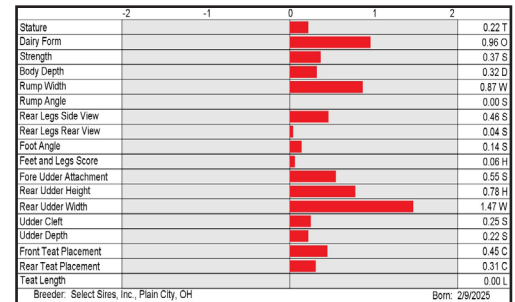


S: OCD Kahn KINGDOM-ET  
 D: Pine-Tree Beyond Sp 5980-ET (VG-85-VG-MS-DOM)  
 MGS: OCD Trooper SHEEPSTER-ET  
 MGD: Pine-Tree 8361 Engi 9339-ET  
 MGGS: Pine-Tree Engineer-ET

*PINE-TREE BEYOND SP 5980-ET (VG-85-VG-MS-DOM)*  
 Dam of WALBONA

CDCB-S/HA Genomic Evaluation						(04/26)				
Type	+1.05	UDC	+0.70	FLC	+0.01	BWC	+0.04	79%R	GTPI <sup>1</sup>	+3461

Health and Fertility			(04/26)					
SCS	2.67	76%R	MAS	+4.3	72%R	PL	+5.1	74%R
LIV	+1.3	72%R	DPR	-0.5	74%R	HCR	+1.8	73%R
CCR	+0.9	74%R	FI	+0.8	74%R	SCE	1.7%	63%R
WT\$	+\$189		DCE	1.8%	57%R	DSB	3.4%	56%R
CW\$	+\$29		HHP\$*	+\$1,170				



## LOCO

**7H018207 PENN-ENGLAND LOCO-ET**  
 8403286883778 99% RHA-I TR TP TC TM TL TD  
 DMS: 456,561 aAa: 342 B-Casein: A1A2 K-Casein: BB

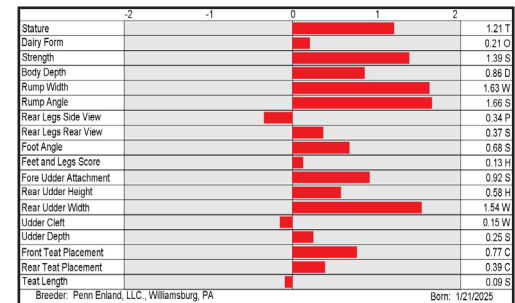
CDCB-S Genomic Evaluation			(04/26)	
Milk	+1,120	80%R	Net Merit (72%R)	+\$911
Protein	+0.09%	+62	DWPS*	+\$1,034
Fat	+0.20%	+102	Cheese Merit	+\$957



CDCB-S/HA Genomic Evaluation						(04/26)				
Type	+0.76	UDC	+0.48	FLC	-0.06	BWC	+1.53	79%R	GTPI <sup>1</sup>	+3473

Health and Fertility			(04/26)					
SCS	2.71	76%R	MAS	+3.6	72%R	PL	+5.2	74%R
LIV	+0.4	72%R	DPR	+1.6	74%R	HCR	+1.2	73%R
CCR	+3.6	74%R	FI	+2.4	74%R	SCE	1.5%	63%R
WT\$	+\$115		DCE	1.5%	57%R	DSB	3.9%	56%R
CW\$	+\$14		HHP\$*	+\$1,190				

S: OCD Hayk STAGGER-ET  
 D: Penn-England Lehigh20677-ET (DOM)  
 MGS: OCD Trooper SHEEPSTER-ET  
 MGD: Penn-England Lehigh18775-ET (VG-87-VG-MS-DOM)  
 MGGS: Peak Wheelhouse-ET



**YOUR SUCCESS** *Our Passion.*

(614) 873-4683 ♦ www.selectsires.com

04/26 Zoetis data. \*Mastitis ResistantPRO, FeedPRO, HHP\$, Your Success Our Passion, and the Select Sires logo are registered trademarks of Select Sires Inc., Plain City, OH. TPI is a registered trademark of Holstein Association USA. DWPS\$ and WT\$ are registered trademarks of Zoetis Inc., and its affiliates and/or its licensors. \*CW\$ is a trademark of Zoetis Inc., and its affiliates and/or its licensors. GForce and gender SELECTED are trademarks of Select Sires Inc. All gender SELECTED semen is processed using Ultraplus™ Technology. Ultraplus is a trademark of STGen LLC. Evaluations for non-conformation traits are Powered by CDCB™.

# JULY GFORCE™ SIRES

## VINCENT-P

**7H018283 BERRYRIDGE S M VINCENT-P-ET**  
8403288817210 99% RHA-I TR PC TC TM TL TD TE  
aAa: 351 B-Casein: A2A2 K-Casein: AB

CDCB-S Genomic Evaluation			(04/26)		
Milk	+1,262	79%R	Net Merit (72%R)	+\$948	
Protein	+0.05%	+55	DWPS*	+\$860	
Fat	+0.21%	+109	Cheese Merit	+\$973	

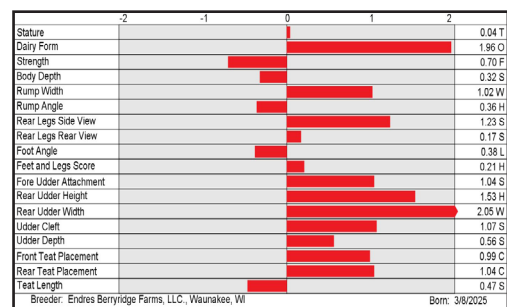


**HORSENS SSI-BR GMDY 4920-ET (EX-91-EX-MS-DOM)**  
Grandam of VINCENT-P

S: S-S-I Sheepster MICAN-ET  
D: Berryridge Chew-P 5723-P-ET  
MGS: Penn-England CHEW-P-ET  
MGD: Horsens SSI-BR Gmdy 4920-ET (EX-91-EX-MS-DOM)  
MGGs: Rmd-Dotterer SSI GAMEDAY-ET

CDCB-S/HA Genomic Evaluation						(04/26)				
Type	+1.27	UDC	+1.34	FLC	+0.14	BWC	-1.27	78%R	GTPI <sup>1</sup>	+3364

Health and Fertility			(04/26)					
SCS	2.97	75%R	MAS	-0.4	71%R	PL	+3.9	74%R
LIV	-0.4	72%R	DPR	-1.4	74%R	HCR	+0.9	73%R
CCR	+0.0	74%R	FI	-0.4	74%R	SCE	1.2%	63%R
WT\$ <sup>2</sup>	-\$191		DCE	1.7%	57%R	DSB	4.0%	56%R
CW\$ <sup>2</sup>	+\$2		HHP\$ <sup>2</sup>	+\$875				



## INTERVAL

**7H018300 S-S-I KINGDOM INTERVAL-ET**  
8403296576789 99% RHA-I TR TP TC TM TL TD TE  
aAa: 534 B-Casein: A2A2 K-Casein: AB

CDCB-S Genomic Evaluation			(04/26)		
Milk	+1,532	79%R	Net Merit (72%R)	+\$1,107	
Protein	+0.04%	+61	DWPS*	+\$1,265	
Fat	+0.18%	+113	Cheese Merit	+\$1,131	

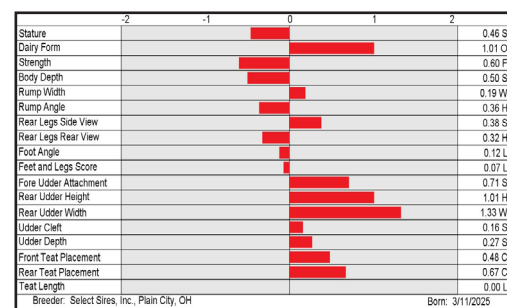


**PINE-TREE 8361 ENGI 9339-ET**  
Grandam of INTERVAL

S: OCD Kahn KINGDOM-ET  
D: Pine-Tree Beyond Sp 6127-ET  
MGS: OCD Trooper SHEEPSTER-ET  
MGD: Pine-Tree 8361 Engi 9339-ET  
MGGs: Pine-Tree Engineer-ET

CDCB-S/HA Genomic Evaluation						(04/26)				
Type	+0.82	UDC	+0.94	FLC	-0.04	BWC	-1.02	78%R	GTPI <sup>1</sup>	+3457

Health and Fertility			(04/26)					
SCS	2.88	75%R	MAS	+2.2	72%R	PL	+5.3	74%R
LIV	+1.9	72%R	DPR	-1.5	74%R	HCR	+2.9	73%R
CCR	+0.2	74%R	FI	+0.1	74%R	SCE	1.6%	63%R
WT\$ <sup>2</sup>	+\$113		DCE	1.5%	58%R	DSB	3.9%	56%R
CW\$ <sup>2</sup>	+\$68		HHP\$ <sup>2</sup>	+\$1,093				



**YOUR SUCCESS** *Our Passion.*

(614) 873-4683 ♦ www.selectsires.com

04/26 Zoetis data. \*RobotPRO, HHP\$, Your Success Our Passion, and the Select Sires logo are registered trademarks of Select Sires Inc., Plain City, OH. TPI is a registered trademark of Holstein Association USA. DWPS\$ and WT\$ are registered trademarks of Zoetis Inc., and its affiliates and/or its licensors. \*CW\$ is a trademark of Zoetis Inc., and its affiliates and/or its licensors. GForce and gender SELECTED are trademarks of Select Sires Inc. All gender SELECTED semen is processed using Ultraplus™ Technology. Ultraplus is a trademark of STGen LLC. Evaluations for non-conformation traits are Powered by CDCB™.

# JULY GFORCE™ SIRES

## GRYFFINDOR-P

**7H018320 S-S-I GRYFFINDOR-P-ET**  
8403302280476 99% RHA-I TR PC TC TM TL TD TE  
aAa: 234 B-Casein: A2A2 K-Casein: BB

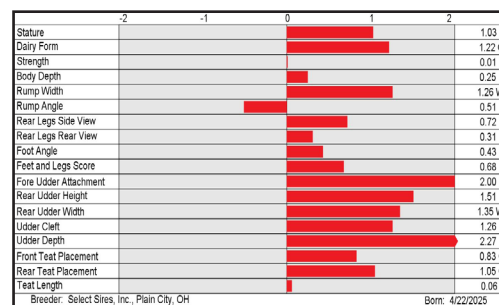
CDCB-S Genomic Evaluation		(04/26)	
Milk	+385 80%R	Net Merit (72%R)	+\$878
Protein	+0.11% +41	DWPS*	+\$1,074
Fat	+0.29% +94	Cheese Merit	+\$926



CDCB-S/HA Genomic Evaluation		(04/26)								
Type	+1.61	UDC	+1.56	FLC	+0.39	BWC	-0.10	79%R	GTPI*	+3376

Health and Fertility		(04/26)			
SCS	2.69 75%R	MAS	+2.5 71%R	PL	+4.4 74%R
LIV	+0.9 72%R	DPR	+0.3 74%R	HCR	+2.4 73%R
CCR	+2.0 74%R	FI	+1.2 74%R	SCE	1.4% 64%R
WT\$	+\$253	DCE	2.0% 58%R	DSB	4.0% 56%R
CW\$	-\$13	HHP\$*	+\$970		

S: OCD Sheepster EEYORE-ET  
D: Majr 600 Chew 900-P-ET  
MGS: Penn-England CHEW-P-ET  
MGD: Pine-Tree 7831 Lion 600-ET  
MGGS: Mr T-Spruce Frazz LIONEL-ET



## HOMBREW

**7H018374 COOKIECUTTER HOMBREW-ET**  
8403272937324 99% RHA-I TR TP TC TV TL TY TD  
B-Casein: A2A2 K-Casein: AB

CDCB-S Genomic Evaluation		(04/26)	
Milk	+2,068 80%R	Net Merit (72%R)	+\$943
Protein	+0.05% +81	DWPS*	+\$1,030
Fat	+0.05% +100	Cheese Merit	+\$972



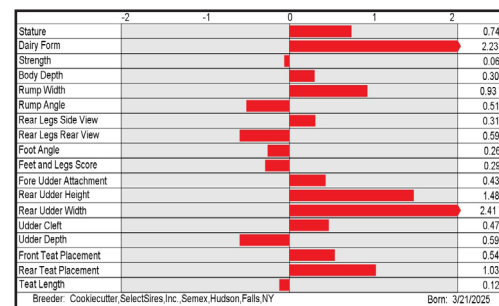
CDCB-S/HA Genomic Evaluation		(04/26)								
Type	+0.99	UDC	+0.81	FLC	-0.56	BWC	-0.74	79%R	GTPI*	+3474

Health and Fertility		(04/26)			
SCS	2.85 75%R	MAS	+0.8 72%R	PL	+4.0 75%R
LIV	-2.0 73%R	DPR	-0.8 74%R	HCR	+1.7 73%R
CCR	+1.6 74%R	FI	+1.0 74%R	SCE	1.4% 64%R
WT\$	-\$49	DCE	2.3% 57%R	DSB	5.0% 56%R
CW\$	+\$24	HHP\$*	+\$1,030		



**COOKIECUTTER RUBI HOMEY-ET (EX-91-2E-EX-MS-DOM)**  
Fourth dam of HOMBREW

S: S-S-I Sheepster MICAN-ET  
D: Cookiecutter Inl Homilet-ET (GP-84)  
MGS: Mr T-Spruce Frazz LIONEL-ET  
MGD: Cookiecutter Drv Hovelja-ET (VG-86-VG-MS)  
MGGS: Kings-Ransom Legacy DRIVE-ET



**YOUR SUCCESS** *Our Passion.*

(614) 873-4683 ♦ www.selectsires.com

04/26 Zoetis data. \*Mastitis ResistantPRO, FeedPRO, HHP\$, Your Success Our Passion, and the Select Sires logo are registered trademarks of Select Sires Inc., Plain City, OH. TPI is a registered trademark of Holstein Association USA. DWPS and WT\$ are registered trademarks of Zoetis Inc., and its affiliates and/or its licensors. "CW\$" is a trademark of Zoetis Inc., and its affiliates and/or its licensors. GForce and gender SELECTED are trademarks of Select Sires Inc. All gender SELECTED semen is processed using Ultraplus™ Technology. Ultraplus is a trademark of STGen LLC. Evaluations for non-conformation traits are Powered by CDCB™.

= Mastitis ResistantPRO = gender SELECTED = FeedPRO

# JULY GFORCE™ SIRES

## LAKE EFFECT

**7H018386 SHELAND MIC LAKE EFFECT-ET**  
 8403297821576 99% RHA-I TR TP TC TV TL TY TD  
 B-Casein: A2A2 K-Casein: AB



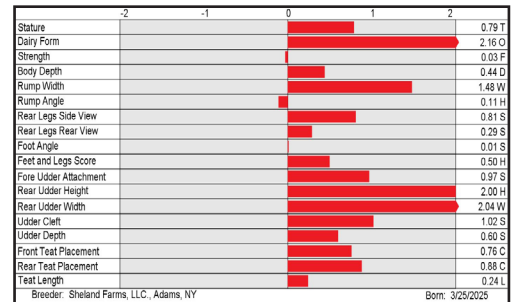
CDCB-S Genomic Evaluation		(04/26)	
Milk	+1,529 79%R	Net Merit (72%R)	+\$940
Protein	+0.06% +66	DWPS*	+\$1,087
Fat	+0.21% +122	Cheese Merit	+\$973



CDCB-S/HA Genomic Evaluation		(04/26)								
Type	+1.45	UDC	+1.29	FLC	+0.26	BWC	-0.57	78%R	GTPI†	+3442

Health and Fertility		(04/26)			
SCS	2.77 75%R	MAS	+2.3 71%R	PL	+2.7 74%R
LIV	-3.3 72%R	DPR	-2.4 74%R	HCR	+0.7 73%R
CCR	-1.5 74%R	FI	-1.1 74%R	SCE	1.1% 64%R
WT\$* +\$30		DCE	1.9% 57%R	DSB	4.8% 56%R
CW\$* +\$62		HHP\$*	+\$1,011		

S: S-S-I Sheepster MICAN-ET  
 D: Sheland Easton Lucinda-ET  
 MGS: Pine-Tree EASTON-ET  
 MGD: Sheland Elon Lilac-ET  
 MGGS: S-S-I Spartacus ELON-ET



## SCEPTER

**7H018429 SDG-PH SCEPTER-ET**  
 8403296334303 99% RHA-I TR  
 DMS: 234,246 aAa: 423 B-Casein: A1A2 K-Casein: AB



CDCB-S Genomic Evaluation		(04/26)	
Milk	+1,664 79%R	Net Merit (72%R)	+\$1,147
Protein	+0.04% +66	DWPS*	+\$1,214
Fat	+0.18% +118	Cheese Merit	+\$1,175

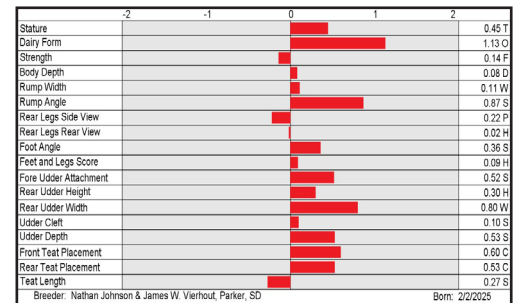


CDCB-S/HA Genomic Evaluation		(04/26)								
Type	+0.63	UDC	+0.42	FLC	-0.02	BWC	-0.50	78%R	GTPI†	+3460

Health and Fertility		(04/26)			
SCS	2.74 75%R	MAS	+2.3 71%R	PL	+5.5 74%R
LIV	+2.5 71%R	DPR	-2.0 74%R	HCR	+0.7 73%R
CCR	-1.0 74%R	FI	-0.8 74%R	SCE	1.4% 63%R
WT\$* +\$50		DCE	1.5% 57%R	DSB	4.3% 56%R
CW\$* +\$35		HHP\$*	+\$1,144		



S: OCD Kahn KINGDOM-ET  
 D: SDG-PH 7857 Sheep 8002-ET  
 MGS: OCD Trooper SHEEPSTER-ET  
 MGD: SDG-PH 6998 Pndulum 7857-ET (VG-85-VG-MS)  
 MGGS: Peak Pendulum-ET



SDG 2900 PURSUIT 6998-ET (VG-86-VG-MS-DOM)  
 Third dam of SCEPTER



**YOUR SUCCESS** *Our Passion.*

(614) 873-4683 ♦ www.selectsires.com

04/26 Zoetis data. \*Mastitis ResistantPRO, RobotPRO, HHPs, Your Success Our Passion, and the Select Sires logo are registered trademarks of Select Sires Inc., Plain City, OH. TPI is a registered trademark of Holstein Association USA. DWPS and WT\$ are registered trademarks of Zoetis Inc., and its affiliates and/or its licensors. "CW\$" is a trademark of Zoetis Inc., and its affiliates and/or its licensors. GForce and gender SELECTED are trademarks of Select Sires Inc. All gender SELECTED semen is processed using Ultraplus™ Technology. Ultraplus is a trademark of STGen LLC. Evaluations for non-conformation traits are Powered by CDCB™.

= Mastitis ResistantPRO\* = gender SELECTED\* = RobotPRO\*

# JULY GFORCE™ SIRES

## COOLBREEZE-S

**9H018353 FIT COOLBREEZE-S-ET**  
 8403281848181 96% RHA-I TR TP TC TV TL TY TD  
 aAa: 315 B-Casein: A2A2 K-Casein: BB



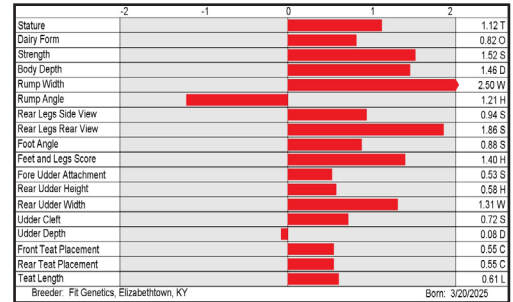
CDCB-S Genomic Evaluation			(04/26)	
Milk	+275	80%R	Net Merit (72%R)	+\$515
Protein	+0.08%	+30	DWPS*	
Fat	+0.24%	+76	Cheese Merit	+\$548



CDCB-S/HA Genomic Evaluation						(04/26)				
Type	+1.05	UDC	+0.35	FLC	+1.31	BWC	+1.51	78%R	GTPI <sup>1</sup>	+3111

Health and Fertility			(04/26)					
SCS	2.90	76%R	MAS	+2.1	72%R	PL	+2.1	75%R
LIV	+0.3	72%R	DPR	+0.9	75%R	HCR	+2.2	73%R
CCR	+1.9	75%R	FI	+1.6	75%R	SCE	1.3%	63%R
WT\$*			DCE	1.2%	57%R	DSB	3.1%	56%R
CW\$*			HHP\$*		+\$680			

S: Siemers Fgo HOLY-P 40167-ET  
 D: Gator Slick Maryellen  
 MGS: Farnear Upside-ET  
 MGD: Slick-Gator Ana-ET  
 MGGS: Dar-Burn Altatorrent



## DUNGEN-P

**14H018244 S-S-I MICAN DUNGEN-P-ET**  
 8403296576729 99% RHA-I TR PC TC TM TL TD TE  
 DMS: 123,126 aAa: 342 B-Casein: A1A2 K-Casein: AB



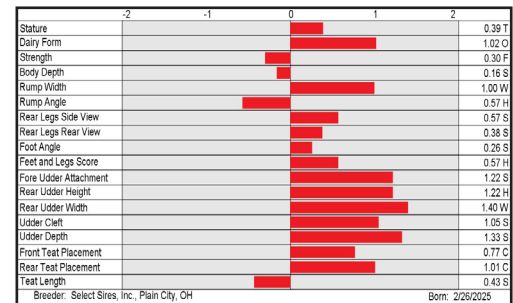
CDCB-S Genomic Evaluation			(04/26)	
Milk	+750	80%R	Net Merit (72%R)	+\$914
Protein	+0.09%	+50	DWPS*	+\$988
Fat	+0.21%	+87	Cheese Merit	+\$956



CDCB-S/HA Genomic Evaluation						(04/26)				
Type	+1.02	UDC	+1.24	FLC	+0.45	BWC	-0.45	79%R	GTPI <sup>1</sup>	+3389

Health and Fertility			(04/26)					
SCS	2.83	75%R	MAS	+0.8	71%R	PL	+5.2	74%R
LIV	+1.4	72%R	DPR	+1.2	74%R	HCR	+1.2	73%R
CCR	+3.2	74%R	FI	+1.8	74%R	SCE	1.1%	63%R
WT\$*	+\$97		DCE	1.8%	57%R	DSB	4.0%	56%R
CW\$*	-\$47		HHP\$*		+\$956			

S: S-S-I Sheepster MICAN-ET  
 D: Majr 600 Chew 900-P-ET  
 MGS: Penn-England CHEW-P-ET  
 MGD: Pine-Tree 7831 Lion 600-ET  
 MGGS: Mr T-Spruce Frazz LIONEL-ET



**YOUR SUCCESS** *Our Passion.*

(614) 873-4683 ♦ www.selectsires.com

04/26 Zoetis data. \*FeedPRO, GrazingPRO, HHP\$, Your Success Our Passion, and the Select Sires logo are registered trademarks of Select Sires Inc., Plain City, OH. TPI is a registered trademark of Holstein Association USA. DWPS and WT\$ are registered trademarks of Zoetis Inc., and its affiliates and/or its licensors. \*CW\$ is a trademark of Zoetis Inc., and its affiliates and/or its licensors. GForce and *gender* SELECTED are trademarks of Select Sires Inc. All *gender* SELECTED semen is processed using Ultraplus™ Technology. Ultraplus is a trademark of STGen LLC. Evaluations for non-conformation traits are Powered by CDCB™.

# JULY GFORCE™ SIRES

## SCALLION-PP

**14H018272 SIEMERS SSI SCALLION-PP-ET**  
 8403288817052 99% RHA-I TR PP TC TM TL TD TE  
 DMS: 345 B-Casein: A2A2 K-Casein: AB



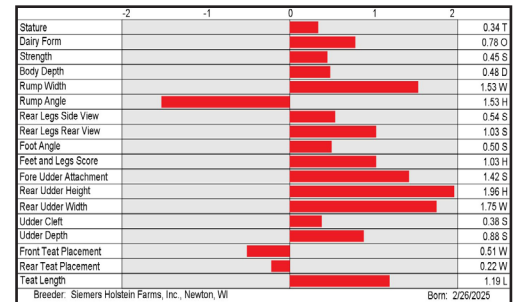
CDCB-S Genomic Evaluation		(04/26)	
Milk	+278 80%R	Net Merit (72%R)	+\$663
Protein	+0.09% +33	DWPS*	+\$725
Fat	+0.22% +70	Cheese Merit	+\$704



CDCB-S/HA Genomic Evaluation		(04/26)	
Type	+1.50	UDC	+1.22
FLC	+1.00	BWC	+0.33
79%R		GTPI*	+3220

Health and Fertility		(04/26)	
SCS	2.70 76%R	MAS	+3.3 72%R
LIV	+1.2 72%R	DPR	+0.0 74%R
CCR	+1.6 74%R	FI	+0.8 74%R
WT\$*	+\$7	DCE	1.3% 57%R
CW\$*	+\$27	HHP\$*	+\$767
		PL	+4.5 74%R
		HCR	+1.7 73%R
		SCE	1.5% 63%R
		DSB	3.6% 56%R

S: Siemers HABULOUS-P-ET  
 D: S-S-I SHF Chew 41329-P-ET (GP-82)  
 MGS: Penn-England CHEW-P-ET  
 MGD: S-S-I Aurora Tribut 6395-ET (GP-81-VG-MS)  
 MGGS: Plain-Knoll Lgcy TRIBUTE-ET



## OLSON

**14H018273 S-S-I SIEMERS RSMR OLSON-ET**  
 8403288816717 99% RHA-I TR TP TC TM TL TD TE  
 B-Casein: A1A2 K-Casein: AB



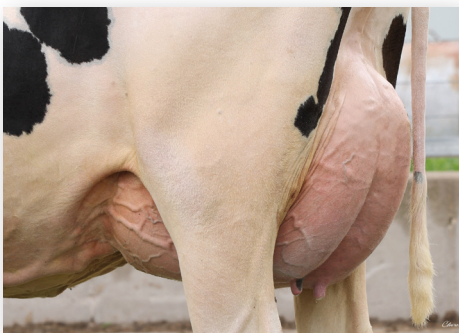
CDCB-S Genomic Evaluation		(04/26)	
Milk	+1,196 80%R	Net Merit (72%R)	+\$980
Protein	+0.10% +66	DWPS*	+\$949
Fat	+0.26% +121	Cheese Merit	+\$1,025



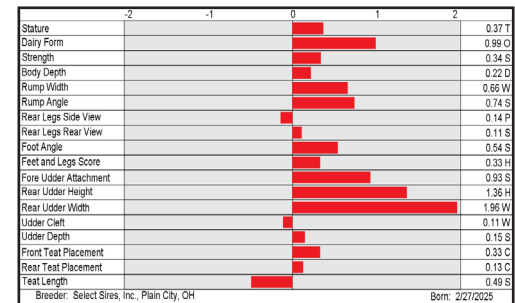
CDCB-S/HA Genomic Evaluation		(04/26)	
Type	+1.20	UDC	+0.90
FLC	+0.23	BWC	-0.01
79%R		GTPI*	+3455

Health and Fertility		(04/26)	
SCS	2.85 76%R	MAS	+1.9 71%R
LIV	+0.7 72%R	DPR	-1.6 74%R
CCR	-0.4 74%R	FI	-0.5 74%R
WT\$*	-\$94	DCE	2.2% 57%R
CW\$*	-\$25	HHP\$*	+\$1,092
		PL	+3.7 74%R
		HCR	+1.7 73%R
		SCE	2.0% 63%R
		DSB	4.7% 56%R

S: Wilra S-S-I F ROSEMARY-ET  
 D: Beyond Shpster 42065-ET (VG-85-VG-MS-DOM)  
 MGS: OCD Trooper SHEEPSTER-ET  
 MGD: AOT Deluxe Hi-Lighted-ET (EX-91-EX-MS-DOM)  
 MGGS: C-Haven Positive Deluxe-ET



BEYOND SHPSTER 42065-ET (VG-85-VG-MS-DOM)  
 Dam of OLSON



**YOUR SUCCESS** *Our Passion.*

(614) 873-4683 ♦ www.selectsires.com

04/26 Zoetis data. \*Mastitis ResistantPRO, RobotPRO, GrazingPRO, HHP\$, Your Success Our Passion. and the Select Sires logo are registered trademarks of Select Sires Inc., Plain City, OH. TPI is a registered trademark of Holstein Association USA. DWPS\$ and WT\$ are registered trademarks of Zoetis Inc., and its affiliates and/or its licensors. \*CW\$ is a trademark of Zoetis Inc., and its affiliates and/or its licensors. GForce and gender SELECTED are trademarks of Select Sires Inc. All gender SELECTED semen is processed using Ultraplus™ Technology. Ultraplus is a trademark of STGen LLC. Evaluations for non-conformation traits are Powered by CDCB\*.

= Mastitis ResistantPRO\* = gender SELECTED\* = RobotPRO\* = GrazingPRO\*

# JULY GFORCE™ SIRES

## RUNNER-RED

**14H018397 TRENT-WAY RUNNER-RED-ET**  
8403294304917 99% RHA-I TP TC TV TL TY TD  
B-Casein: A2A2 K-Casein: BB



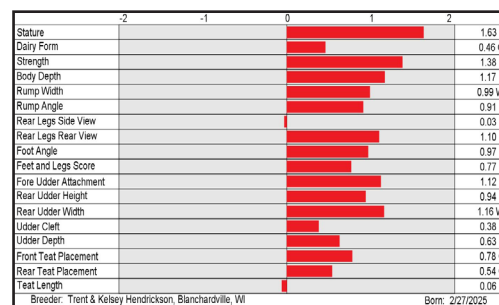
TRENT-WAY HAYK RUNWAY-ET (GP-82)  
Dam of RUNNER-RED

S: Trent-Way EXCLUSIVE-RED-ET  
D: Trent-Way Hayk Runway-ET (GP-82)  
MGS: Welcome-Tel Taos HAYK-ET  
MGD: Trent-Way Resbit-ET (EX-90-EX-MS)  
MGGS: Siemers Rengd PERFECT-ET

CDCB-S Genomic Evaluation		(04/26)	
Milk	+422 79%R	Net Merit (72%R)	+\$400
Protein	+0.07% +33	DWPS*	+\$434
Fat	+0.13% +52	Cheese Merit	+\$432

CDCB-S/HA Genomic Evaluation		(04/26)	
Type	+1.31	UDC	+0.58
FLC	+0.55	BWC	+1.41
78%R		GTPI*	+3030

Health and Fertility		(04/26)	
SCS	2.85 75%R	MAS	+3.4 71%R
LIV	-0.5 72%R	DPR	+0.6 74%R
CCR	+1.2 74%R	FI	+0.8 74%R
WT\$*	-\$30	DCE	1.3% 57%R
CW\$*	+\$27	HHP\$*	+\$614
PL	+2.6 74%R	HCR	-0.8 72%R
SCE	1.5% 63%R	DSB	3.8% 56%R



## VROMANS-PP

**250H018427 S-S-I MADRID VROMANS-PP-ET**  
8403296576613 99% RHA-I TR PP TC TV TL TY TD  
B-Casein: A2A2 K-Casein: AB



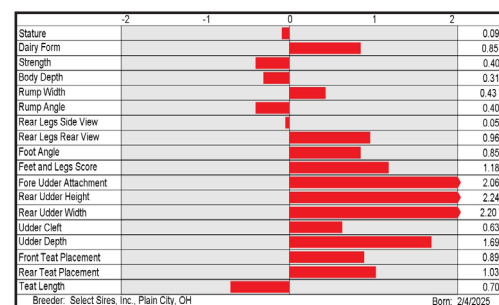
S-S-I HOR 11579 3344-ET (GP-80)  
Fourth dam of VROMANS-PP

S: OCD Cirrus MADRID-P-ET  
D: S-S-I Chew-P 2591 5352-P-ET  
MGS: Penn-England CHEW-P-ET  
MGD: Horsens S-S-I 4050 2591-ET (GP-82-DOM)  
MGGS: Rmd-Dotterer SSI GAMEDAY-ET

CDCB-S Genomic Evaluation		(04/26)	
Milk	+1,082 80%R	Net Merit (72%R)	+\$667
Protein	+0.01% +37	DWPS*	+\$777
Fat	+0.08% +66	Cheese Merit	+\$675

CDCB-S/HA Genomic Evaluation		(04/26)	
Type	+1.73	UDC	+1.99
FLC	+1.23	BWC	-0.66
79%R		GTPI*	+3203

Health and Fertility		(04/26)	
SCS	2.89 76%R	MAS	+0.8 72%R
LIV	+0.3 72%R	DPR	-1.2 74%R
CCR	+0.3 74%R	FI	-0.4 74%R
WT\$*	+\$141	DCE	1.8% 58%R
CW\$*	+\$17	HHP\$*	+\$643
PL	+4.5 74%R	HCR	+0.7 73%R
SCE	1.8% 63%R	DSB	4.8% 56%R



**YOUR SUCCESS** *Our Passion.*

(614) 873-4683 ♦ www.selectsires.com

04/26 Zoetis data. \*Mastitis ResistantPRO, HHP\$, Your Success Our Passion, and the Select Sires logo are registered trademarks of Select Sires Inc., Plain City, OH. TPI is a registered trademark of Holstein Association USA. DWPS and WT\$ are registered trademarks of Zoetis Inc., and its affiliates and/or its licensors. \*CW\$ is a trademark of Zoetis Inc., and its affiliates and/or its licensors. GForce and gender SELECTED are trademarks of Select Sires Inc. All gender SELECTED semen is processed using Ultraplus™ Technology. Ultraplus is a trademark of STGen LLC. Evaluations for non-conformation traits are Powered by CDCB™.

# JULY GFORCE™ SIRES

## ROYAL-RED

**644H018212 HAVEITALL ACTL ROYAL-RED-ET**  
 8403277629498 99% RHA-I TP TC TM TL TD  
 DMS: 126,123 B-Casein: A2A2 K-Casein: BB



CDCB-S Genomic Evaluation		(04/26)	
Milk	+684 80%R	Net Merit (72%R)	+\$283
Protein	+0.00% +23	DWP\$*	+\$104
Fat	+0.03% +36	Cheese Merit	+\$289



CDCB-S/HA Genomic Evaluation		(04/26)	
Type	+2.79	UDC	+1.89
FLC	+2.09	BWC	+0.57
79%R		GTP1'	+2969

Health and Fertility		(04/26)	
SCS	2.88 76%R	MAS	+1.2 72%R
LIV	-1.9 72%R	DPR	-1.2 75%R
CCR	-1.7 75%R	FI	-1.1 75%R
WT\$*	-\$59	DCE	2.3% 57%R
CW\$*	-\$58	HHP\$*	+\$321
		PL	+1.7 75%R
		HCR	+0.7 73%R
		SCE	1.5% 62%R
		DSB	4.7% 56%R



**DUCKETT RANGER 1133-ET (VG-89-EX-MS)**  
 Dam of ROYAL-RED

**AVAILABLE ONLY IN SEXED SEMEN**

S: Luck-E ACETYLENE-RED-ET  
 D: Duckett Ranger 1133-ET (VG-89-EX-MS)  
 MGS: 3Star Oh Ranger Red-ET  
 MGD: S-S-I Doc Have Not 8784-ET (EX-96-EX-MS-DOM)  
 MGGS: Woodcrest King DOC (EX-90)

	-2	-1	0	1	2	
Stature						1.73 T
Dairy Form						2.01 O
Strength						1.10 S
Body Depth						1.42 D
Rump Width						1.27 W
Rump Angle						0.03 H
Rear Legs Side View						0.25 S
Rear Legs Rear View						2.52 S
Foot Angle						2.12 S
Feet and Legs Score						2.25 H
Fore Udder Attachment						2.27 S
Rear Udder Height						2.83 H
Rear Udder Width						2.59 W
Udder Cleft						1.00 S
Udder Depth						1.56 S
Front Test Placement						1.23 C
Rear Test Placement						1.02 C
Test Length						0.27 S

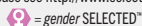
Breeder: M&JDuckett,T&SAbbott,AOTGen&Kings-Ransom,Rudolph,WI Born: 2/1/2025



**YOUR SUCCESS** *Our Passion.*

(614) 873-4683 ♦ [www.selectsires.com](http://www.selectsires.com)

04/26 Zoetis data. \*HHP\$, Your Success Our Passion, and the Select Sires logo are registered trademarks of Select Sires Inc., Plain City, OH. TPI is a registered trademark of Holstein Association USA. DWP\$ and WT\$ are registered trademarks of Zoetis Inc., and its affiliates and/or its licensors. Showbox Sires is a registered trademark of Showbox Sires, LLC. \*CW\$ is a trademark of Zoetis Inc., and its affiliates and/or its licensors. GForce and *gender* SELECTED are trademarks of Select Sires Inc. All *gender* SELECTED semen is processed using Ultraplus™ Technology. Ultraplus is a trademark of STGen LLC. Limitations and Conditions of Sale: *gender* SELECTED semen shall be used only for the single insemination of one female bovine during natural ovulation with the intent to produce a single offspring unless specifically approved on an individual customer basis by Sexing Technologies in writing. As a condition of purchasing *gender* SELECTED semen, the purchaser agrees that *gender* SELECTED semen will not be reverse sorted or re-sorted unless specifically permitted, in advance, on a case-by-case basis by Select Sires in writing. Select Sires intends to monitor the use of the *gender* SELECTED semen and vigorously enforce these restrictions on use. Please see <http://www.selectsires.com/designations/gendersselected.html> for additional details. Evaluations for non-conformation traits are Powered by CDCB™.



# JULY GFORCE™ SIRES

## JX HOLDER {6}-PP

**507JE2485 JX AVI-LANCHE JLS CAPER HOLDER {6}-PP-ET**  
 8403285683257 PJA 100 JH1C JNSF  
 B-Casein: A1A2 K-Casein: BB



### CDCB-S Genomic Evaluation (04/26)

Milk	-71	75%R	Net Merit (73%R)	+\$395
Protein	+0.06%	+9	Cheese Merit	+\$414
Fat	+0.17%	+29	CFP	+38

### CDCB-S/AJCA Genomic Evaluation (04/26)

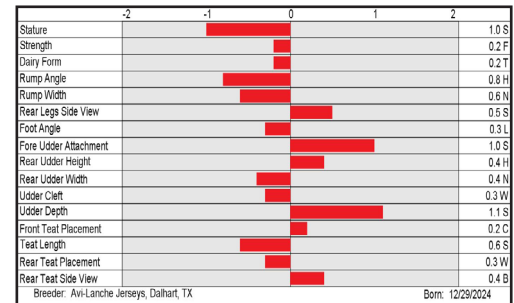
Type	+0.4	79%R	+17.8JUI*	GJPI* +141
------	------	------	-----------	------------

### Health and Fertility (04/26)

SCS	2.83	75%R	PL	+3.8	73%R	LIV	+1.5	64%R
DPR	+1.2	71%R	HCR	+2.6	64%R	CCR	+1.9	71%R
DWP\$*	+\$609		WT\$*	+\$163		CW\$™	+\$81	
M FVR	104	41%R	MAS	+0.1	61%R	ZMAS	109	44%R
HHP\$*	+\$402							

AVAILABLE ONLY IN SEXED SEMEN

- S: JX Primus Monster CAPER {5}-P-ET
- D: JX Avi-Lanche Seismicp Honey 37635 {5}-P-ET (VG-81%)
- MGS: Ahlem Dimitri SEISMIC-PP-ET
- MGD: JX Avi-Lanche Stoney Honey 27276 {4} (VG-85%)
- MGGs: JX Spring Creek Marlo STONEY {3}-ET



## JX MIDTOWN {5}

**507JE2500 JX PINE-TREE MIDTOWN {5}-ET**  
 USA76381396 PJA 100 JH1F JNSF  
 B-Casein: A2A2 K-Casein: BB



### CDCB-S Genomic Evaluation (04/26)

Milk	+1,057	78%R	Net Merit (76%R)	+\$570
Protein	-0.02%	+36	Cheese Merit	+\$577
Fat	+0.06%	+65	CFP	+101

### CDCB-S/AJCA Genomic Evaluation (04/26)

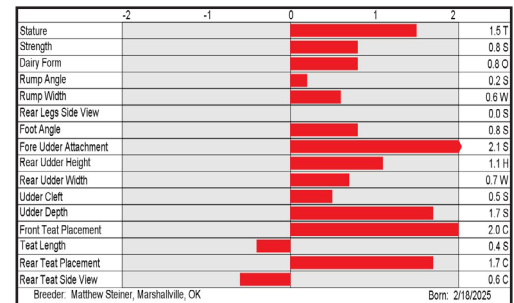
Type	+1.3	81%R	+21.5JUI*	GJPI* +195
------	------	------	-----------	------------

### Health and Fertility (04/26)

SCS	2.93	78%R	PL	+4.2	76%R	LIV	+1.0	66%R
DPR	-0.8	73%R	HCR	+1.1	66%R	CCR	+0.1	73%R
DWP\$*	+\$716		WT\$*	+\$18		CW\$™	+\$1	
M FVR	96	45%R	MAS	-0.1	64%R	ZMAS	102	48%R
HHP\$*	+\$675							

AVAILABLE ONLY IN SEXED SEMEN

- S: JX Primus Enzo CHATHAM {4}-ET
- D: JX MM Thrasher Manhattan 13947 {5}-ET (E-92%)
- MGS: JX CDF JLS Pilgrim THRASHER {6}-ET
- MGD: JX MM Manhattan {4}
- MGGs: JX Pine-Tree Amplify {3}-ET



**YOUR SUCCESS** *Our Passion.*

(614) 873-4683 • [www.selectsires.com](http://www.selectsires.com)

04/26 Zoetis data. \*Mastitis ResistantPRO, FeedPRO, GrazingPRO, HHP\$, Your Success Our Passion, and the Select Sires logo are registered trademarks of Select Sires Inc., Plain City, OH. DWP\$ and WT\$ are registered trademarks of Zoetis Inc., and its affiliates and/or its licensors. CW\$ is a trademark of Zoetis Inc., and its affiliates and/or its licensors. JPI and JUI are trademarks of the American Jersey Cattle Association. GForce and gender SELECTED are trademarks of Select Sires Inc. All gender SELECTED semen is processed using Ultraplus™ Technology. Ultraplus is a trademark of STGen LLC. Limitations and Conditions of Sale: gender SELECTED semen shall be used only for the single insemination of one female bovine during natural ovulation with the intent to produce a single offspring unless specifically approved on an individual customer basis by Sexing Technologies in writing. As a condition of purchasing gender SELECTED semen, the purchaser agrees that gender SELECTED semen will not be reverse sorted or re-sorted unless specifically permitted, in advance, on a case-by-case basis by Select Sires in writing. Select Sires intends to monitor the use of the gender SELECTED semen and vigorously enforce these restrictions on use. Please see <http://www.selectsires.com/designations/gendersselected.html> for additional details. Evaluations in this report are Powered by CDCB®.

# JULY GFORCE™ SIRES

**JX BANFF {6}**

**507JE2508 JX CDF JLS BIRKDALE BANFF {6}-ET**  
 8403203110615 PJA 100 JH1F JNSF  
 B-Casein: A2A2 K-Casein: BB



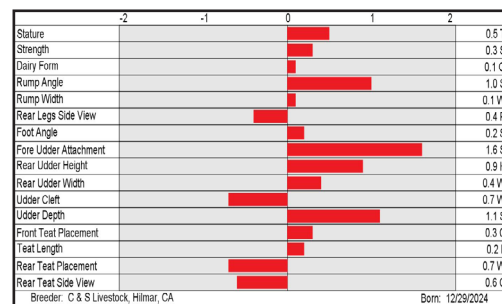
CDCB-S Genomic Evaluation			(04/26)	
Milk	+801	74%R	Net Merit (72%R)	+\$434
Protein	-0.06%	+19	Cheese Merit	+\$431
Fat	-0.01%	+39	CFP	+58

CDCB-S/AJCA Genomic Evaluation			(04/26)	
Type	+0.7	78%R	+20.2JUI*	GJPI* +162

Health and Fertility			(04/26)					
SCS	2.79	74%R	PL	+4.1	73%R	LIV	+1.0	64%R
DPR	+0.1	71%R	HCR	+0.7	63%R	CCR	+0.8	71%R
DWP\$*	+\$789		WT\$*	+\$236		CW\$™	+\$99	
M FVR	100	42%R	MAS	+0.8	61%R	ZMAS	114	45%R
HHP\$*	+\$545							

**AVAILABLE ONLY IN SEXED SEMEN**

S: Victory Blizzard BIRKDALE {5}-ET  
 D: JX CDF Chatham Thrasher H3320 {5}  
 MGS: JX Primus Enzo CHATHAM {4}-ET  
 MGD: CDF Thrasher Ivory W9268 (VG-82%)  
 MGGs: JX CDF JLS Pilgrim THRASHER {6}-ET



**YOUR SUCCESS** *Our Passion.*

(614) 873-4683 ♦ [www.selectsires.com](http://www.selectsires.com)

04/26 Zoetis data. \*Mastitis ResistantPRO, FeedPRO, RobotPRO, HHP\$, Your Success Our Passion, and the Select Sires logo are registered trademarks of Select Sires Inc., Plain City, OH. DWP\$ and WT\$ are registered trademarks of Zoetis Inc., and its affiliates and/or its licensors. ™CW\$ is a trademark of Zoetis Inc., and its affiliates and/or its licensors. JPI and JUI are trademarks of the American Jersey Cattle Association. GForce and gender SELECTED are trademarks of Select Sires Inc. All gender SELECTED semen is processed using Ultraplus™ Technology. Ultraplus is a trademark of STGen LLC. Limitations and Conditions of Sale: gender SELECTED semen shall be used only for the single insemination of one female bovine during natural ovulation with the intent to produce a single offspring unless specifically approved on an individual customer basis by Sexing Technologies in writing. As a condition of purchasing gender SELECTED semen, the purchaser agrees that gender SELECTED semen will not be reverse sorted or re-sorted unless specifically permitted, in advance, on a case-by-case basis by Select Sires in writing. Select Sires intends to monitor the use of the gender SELECTED semen and vigorously enforce these restrictions on use. Please see <http://www.selectsires.com/designations/genderselected.html> for additional details. Evaluations in this report are Powered by CDCB®.