

# FEBRUARY GFORCE™ SIREs

## EVENT-P

7H016889 BADGER SIEMERS G EVENT-P-ET  
8403250769125 99% RHA-I TR PC TC TM TV TL TY TD  
DMS: 456,561 aAa: 531 B-Casein: A2A2 K-Casein: AB MWT



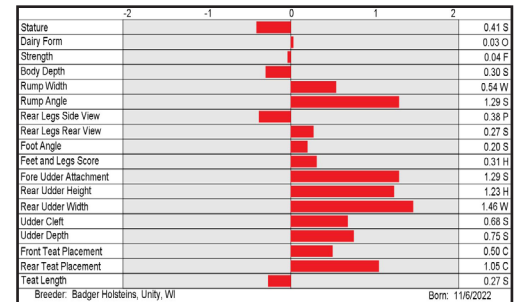
GENOSOURCE MEDLEY ROSE-ET (VG-87-VG-MS)  
Third Dam of EVENT-P

S: Winstar Perfect CIRRUS-P-ET  
D: S-S-I Badger Brock 17542-ET  
MGS: S-S-I Limlight BEDROCK-PP-ET  
MGD: S-S-I Biggelo Rose 12573-ET  
MGGS: S-S-I Delroy BIGGELO-ET

CDCB-S Genomic Evaluation		(12/23)	
Milk	+950	79%R	Net Merit (73%R) +\$958
Protein	+0.10%	+58	DWPS* +\$911
Fat	+0.18%	+88	Cheese Merit +\$980

CDCB-S/HA Genomic Evaluation		(12/23)	
Type	+1.00	UDC +1.28	FLC +0.41 BWC -0.07 77%R GTPI* +2914

Health and Fertility		(12/23)	
SCS	2.74	75%R	MAS +1.2 70%R PL +5.9 74%R
LIV	+1.3	70%R	DPR -0.3 73%R HCR +1.1 72%R
CCR	+1.2	73%R	FI +0.3 73%R SCE 1.6% 63%R
WT\$	+\$103		DCE 1.7% 57%R DSB 3.8% 54%R
CW\$	-\$62		HHP\$* +\$983



## POROTO

7H016894 S-S-I SIEMERS OD POROTO-ET  
8403250769177 99% RHA-I TR TP TC TM TV TL TY TD  
B-Casein: A2A2 K-Casein: AB MWT



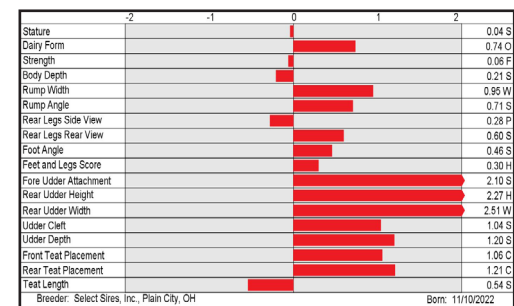
BADGER SSI OUT 7423 3192-ET (VG-88-EX-MS)  
Third Dam of POROTO

S: Ladys-Manor Overdo-ET  
D: Badger S-S-I VF 60564-ET (GP-81)  
MGS: Siemers Rengd PERFECT-ET  
MGD: Horsens S-S-I 3192 16215-ET  
MGGS: S-S-I BG Frzzld RIVETING-ET

CDCB-S Genomic Evaluation		(12/23)	
Milk	+957	80%R	Net Merit (73%R) +\$1,113
Protein	+0.10%	+58	DWPS* +\$1,190
Fat	+0.26%	+113	Cheese Merit +\$1,138

CDCB-S/HA Genomic Evaluation		(12/23)	
Type	+1.04	UDC +2.00	FLC +0.41 BWC -0.26 78%R GTPI* +3111

Health and Fertility		(12/23)	
SCS	2.60	75%R	MAS +3.9 70%R PL +5.9 74%R
LIV	+0.9	71%R	DPR +0.6 74%R HCR +1.3 72%R
CCR	+2.0	74%R	FI +1.0 74%R SCE 1.8% 63%R
WT\$	+\$164		DCE 2.1% 57%R DSB 4.1% 55%R
CW\$	-\$53		HHP\$* +\$1,211



=gender SELECTED\*

=Mastitis ResistantPRO\*

=FeedPRO\*

=GrazingPRO\*

\*Mastitis ResistantPRO, FeedPRO, GrazingPRO, HHP\$, Your Success Our Passion, and the Select Sires logo are registered trademarks of Select Sires Inc., Plain City, OH. TPI is a registered trademark of Holstein Association USA. DWPS and WT\$ are registered trademarks of Zoetis Inc., and its affiliates and/or its licensors. Zoetis wellness values are based on January 2024 Zoetis data. "CW\$" is a trademark of Zoetis Inc., and its affiliates and/or its licensors. GForce and gender SELECTED are trademarks of Select Sires Inc. All gender SELECTED semen is processed using Ultraplus® Technology. Ultraplus is a trademark of STGen LLC.

## YOUR SUCCESS *Our Passion.*

Phone: (614) 873-4683 ♦ [www.selectsires.com](http://www.selectsires.com)

# FEBRUARY GFORCE™ SIREs

## NITROUS

7H016950 AURORA NITROUS-ET  
8403256982546 99% RHA-I TR TP TC TM TV TL TY TD  
DMS: 345,135 aAa: 423 B-Casein: A2A2 K-Casein: AB MWT



NITROUS

S: T-Spruce G FROST BITE-ET  
D: Aurora Renegade 23215 (VG-85-VG-MS-DOM)  
MGS: S-S-I PR RENEGADE-ET  
MGD: Aurora Tarrino 21064-ET (VG-88-VG-MS)  
MGGS: Welcome TARRINO 3181-ET

CDCB-S Genomic Evaluation			(12/23)	
Milk	+1,855	80%R	Net Merit (73%R)	+\$1,165
Protein	+0.04%	+71	DWPs*	+\$1,315
Fat	+0.16%	+118	Cheese Merit	+\$1,175
CDCB-S/HA Genomic Evaluation			(12/23)	
Type +0.95	UDC +0.77	FLC +0.76	BWC -0.21	78%R
Health and Fertility			(12/23)	
SCS 2.89	75%R	MAS +0.5	71%R	PL +5.5 74%R
LIV +1.1	71%R	DPR +1.4	74%R	HCR +4.3 72%R
CCR +3.9	74%R	FI +2.6	74%R	SCE 1.3% 63%R
WT\$ +\$108		DCE 1.4%	57%R	DSB 3.6% 55%R
CW\$ - \$33		HHP\$*	+\$1,168	

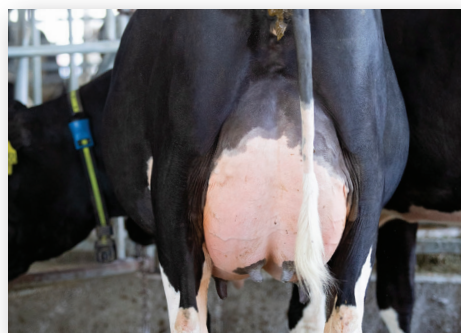
	-2	-1	0	1	2	
Stature						0.09 S
Dairy Form						0.79 O
Strength						0.14 S
Body Depth						0.07 S
Rump Width						0.92 W
Rump Angle						0.77 H
Rear Legs Side View						0.84 S
Rear Legs Rear View						0.65 S
Foot Angle						0.16 S
Feet and Legs Score						0.76 H
Fore Udder Attachment						0.53 S
Rear Udder Height						1.19 H
Rear Udder Width						1.55 W
Udder Cleft						0.41 S
Udder Depth						0.28 D
Front Test Placement						0.17 C
Rear Test Placement						0.61 C
Test Length						0.34 L

Breeder: Aurora Ridge Dairy LLC, Aurora, NY

Born: 7/20/2022

## CARROT

507H016744 S-S-I SIEMERS OD CARROT-ET  
8403250768862 99% RHA-I TR TP TC TM TV TL TY TD  
DMS: 561,135 aAa: 423 B-Casein: A2A2 K-Casein: BB MWT



S-S-I VF 316 59873-ET (VG-87-VG-MS-DOM)  
Dam of CARROT

AVAILABLE ONLY IN SEXED SEMEN

S: Ladys-Manor Overdo-ET  
D: S-S-I VF 316 59873-ET (VG-87-VG-MS-DOM)  
MGS: Siemers Rengd PERFECT-ET  
MGD: Preston SSI HD 5716 316-ET  
MGGS: Pine-Tree CW LEGACY-ET

CDCB-S Genomic Evaluation			(12/23)	
Milk	+829	80%R	Net Merit (73%R)	+\$1,199
Protein	+0.11%	+58	DWPs*	+\$1,206
Fat	+0.34%	+130	Cheese Merit	+\$1,221
CDCB-S/HA Genomic Evaluation			(12/23)	
Type +1.65	UDC +2.32	FLC +1.32	BWC -1.44	79%R
Health and Fertility			(12/23)	
SCS 2.79	75%R	MAS +1.6	70%R	PL +5.6 74%R
LIV +1.5	71%R	DPR +0.4	74%R	HCR +2.4 72%R
CCR +1.7	74%R	FI +1.0	74%R	SCE 1.8% 63%R
WT\$ +\$28		DCE 2.1%	57%R	DSB 4.2% 55%R
CW\$ - \$16		HHP\$*	+\$1,133	

	-2	-1	0	1	2	
Stature						0.87 S
Dairy Form						1.42 O
Strength						0.95 F
Body Depth						0.86 S
Rump Width						1.04 W
Rump Angle						0.68 H
Rear Legs Side View						0.04 S
Rear Legs Rear View						1.28 S
Foot Angle						0.55 S
Feet and Legs Score						1.00 H
Fore Udder Attachment						1.91 S
Rear Udder Height						2.54 H
Rear Udder Width						2.85 W
Udder Cleft						2.18 S
Udder Depth						0.66 S
Front Test Placement						1.56 C
Rear Test Placement						2.30 C
Test Length						0.61 S

Breeder: Select Sires, Inc., Plain City, OH

Born: 10/14/2022

SELECT SIREs

YOUR SUCCESS *Our Passion.*

Phone: (614) 873-4683 ♦ [www.selectsires.com](http://www.selectsires.com)

 = gender SELECTED\*

 = FeedPRO\*

 = RobotPRO\*

 = GrazingPRO\*

\*FeedPRO, RobotPRO, GrazingPRO, HHP\$, Your Success Our Passion. and the Select Sires logo are registered trademarks of Select Sires Inc., Plain City, OH. TPI is a registered trademark of Holstein Association USA. DWPs and WT\$ are registered trademarks of Zoetis Inc., and its affiliates and/or its licensors. Zoetis wellness values are based on January 2024 Zoetis data. "CW\$ is a trademark of Zoetis Inc., and its affiliates and/or its licensors. GForce and gender SELECTED are trademarks of Select Sires Inc. All gender SELECTED semen is processed using Ultraplus\* Technology. Ultraplus is a trademark of STGen LLC. Limitations and Conditions of Sale: gender SELECTED semen shall be used only for the single insemination of one female bovine during natural ovulation with the intent to produce a single offspring unless specifically approved on an individual customer basis by Sexing Technologies in writing. As a condition of purchasing gender SELECTED semen, the purchaser agrees that gender SELECTED semen will not be reverse sorted or re-sorted unless specifically permitted, in advance, on a case-by-case basis by Select Sires in writing. Select Sires intends to monitor the use of the gender SELECTED semen and vigorously enforce these restrictions on use. Please see <http://www.selectsires.com/designations/gendersselected.html> for additional details.

# FEBRUARY GFORCE™ SIRES

## FINCH

14H017105 T-SPRUCE FIGARO FINCH-ET  
8403260814986 99% RHA-I TR TP TC TM TL TD  
DMS: 246,456 aAa: 351 B-Casein: A1A2 K-Casein: AE MWT



Accelerated Genetics™



ENDCO YODER L7933 9839-ET (VG-86-VG-MS)  
Third Dam of FINCH

S: OCD Perfect FIGARO-ET  
D: T-Spruce Zarek 15464-ET  
MGS: Peak Altazarek-ET  
MGD: Mercedes Lionel Lass-ET  
MGGS: Mr T-Spruce Frazz LIONEL-ET

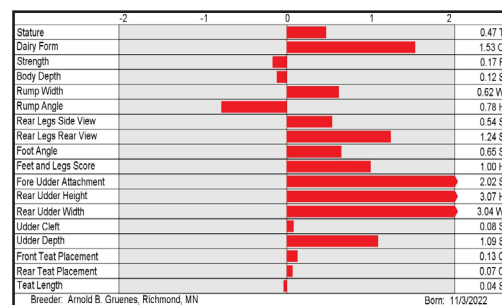
CDCB-S Genomic Evaluation			(12/23)	
Milk	+1,784	80%R	Net Merit (73%R)	+\$1,143
Protein	+0.06%	+72	DWP\$*	+\$1,293
Fat	+0.15%	+114	Cheese Merit	+\$1,155

CDCB-S/HA Genomic Evaluation			(12/23)	
Type	+1.75	UDC +2.02	FLC +1.00	BWC -0.64 78%R GTPI* +3120

Health and Fertility			(12/23)	
SCS	2.88	75%R	MAS +1.8 71%R	PL +5.5 74%R
LIV	+0.1	71%R	DPR -1.6 74%R	HCR +2.7 72%R
CCR	+0.2	74%R	FI -0.4 74%R	SCE 2.2% 63%R
WT\$*	+\$58		DCE 2.3% 57%R	DSB 5.0% 55%R
CW\$*	+\$12		HHP\$*	+\$1,142



## DUSTIN

7JE2211 S-S-I VICTORY UNCOMMON DUSTIN-ET  
8403257224739 BBR 100 JH1F JNS-TF  
DMS: 126,561 aAa: 354 B-Casein: A2A2 K-Casein: BB



S-S-I VICTORY NAVIDAD 60194-ET (VG-85%)  
Dam of DUSTIN

S: Valsigna Gislev UNCOMMON-ET  
D: S-S-I Victory Navidad 60194-ET (VG-85%)  
MGS: Pine-Tree Chrome NAVIDAD (6)-ET  
MGD: Roc-Bot Dance Off 10637 (VG-84%)  
MGGS: Progenesis Dancer-ET

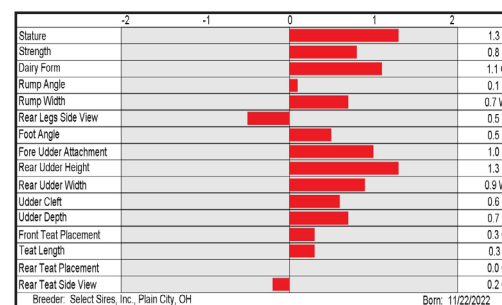
CDCB-S Genomic Evaluation			(12/23)	
Milk	+1,102	74%R	Net Merit (72%R)	+\$624
Protein	+0.03%	+48	Cheese Merit	+\$634
Fat	+0.15%	+87	CFP	+135

CDCB-S/AJCA Genomic Evaluation			(12/23)	
Type	+1.0	78%R	+16.2JUI*	GJPI* +161

Health and Fertility			(12/23)	
SCS	2.91	74%R	PL +1.8 71%R	LIV +0.5 60%R
DPR	-0.6	69%R	HCR +1.0 59%R	CCR +0.3 69%R
DWP\$*	+\$951		WT\$* +\$106	CW\$* +\$35
M FVR	95	26%R	MAS -2.2 58%R	ZMAS 105 34%R
HHP\$*	+\$668			



SELECT SIRES

YOUR SUCCESS *Our Passion.*

Phone: (614) 873-4683 ♦ [www.selectsires.com](http://www.selectsires.com)

= gender SELECTED™

= FeedPRO™

= RobotPRO™

\*FeedPRO, RobotPRO, HHP\$, Your Success Our Passion, and the Select Sires logo are registered trademarks of Select Sires Inc., Plain City, OH. TPI is a registered trademark of Holstein Association USA. DWP\$ and WT\$ are registered trademarks of Zoetis Inc., and its affiliates and/or its licensors. Zoetis wellness values are based on January 2024 Zoetis data. \*CW\$ is a trademark of Zoetis Inc., and its affiliates and/or its licensors. JPI and JUL are trademarks of the American Jersey Cattle Association. GForce and gender SELECTED are trademarks of Select Sires Inc. All gender SELECTED semen is processed using Ultraplus™ Technology. Ultraplus is a trademark of STGen LLC.



# FEBRUARY GFORCE™ SIREs

## ALUNA

7JE2262 DUPAT ARTIST ALUNA  
8403242639147 BBR 100 JH1F JNS-TF  
B-Casein: A2A2 K-Casein: BB



CDCB-S Genomic Evaluation			(12/23)	
Milk	+1,223	75%R	Net Merit (72%R)	+\$707
Protein	+0.01%	+47	Cheese Merit	+\$713
Fat	-0.08%	+42	CFP	+89

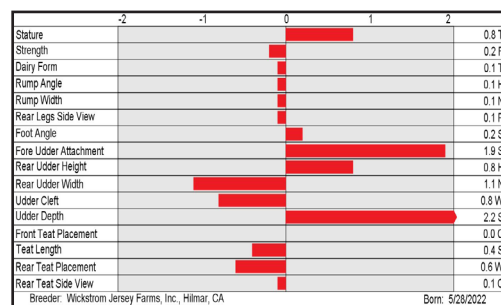
CDCB-S/AJCA Genomic Evaluation			(12/23)	
Type	+0.9	78%R	+17.0JUI*	GJPI* +176

Health and Fertility			(12/23)	
SCS	2.97	74%R	PL +7.0	72%R
DPR	+0.9	70%R	HCR +4.6	60%R
DWP\$*	+\$941		WT\$*	+\$64
M FVR	98	32%R	MAS -1.5	60%R
HHP\$*	+\$765			



GOFF PHAROAH CIRCUS ACT-ET (E-90%)  
Third Dam of ALUNA

S: Jer Bel Pine ARTIST  
D: Primus Dashiell 14535 Carnival-ET (VG-81%)  
MGS: JX Avi-Lanche Viceroy DASHIELL (6)-ET  
MGD: River Valley Lemonhead Carnival-ET  
MGGS: Steinhauers Samson LEMONHEAD



## JX UPCYCLE {6}-P

507JE2181 JX VICTORY GEPPETTO UPCYCLE {6}-P-ET  
8403259012700 BBR 100 JH1F JNSC  
DMS: 345,456 aAa: 453 B-Casein: A2A2 K-Casein: BB



CDCB-S Genomic Evaluation			(12/23)	
Milk	+906	74%R	Net Merit (72%R)	+\$778
Protein	+0.09%	+54	Cheese Merit	+\$796
Fat	+0.12%	+70	CFP	+124

CDCB-S/AJCA Genomic Evaluation			(12/23)	
Type	+1.2	78%R	+14.3JUI*	GJPI* +177

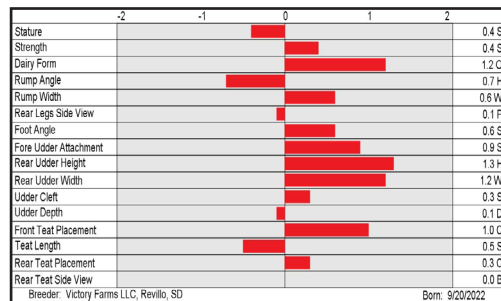
Health and Fertility			(12/23)	
SCS	2.84	73%R	PL +6.1	71%R
DPR	-1.4	68%R	HCR +1.3	57%R
DWP\$*	+\$1,080		WT\$*	+\$193
M FVR	91	35%R	MAS -1.1	58%R
HHP\$*	+\$737			



JX VICTORY LISTOWEL 60495 (5)-P-ET (VG-80%)  
Dam of JX UPCYCLE (6)-P

AVAILABLE ONLY IN SEXED SEMEN

S: Ahlem Gifted GEPPETTO (6)-ET  
D: JX Victory Listowel 60495 (5)-P-ET (E-90%)  
MGS: Hillview Listowel-P  
MGD: JX Victory Fournette Jane 55339 {4}  
MGGS: JX Faria Brothers FOURNETTE {3}-ET



## YOUR SUCCESS *Our Passion.*

Phone: (614) 873-4683 ♦ [www.selectsires.com](http://www.selectsires.com)



\*FeedPRO, RobotPRO, GrazingPRO, HHP\$, Your Success Our Passion, and the Select Sires logo are registered trademarks of Select Sires Inc., Plain City, OH. DWP\$ and WT\$ are registered trademarks of Zoetis Inc., and its affiliates and/or its licensors. Zoetis wellness values are based on January 2024 Zoetis data. "CW\$" is a trademark of Zoetis Inc., and its affiliates and/or its licensors. JPI and JUI are trademarks of the American Jersey Cattle Association. GForce and gender SELECTED are trademarks of Select Sires Inc. All gender SELECTED semen is processed using Ultraplus™ Technology. Ultraplus is a trademark of STGen LLC. Limitations and Conditions of Sale: gender SELECTED semen shall be used only for the single insemination of one female bovine during natural ovulation with the intent to produce a single offspring unless specifically approved on an individual customer basis by Sexing Technologies in writing. As a condition of purchasing gender SELECTED semen, the purchaser agrees that gender SELECTED semen will not be reverse sorted or re-sorted unless specifically permitted, in advance, on a case-by-case basis by Select Sires in writing. Select Sires intends to monitor the use of the gender SELECTED semen and vigorously enforce these restrictions on use. Please see <http://www.selectsires.com/designations/genderselected.html> for additional details.



# FEBRUARY GFORCE™ SIREs

## AIDEN

507JE2200 S-S-I VICTORY DURAMAX AIDEN-ET  
8403257224722 BBR 100 JH1F JNS-TF  
DMS: 123,135 aAa: 354 B-Casein: A2A2 K-Casein: AB



PRO-HART CHROME LORETTA {6} (E-90%)  
Fourth Dam of AIDEN

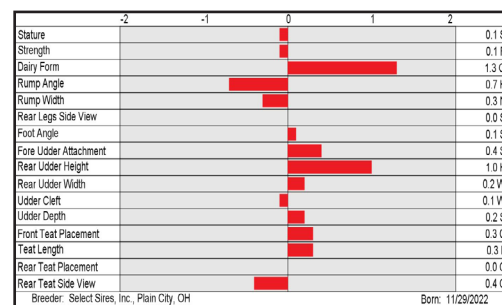
AVAILABLE ONLY IN SEXED SEMEN

S: Legendairy DURAMAX-ET  
D: S-S-I Victory Tucker 61689-ET  
MGS: Rowleys 1996 Daniel TUCKER {6}-ET  
MGD: Rowleys 1995 Miami 2506-ET (VG-85%)  
MGGS: Hilmar Viceroy MIAMI

CDCB-S Genomic Evaluation			(12/23)	
Milk	+1,083	73%R	Net Merit (70%R)	+\$663
Protein	+0.04%	+49	Cheese Merit	+\$676
Fat	-0.02%	+48	CFP	+97

CDCB-S/AJCA Genomic Evaluation			(12/23)	
Type	+0.8	77%R	+12.7JUI*	GJPI* +167

Health and Fertility			(12/23)	
SCS	2.83	73%R	PL	+5.2 70%R
DPR	+0.5	67%R	HCR	+2.5 57%R
DWP\$*	+\$902		WT\$*	+\$133
M FVR	88	23%R	MAS	-0.7 55%R
HHP\$*	+\$714		ZMAS	105 31%R



## BIRKDALE {5}

507JE2207 VICTORY BLIZZARD BIRKDALE {5}-ET  
8403257224740 BBR 100 JH1F JNS-TF  
DMS: 561,126 aAa: 342 B-Casein: A2A2 K-Casein: BB



VICTORY 51451 CHIEF 57692 {4} (VG-83%)  
Dam of BIRKDALE {5}

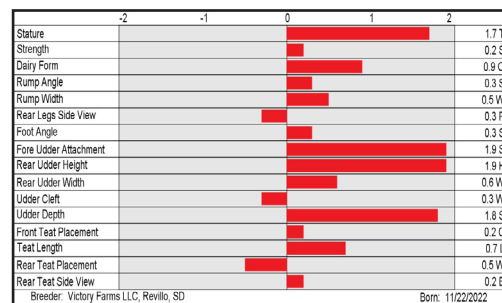
AVAILABLE ONLY IN SEXED SEMEN

S: Valsigna Pine BLIZZARD  
D: Victory 51451 Chief 57692 {4} (E-90%)  
MGS: JX River Valley Chief {6}-ET  
MGD: Victory 41052 Barricade 51451 {3}  
MGGS: Cal-Mart Barricade

CDCB-S Genomic Evaluation			(12/23)	
Milk	+1,100	75%R	Net Merit (73%R)	+\$684
Protein	+0.02%	+45	Cheese Merit	+\$694
Fat	+0.07%	+70	CFP	+115

CDCB-S/AJCA Genomic Evaluation			(12/23)	
Type	+1.3	78%R	+20.7JUI*	GJPI* +183

Health and Fertility			(12/23)	
SCS	2.82	74%R	PL	+4.9 72%R
DPR	-0.9	70%R	HCR	+2.0 61%R
DWP\$*	+\$1,071		WT\$*	+\$219
M FVR	95	37%R	MAS	+0.2 61%R
HHP\$*	+\$795		ZMAS	110 44%R



- = gender SELECTED\*
- = Mastitis ResistantPRO\*
- = FeedPRO\*
- = RobotPRO\*
- = GrazingPRO\*

\*Mastitis ResistantPRO, FeedPRO, RobotPRO, GrazingPRO, HHP\$, Your Success Our Passion, and the Select Sires logo are registered trademarks of Select Sires Inc., Plain City, OH. DWP\$ and WT\$ are registered trademarks of Zoetis Inc., and its affiliates and/or its licensors. Zoetis wellness values are based on January 2024 Zoetis data. "CW\$ is a trademark of Zoetis Inc., and its affiliates and/or its licensors. JPI and JUI are trademarks of the American Jersey Cattle Association. GForce and gender SELECTED are trademarks of Select Sires Inc. All gender SELECTED semen is processed using Ultraplus® Technology. Ultraplus is a trademark of STGen LLC. Limitations and Conditions of Sale: gender SELECTED semen shall be used only for the single insemination of one female bovine during natural ovulation with the intent to produce a single offspring unless specifically approved on an individual customer basis by Sexing Technologies in writing. As a condition of purchasing gender SELECTED semen, the purchaser agrees that gender SELECTED semen will not be reverse sorted or re-sorted unless specifically permitted, in advance, on a case-by-case basis by Select Sires in writing. Select Sires intends to monitor the use of the gender SELECTED semen and vigorously enforce these restrictions on use. Please see <http://www.selectsires.com/designations/genderselected.html> for additional details.

## YOUR SUCCESS *Our Passion.*

Phone: (614) 873-4683 ♦ [www.selectsires.com](http://www.selectsires.com)

# FEBRUARY GFORCE™ SIREs

## ODESZA

507JE2227 DUPAT BLIZZARD ODESZA-ET  
8403242639203 BBR 100 JH1F JNS-TF  
B-Casein: A2A2 K-Casein: BB



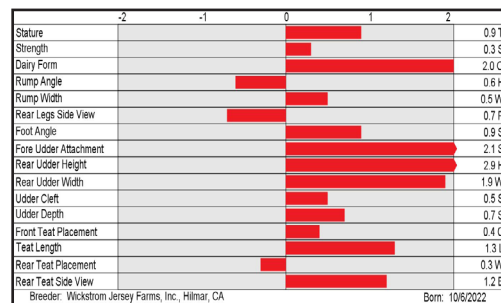
CDCB-S Genomic Evaluation			(12/23)
Milk	+1,537	74%R	Net Merit (72%R) +\$739
Protein	-0.01%	+53	Cheese Merit +\$746
Fat	-0.04%	+66	CFP +119

CDCB-S/AJCA Genomic Evaluation			(12/23)
Type +2.1	78%R		+21.3JUI* GJPI* +183

Health and Fertility			(12/23)
SCS 2.84	74%R	PL +5.4	72%R LIV -0.3 62%R
DPR -1.5	69%R	HCR +3.2	60%R CCR +0.2 69%R
DWP\$* +\$987		WT\$* +\$124	CW\$™ +\$47
M FVR 90	35%R	MAS -0.9	60%R ZMAS 106 43%R
HHP\$* +\$784			

AVAILABLE ONLY IN SEXED SEMEN

S: Valsigna Pine BLIZZARD  
D: Dupat Chief 22930 (VG-81%)  
MGS: JX River Valley Chief {6}-ET  
MGD: Dupat Bancroft 18100 (VG-83%)  
MGGS: Ahlem Axis Bancroft-ET



## JX MAYPOP {5}-P

614JE2235 JX ROWLEY MONSTER MAYPOP {5}-P-ET  
8403250479290 BBR 100 JH1F JNSC  
DMS: 345,234 aAa: 432 B-Casein: A2A2 K-Casein: BB



CDCB-S Genomic Evaluation			(12/23)
Milk	+772	75%R	Net Merit (72%R) +\$672
Protein	+0.08%	+45	Cheese Merit +\$688
Fat	+0.15%	+70	CFP +115

CDCB-S/AJCA Genomic Evaluation			(12/23)
Type +1.2	78%R		+16.0JUI* GJPI* +179

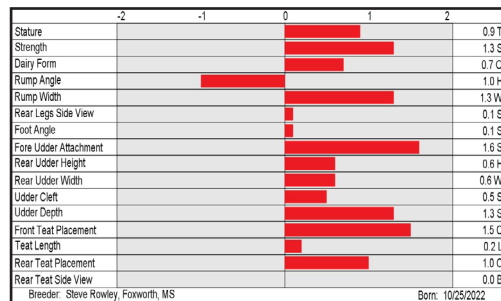
Health and Fertility			(12/23)
SCS 2.83	74%R	PL +5.2	71%R LIV +2.0 62%R
DPR -0.3	69%R	HCR +0.9	60%R CCR +0.0 69%R
DWP\$* +\$994		WT\$* +\$107	CW\$™ +\$99
M FVR 93	27%R	MAS +0.0	59%R ZMAS 105 35%R
HHP\$* +\$787			

AVAILABLE ONLY IN SEXED SEMEN

S: Four J MONSTER {6}-P-ET  
D: JX Rowleys 1749 Stoney 2182 {4}-ET (E-90%)  
MGS: JX Spring Creek Marlo STONEY {3}-ET  
MGD: JX Rowleys 1239 Leonel 1748 {4} (E-90%)  
MGGS: JX Faria Brothers LEONEL {3}-ET



JX ROWLEYS 1239 LEONEL 1748 {4} (E-90%)  
Grandam of JX MAYPOP {5}-P



SELECT SIREs



## YOUR SUCCESS Our Passion.

Phone: (614) 873-4683 ♦ [www.selectsires.com](http://www.selectsires.com)

\*Mastitis ResistantPRO, FeedPRO, RobotPRO, HHP\$, Your Success Our Passion. and the Select Sires logo are registered trademarks of Select Sires Inc., Plain City, OH. DWP\$ and WT\$ are registered trademarks of Zoetis Inc., and its affiliates and/or its licensors. Zoetis wellness values are based on January 2024 Zoetis data. "CW\$" is a trademark of Zoetis Inc., and its affiliates and/or its licensors. JPI and JUL are trademarks of the American Jersey Cattle Association. GForce and gender SELECTED are trademarks of Select Sires Inc. All gender SELECTED semen is processed using Ultraplus™ Technology. Ultraplus is a trademark of STGen LLC. Limitations and Conditions of Sale: gender SELECTED semen shall be used only for the single insemination of one female bovine during natural ovulation with the intent to produce a single offspring unless specifically approved on an individual customer basis by Sexing Technologies in writing. As a condition of purchasing gender SELECTED semen, the purchaser agrees that gender SELECTED semen will not be reverse sorted or re-sorted unless specifically permitted, in advance, on a case-by-case basis by Select Sires in writing. Select Sires intends to monitor the use of the gender SELECTED semen and vigorously enforce these restrictions on use. Please see <http://www.selectsires.com/designations/genderselected.html> for additional details.

# FEBRUARY GFORCE™ SIREs

## BURANDT

9AY148 GOOD-VUE BURANDT  
8403247937726 AH1T AH2T \*TF AMF  
B-Casein: A1A1 K-Casein: AE



### CDCB-S Genomic Evaluation

(12/23)

Milk	+884	40%R
Protein	-0.03%	+22
Fat	+0.06%	+47

Net Merit (36%R)	+\$308
Cheese Merit	+\$307
CFP	+69

### CDCB-S/ABA Genomic Evaluation

(12/23)

Type +0.4 37%R

GPTI +498

### Health and Fertility

(12/23)

SCS	2.95	34%R
DPR	-1.0	28%R

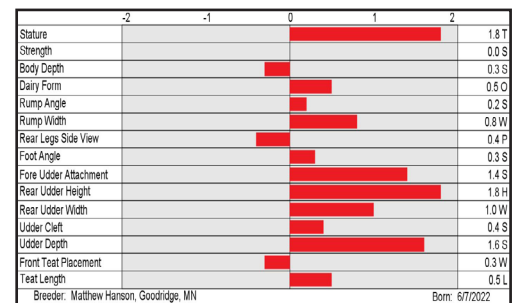
PL	-0.1	28%R	LIV	-1.4	23%R
HCR	+0.7	24%R	CCR	-1.1	27%R



GOOD-VUE MANDARIN BRENDA (EX-93-ELITE)  
Grandam of BURANDT

96.69% **AYRSHIRE**

S: Palmyra Lochinvar REYNOLDS-ET  
D: Good-Vue Armani Braylee (VG-86-ELITE)  
MGS: Duo Star Armani-ET  
MGD: Good-Vue Mandarin Brenda (EX-93-ELITE)  
MGGS: Kamouraska Mandarin (EX-90)



## PLAYTIME

9BS945 HILLTOP ACRES PLAYTIME ETV  
8403254278464 WT MT DT BH2T BH14T  
B-Casein: A1A2 K-Casein: BB



### CDCB-S Genomic Evaluation

(12/23)

Milk	+985	60%R
Protein	+0.09%	+54
Fat	+0.07%	+56

Net Merit (54%R)	+\$576
Cheese Merit	+\$597
CFP	+110

### CDCB-S/BSCBA Genomic Evaluation

(12/23)

Type +0.6 62%R

+0.88UDC

+0.3Mobility

GPGR +204

### Health and Fertility

(12/23)

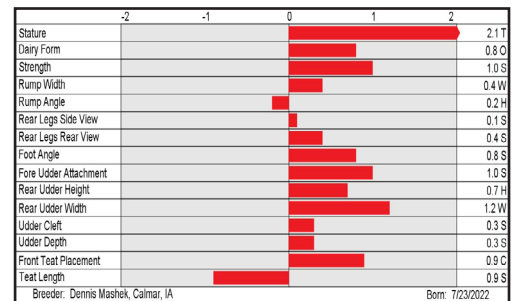
SCS	2.65	56%R
DPR	+0.6	49%R
MKS	102	51%
MAS	-0.3	23%R

PL	+2.2	51%R	LIV	+0.6	39%R
HCR	+3.0	37%R	CCR	+0.3	43%R
SCE	2.7%	39%R	DCE	3.4%	31%R



HILLTOP ACRES PRINCESS ETV "E91 E91MS"  
Dam of PLAYTIME

S: Pactole  
D: Hilltop Acres Princess ETV "E91 E91MS"  
MGS: Hilltop Acres D Kickstart ET  
MGD: Hilltop Acres Cad Paula "VG87 VG88MS" CERT  
MGGS: Shiloh Brookings Cadence ET SS QS



**YOUR SUCCESS** *Our Passion.*

Phone: (614) 873-4683 ♦ [www.selectsires.com](http://www.selectsires.com)