

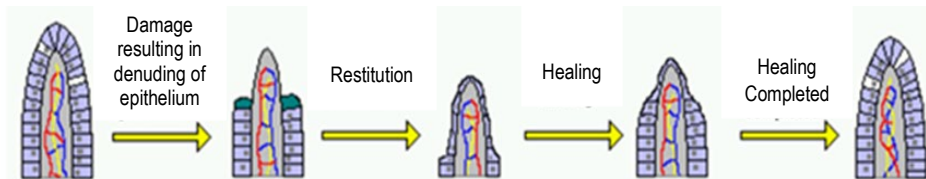
ACCEL RS

Recovery solution (stress supplement and electrolyte combination) aiding in hydration and digestive health for calves. Contains a source of live (viable) naturally occurring microorganisms.

RESEARCH-SUPPORTED FEATURES AND BENEFITS

Restore

- Plasma helps facilitate gut repair, reduce peak diarrhea volume, improve intestinal permeability and aid in regeneration of the villous surface
- Plasma is a great source of functional proteins including antibodies, growth factors, hormones, immune cells and anti-microbial compounds

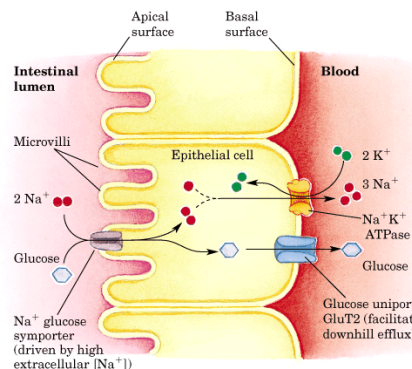


AVAILABLE PACKAGE SIZES

- 4 oz. packet (single dose)
- Case = 18 - 4 oz. packets
- 6 lb. pail*
- Case = 4 - 6 lb. pails
- 25 lb. bag*
- Pallet = 80 - 25 lb. bags
- *Enclosed scoop holds ~4 oz. of Accel RS
- Weigh powder for accurate mixing

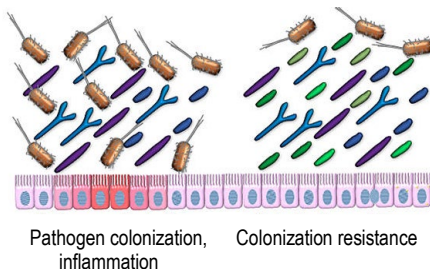
Re-energize

- The calf needs energy to mount an immune response
- Glucose provides the energy the calf needs to get up and facilitates nutrient and electrolyte absorption via sodium channels



Recolonize

- Includes Tri-Mic WD as a source of live (viable) naturally occurring microorganisms. Tri-Mic WD repopulates the digestive tract with beneficial microflora ("good bacteria") which help keep the digestive environment less tolerant to pathogen proliferation



STORAGE

Store in a cool, dry area for maximum stability. Avoid leaving open for extended periods of time.

DIRECTIONS FOR USE

Mix 4 oz. (1 packet or 1 scoop) into 2 quarts of warm water until dissolved. Feed 2 quarts of Accel RS 1-2 times daily between pasteurized waste milk (PWM) or milk replacer feedings. Continue feeding for three consecutive days. Do not eliminate PWM or milk replacer during this time.

Rehydrate

- Dehydrated calves have vulnerable mucosa
- Electrolytes are used to correct and prevent metabolic acidosis

BATCH MIXING

No. of Calves Fed	Volume of Accel RS	Volume of Water
1	1 scoop*	2 quarts
4	2 ¾ cups**	2 gallons/ 8 quarts
8	5 ½ cups**	4 gallons/ 16 quarts

*Enclosed Scoop **Standard 1 cup measuring cup

©Build A Better Heifer and Your Success Our Passion. are registered trademarks of Select Sires Inc. Buyer assumes all responsibility for use, storage and handling of this product. All claims, representations, and warranties, expressed or implied, are made only by the company responsible for manufacturing and not by Select Sires, Inc., its member cooperatives, its agents or employees. Accel RS is manufactured for Select Sires Inc., 11740 US 42N, Plain City, OH 43064.

